

PAVILION DIAMONDS AND HORIZONTAL HUNGARIAN

Thread Type	As Shown	Your Choice
Silk/metallic braid	Rainbow Gallery Silk Lame' Braid SL24 Baby Pink	
Silk/metallic braid	Rainbow Gallery Silk Lame' Braid SL80 Pink Carnation	

There are two stitches in this area, pavilion diamonds which are the longer stitches, and horizontal Hungarian, the shorter stitches between the pavilion diamonds. You may stitch with two needles at once, one threaded with one color and the other threaded with the other, or stitch all of one color then all of the other color. Your stitching will be prettier and lay nicer if you bring the needle up an empty hole and go down in a shared hole; I stitched with two needles so I could always bring the needle up in an empty hole.

There is compensation at the edges of the area, already worked out for you.

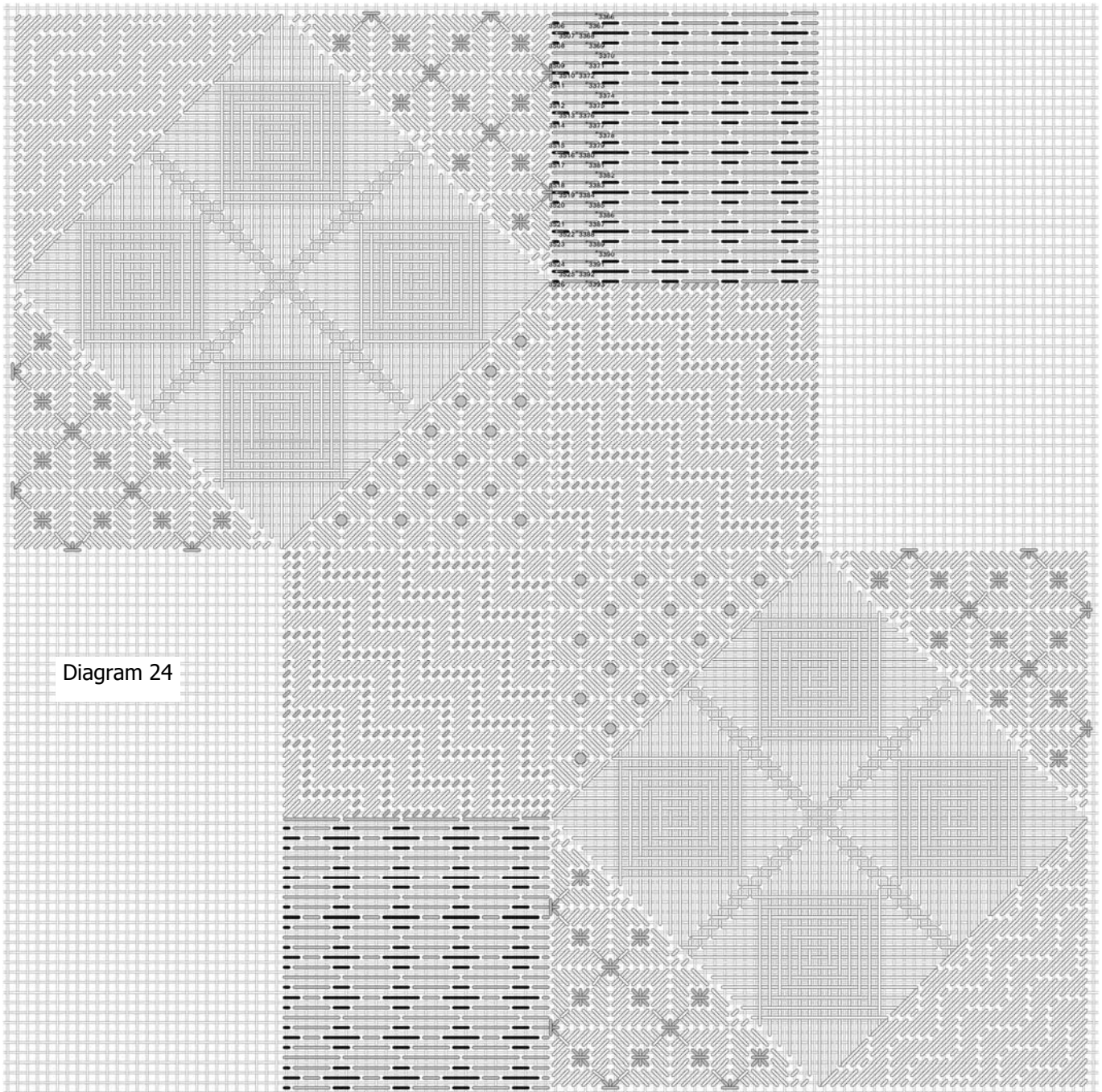
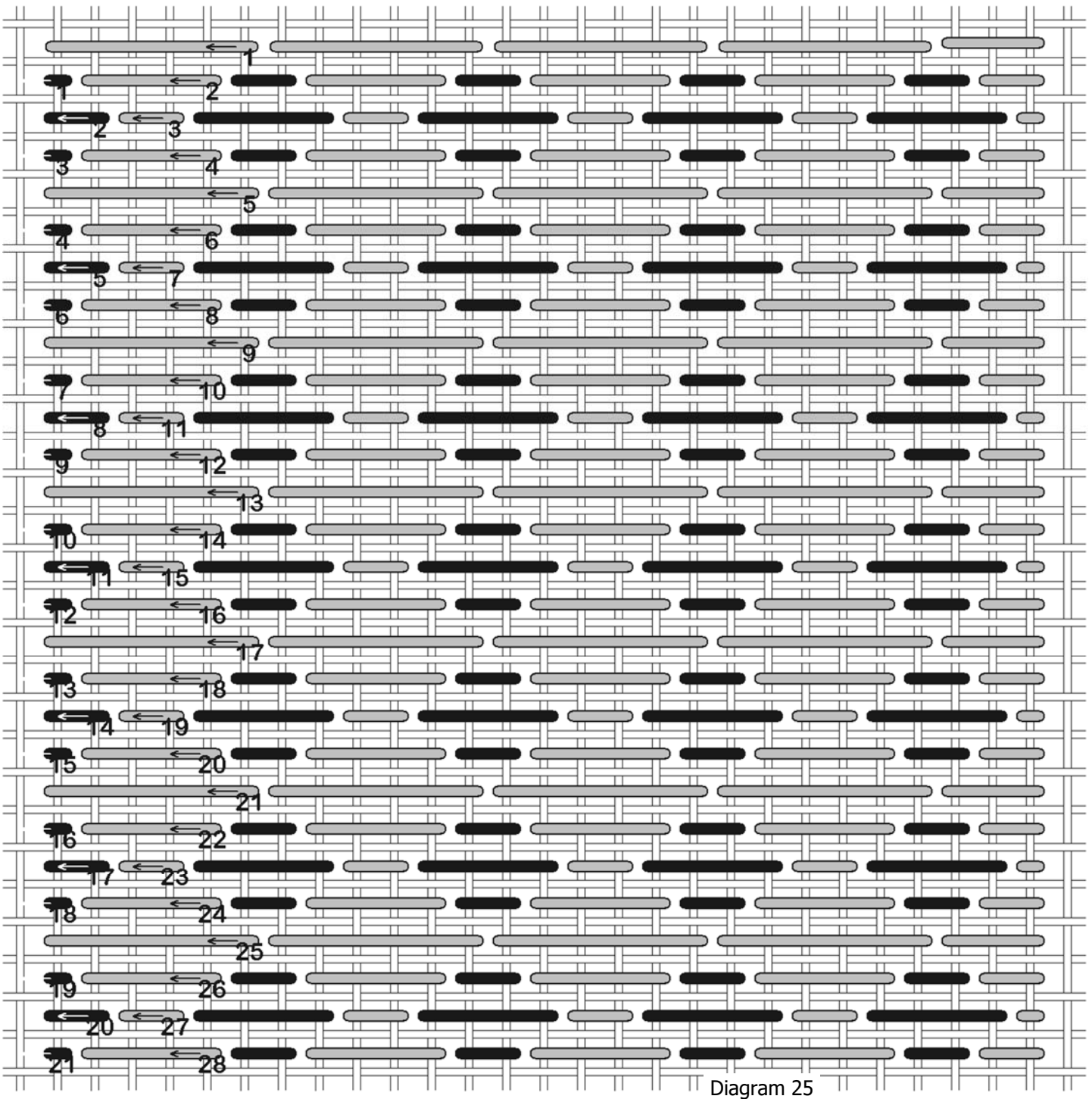


Diagram 24

Here's a close up of the area:



The other area is identical to this one.