

SPRING QUILT BLOCK

By Debbie Rowley

This design was created for American Needlepoint Guild (ANG) Holed Up Minis (HUM). I gave them the chart without instructions or thread choices, but as I stitch it I'll record what I used to stitch my model.

I'm beginning to stitch in the center of the chart. Find the approximate center, and begin stitching there. The table will show the thread I'm using, with a space for recording your own choice so you can stitch from stash and make your own color choices.

Thread Type	As Shown	Your Choice
Stranded floss	Gumnuts Stars 386 Medium Cornflower (3)	

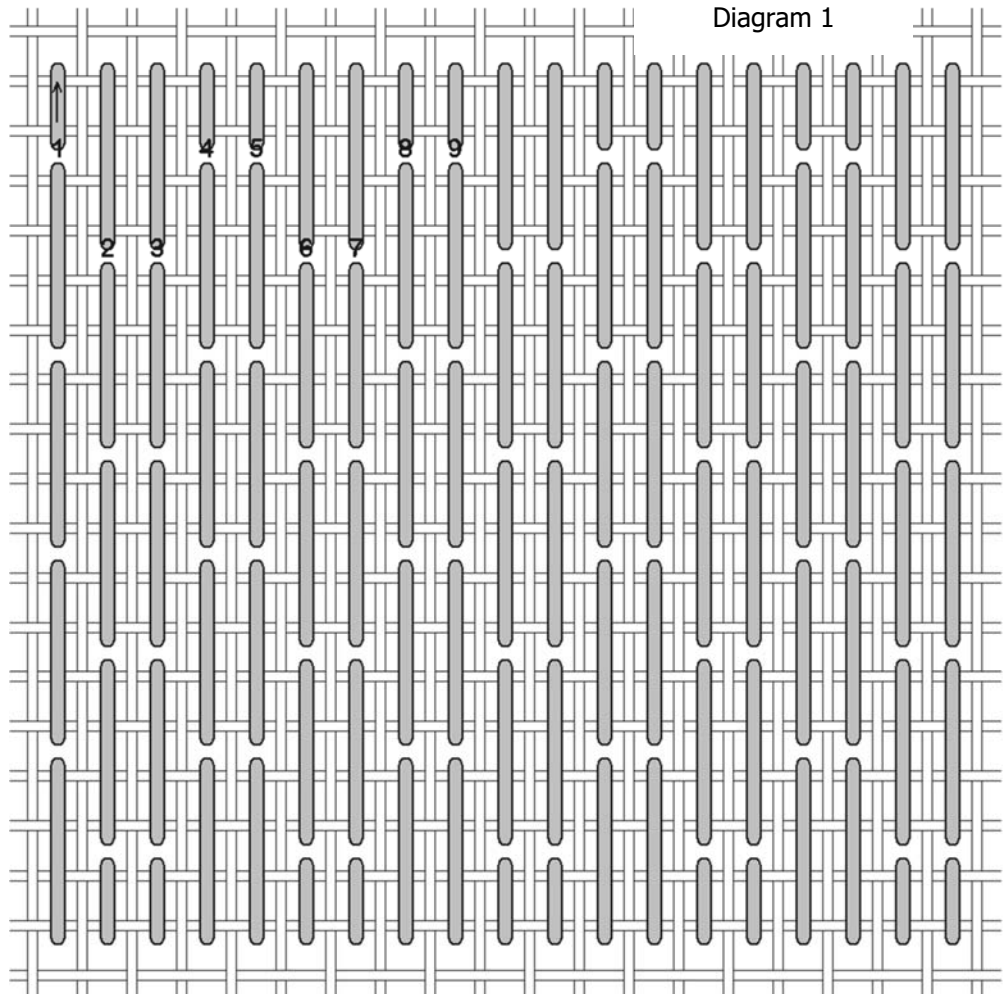
I'm using three strands for these first stitches, but you may use more or fewer strands to get the coverage you want.

DOUBLE BRICK

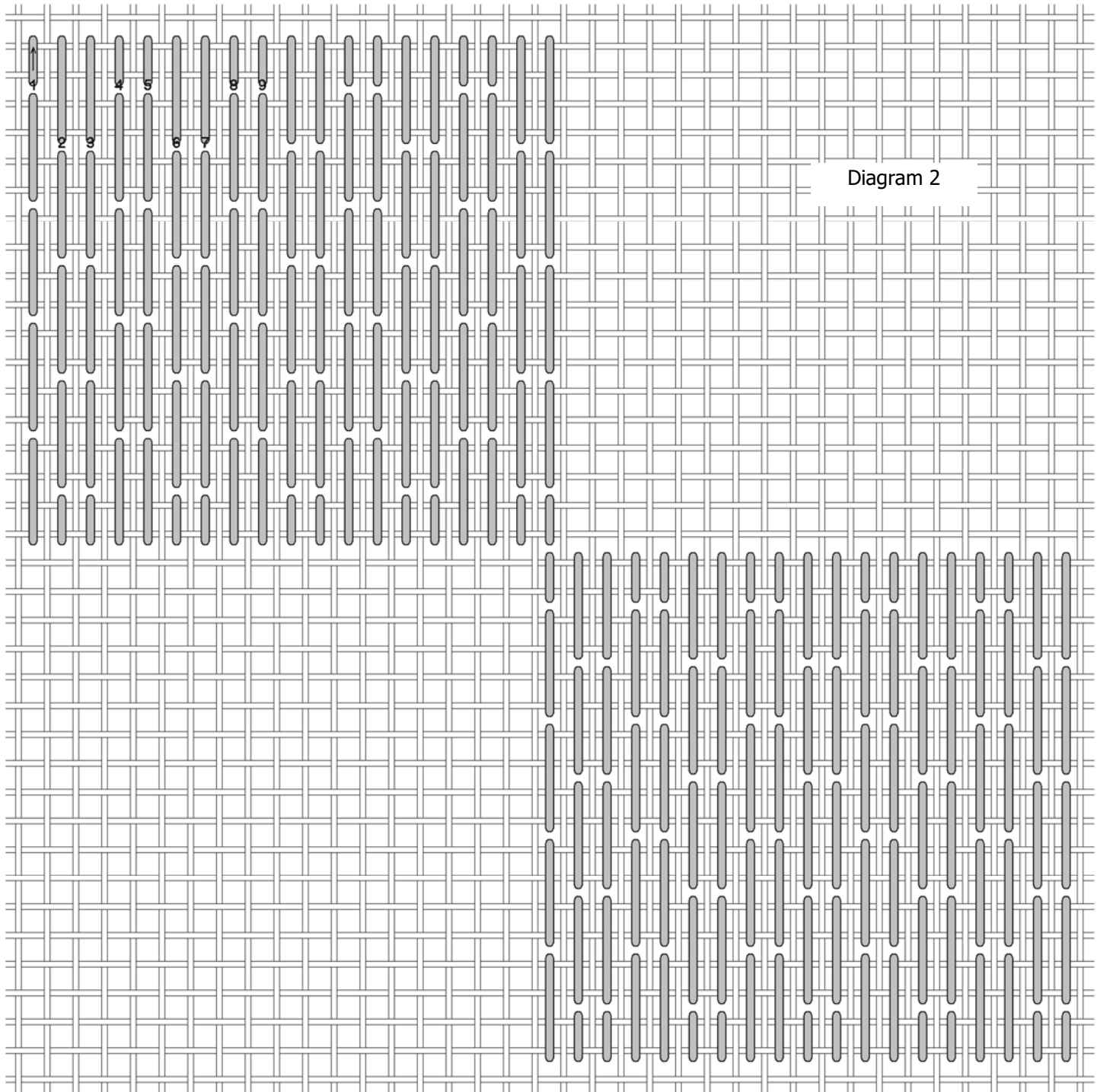
The center four blocks are filled with double brick stitch and Parisian stitch. There will be some compensation at the edges, but it's laid out for you in the diagrams.

Anchor the thread with an away knot. Bring the needle up to begin stitching 18 canvas threads up from the center, and 18 canvas threads left of the center. I'm beginning with the first color listed and will stitch both blocks with the first color, then both blocks with the second color.

Double brick is offset straight stitches in pairs. This is the upper left of center block. I stitched in horizontal rows from the left to the right, then right to left.



If you still have thread in your needle, you can continue on to the lower right block.



End off this color after stitching the lower right block.

DOUBLE PARISIAN

Thread Type	As Shown	Your Choice
Stranded floss	Gumnuts Stars 545 Medium Forest Grove (3)	

Double Parisian is a combination of two long stitches and two short stitches, offset. There will be compensation at the edges, shown in the diagrams. Like the double brick pattern, I stitched in horizontal rows left to right, then right to left.

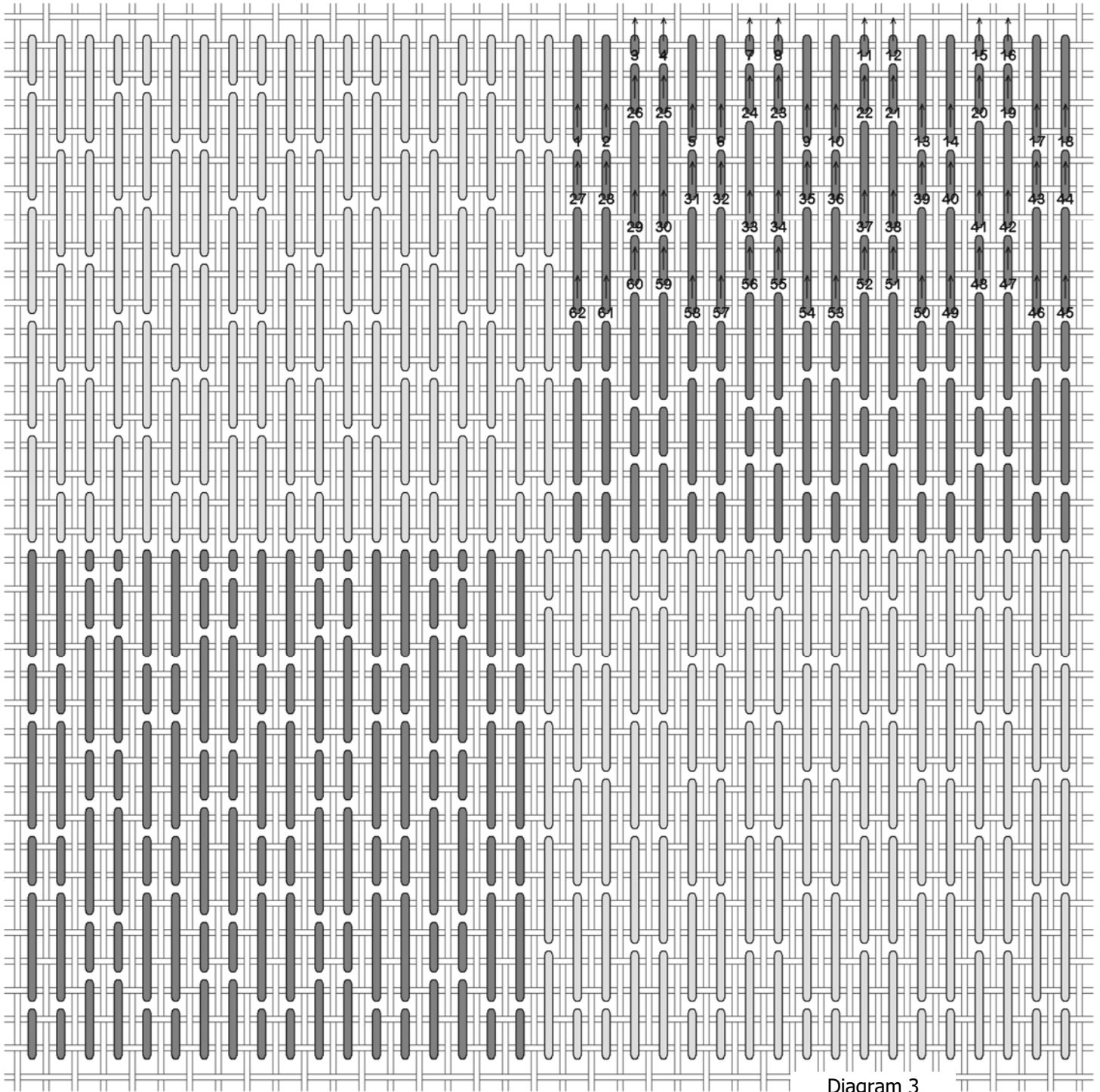


Diagram 3