

Reverse Waffle Stitch

Thread type	As Shown	Your choice
Heavy overdyed cotton	Rainbow Gallery Overture V26 Raspberry (1)	
Silk/metallic braid	Rainbow Gallery Silk Lame' Braid SL23 Dark Lavender	

Here is the first departure from the original design. I've learned a lot of stitches since I created the design, and this is one of the stitches I've learned, a reverse waffle. A reverse waffle is stitched very similarly to a regular waffle, but the first stitches in a regular waffle are the last stitches in a reverse waffle. I also stitched it with two needles, one threaded with one of the threads listed and the other with the other thread. I stitched with each in turn as I worked around the stitch.

I anchored with a pin stitch, both threads, right in the center where it would be covered by the reverse waffle stitches. It took me about 40" of each thread.

I began with the overdyed thread for the first stitches, shown in Diagram 7.

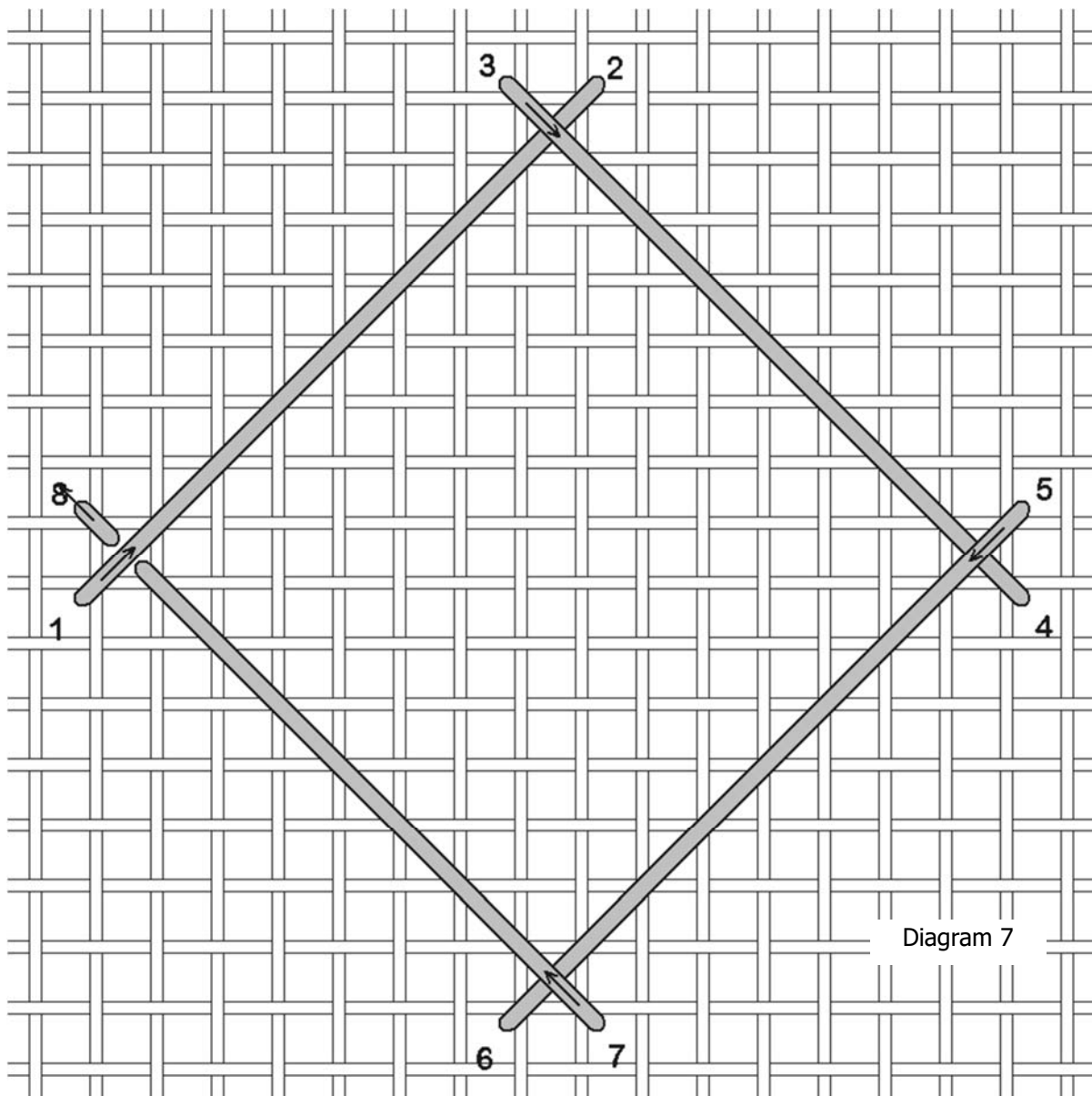
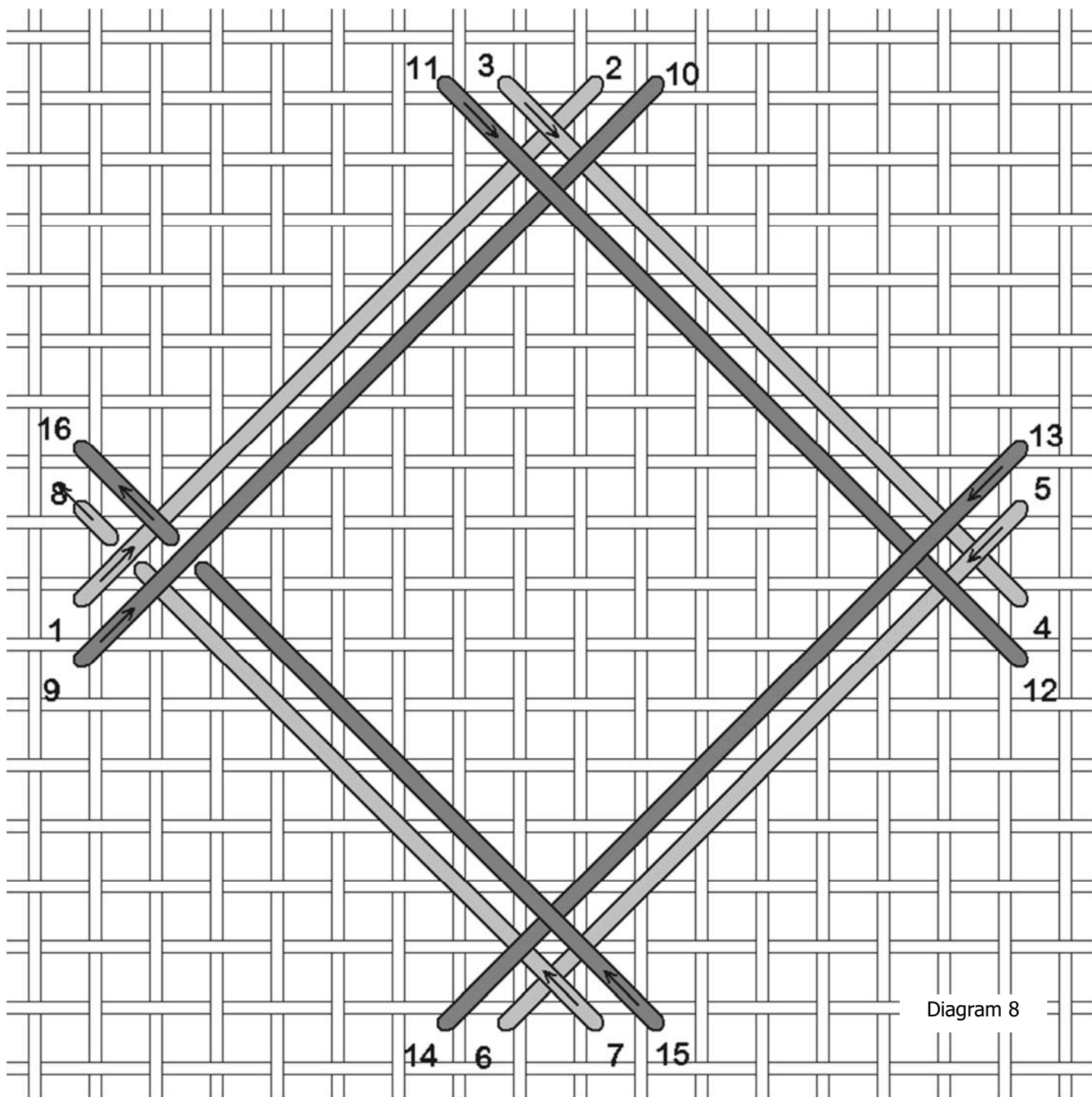


Diagram 7

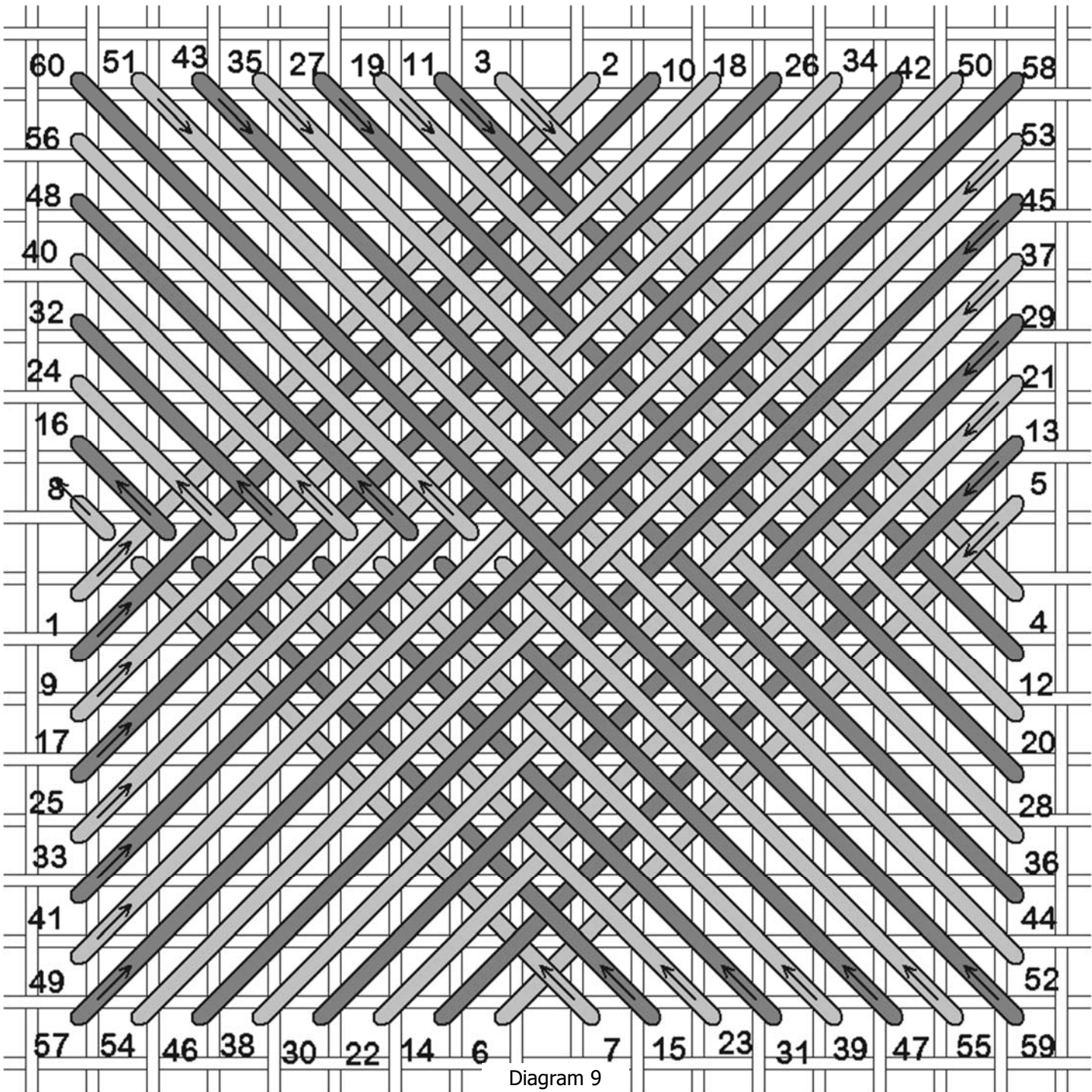
For this round and all the subsequent rounds, I ended by sliding the needle under the first stitch of the round. Now park the needle; usually I park the needle on top of the canvas by bringing the needle up where I'll need it next, here two canvas threads below position 1.

Now pick up the second needle, with the silk/metallic braid. Stitch the next round as shown in Diagram 8.



After stitching this round, park the needle on top of the canvas where you'll need it next, two canvas threads below position 9.

Continue stitching around, alternating needles, sliding the last stitch of each round under the first stitch of each round before ending.



The last two stitches should be with the silk/metallic braid (don't fret if they aren't, it just means you made two rounds in a row with the same thread). The last two stitches are the large cross stitch that would have begun the regular waffle stitch. End off by gently separating the stitches of the reverse waffle until you can see a canvas thread, and make a pin stitch over the canvas thread, stitching twice over the same canvas thread. Snip off the thread, and gently smooth the reverse waffle stitches back into place.

Place the reverse waffle stitch as shown in Diagram 10. The reverse waffle shares holes with the Rhodes stitches.

Diagram 10

