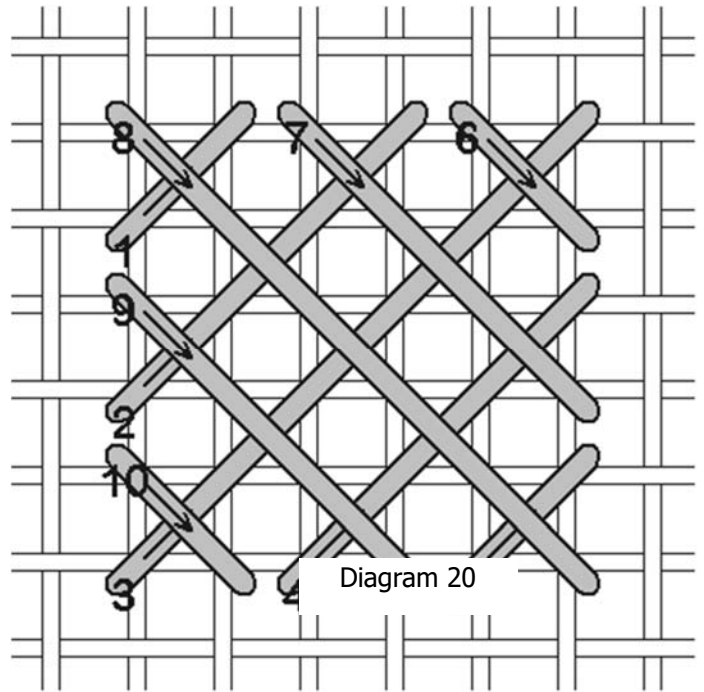


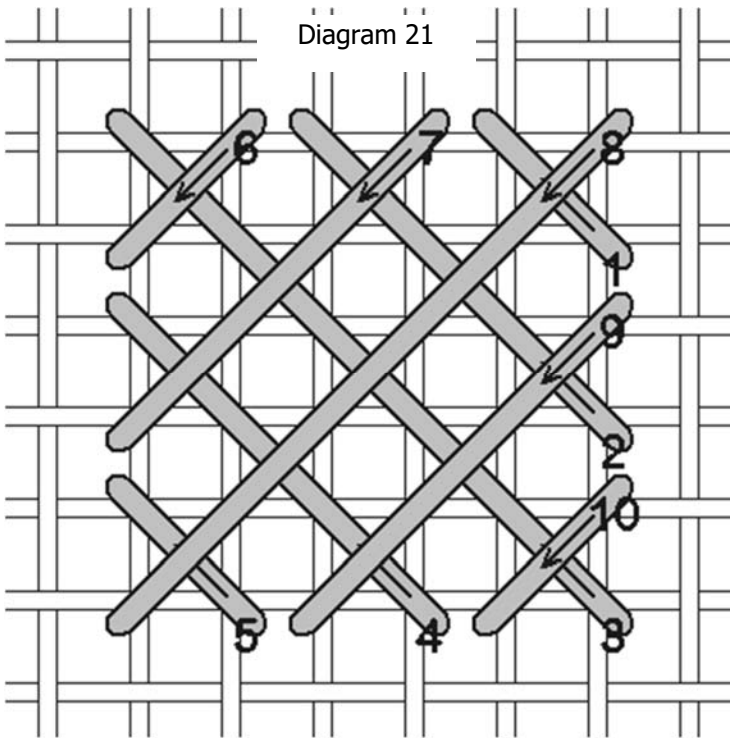
BOUND CROSS VARIATION

Thread Type	As Shown	Your Choice
Silk pearl	Gumnuts Buds 545 Medium Forest Grove(1)	

A bound cross is a series of diagonal lines all crossed one way. First stitch the bottom layer, then the top layer. This is a variation of a bound cross because it's expanded to cover six canvas threads. The basic diagram is shown in Diagram 20.

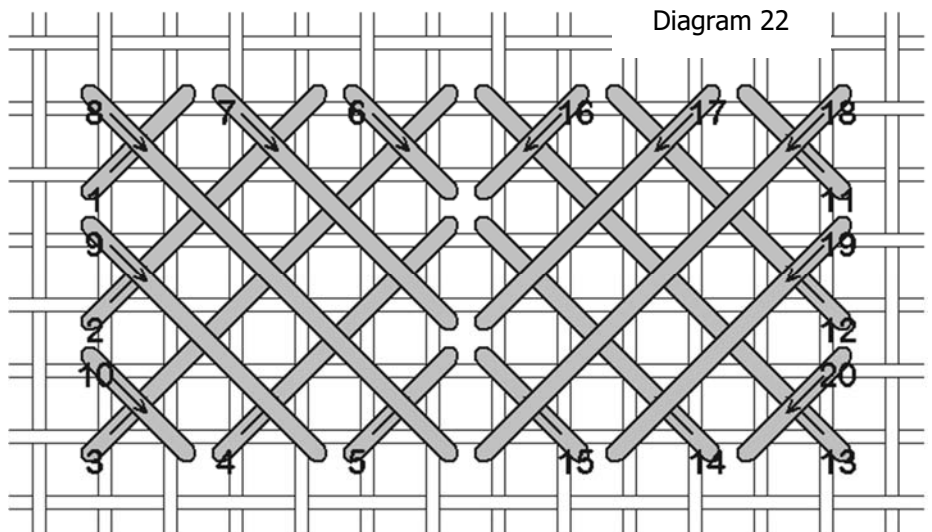


If you prefer you may stitch it as shown in Diagram 21, reversing which threads are on top.



You can even alternate the blocks as shown in Diagram 22.

I stitched all of the blocks as shown in Diagram 20. You may find a different order or stitch direction that you prefer, just try to be consistent.



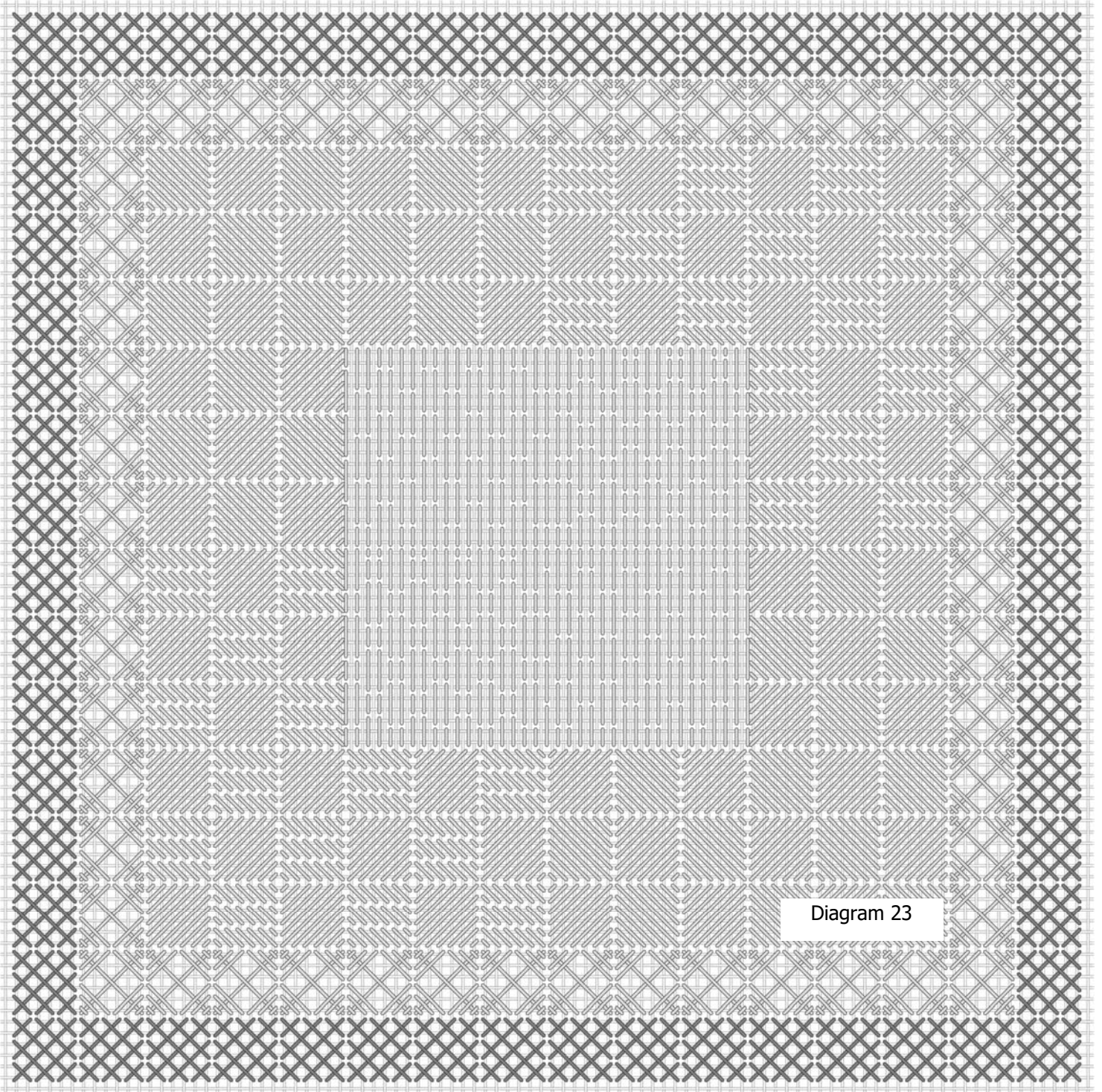


Diagram 23

The completed bound cross variation border.