

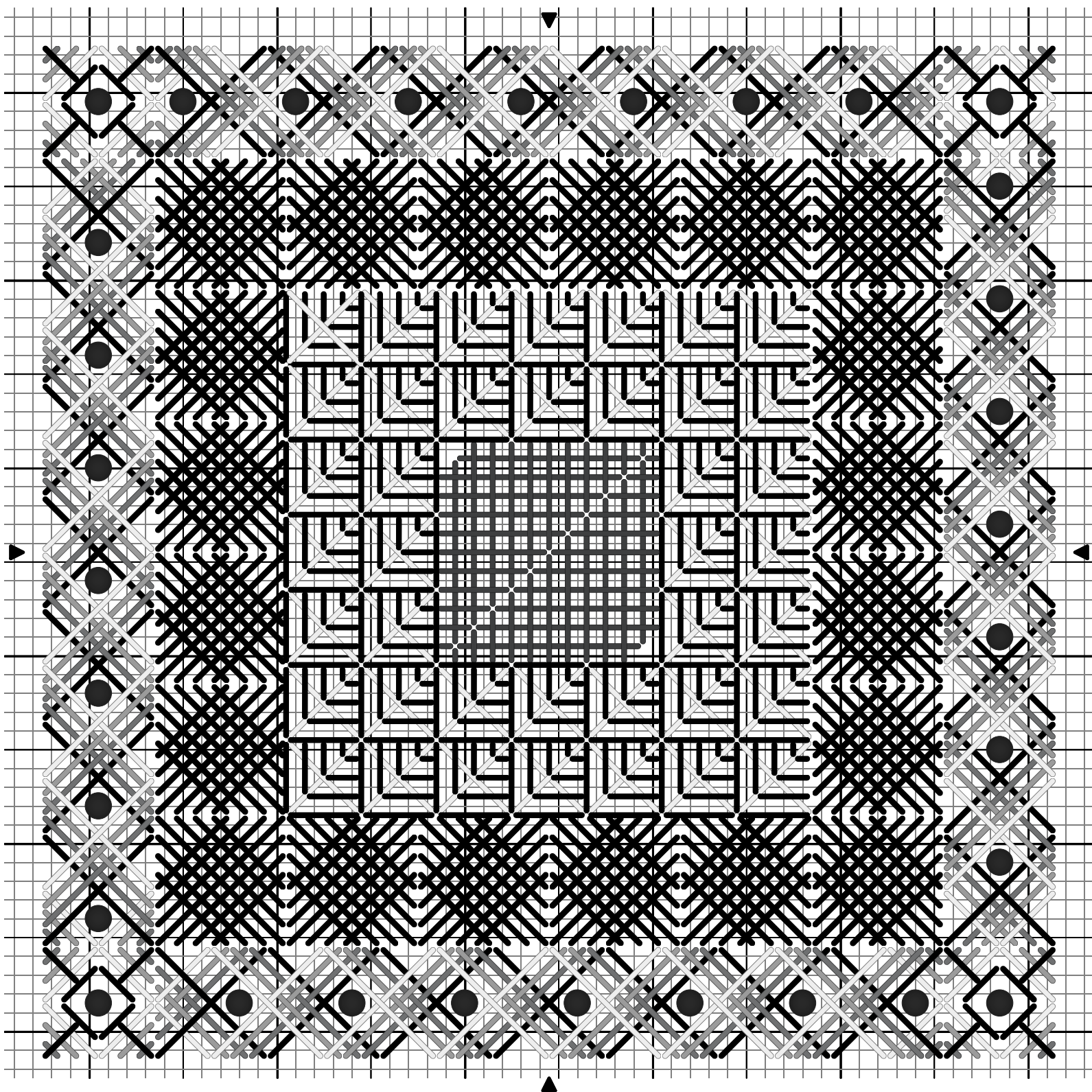
DebBee's Designs



FROSTED WINTER ORNAMENT 2020

©2020 Debbie Rowley for DebBee's Designs. All rights reserved.
Design size 54 x 54 stitches, approximately 3" square on 18 ct. canvas

Frosted Winter Ornament 2020



Design By: Debbie Rowley

Copyright © 2020 Debbie Rowley

FROSTED WINTER ORNAMENT 2020

By Debbie Rowley

This free ornament chart is a gift for subscribers to my email list. Please do not copy or share. I'll be happy to provide a copy to new subscribers, so if you have a friend who wants the chart please direct them to my website, www.DebBeesDesigns.com, so they can sign up to receive a free chart.

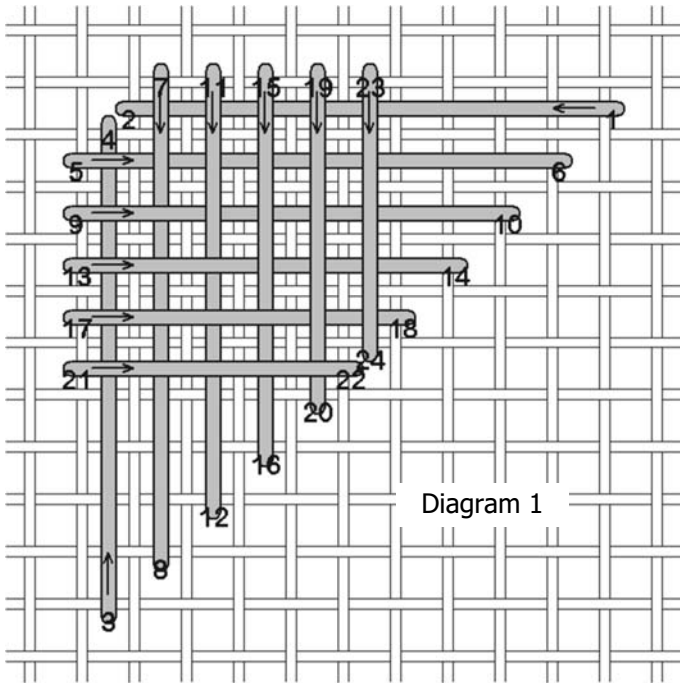
I used several different threads when I stitched, and the instructions will reflect that, but I encourage you to change the colors and/or threads to suit your tastes and décor.

I stitched my ornament on 18 ct. deluxe mono Victorian Green, 10" x 10". The design size is about 3" square.

Sprat's Heads

Thread Type	As Shown	Your Choice
Rayon/metallic braid	Rainbow Gallery Entice E211 Twinkle Blue	

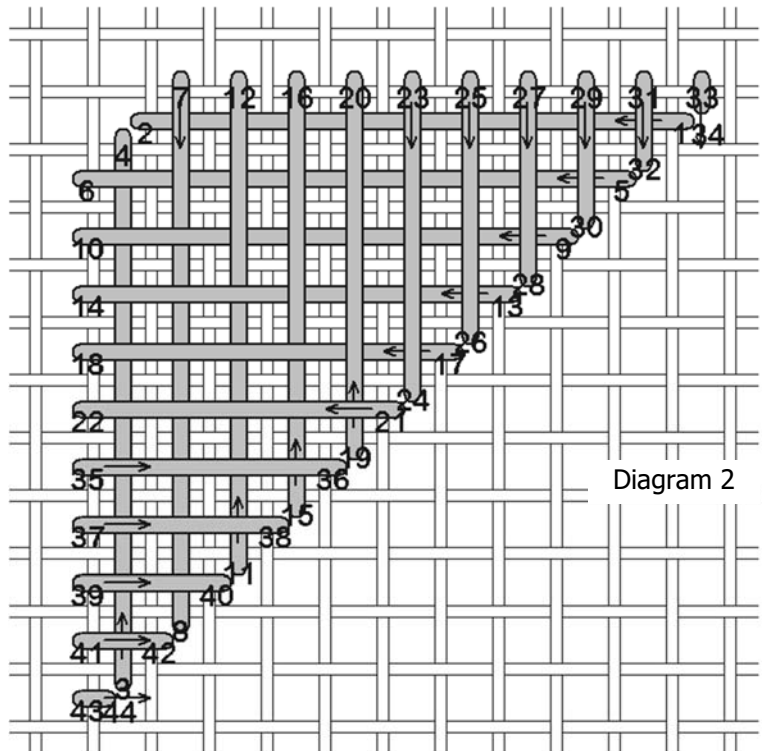
The center of the ornament is a sprat's head variation. I anchored with a pin stitch close to the center, then stitched the first part. Find the approximate center of the canvas. I always allow about 3" on each side of the design, so there's plenty of canvas for finishing, and it won't be a big deal if you're slightly off the center when you start stitching. It will take about 30" to stitch all of this motif.

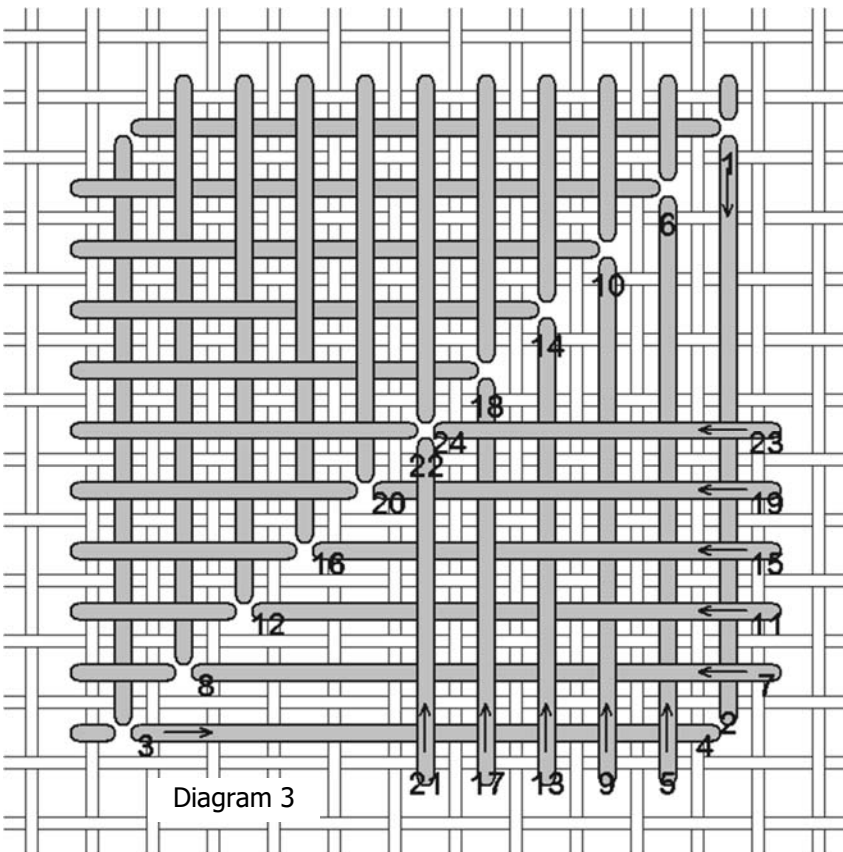


Begin as shown in Diagram 1. Do not end off the thread after stitching as shown, but continue on to the next step.

The next step is to stitch additional lines across the edges of the sprat's head, shown in Diagram 2.

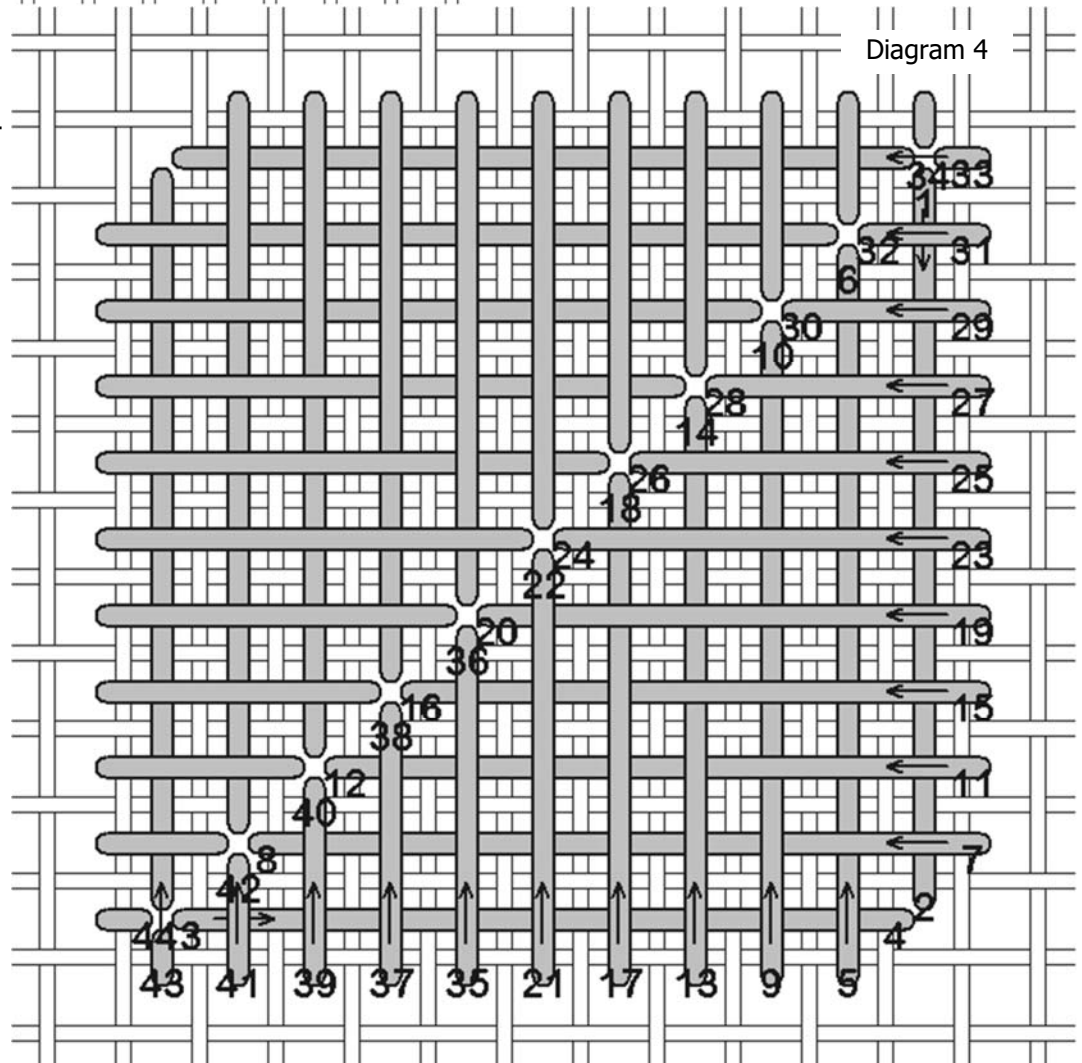
Do not end off the thread, but continue on to the next step.





Continuing with the same thread, stitch a mirror of the sprat's head, shown in Diagram 3. Don't end off the thread yet, but continue on to the next step.

Finish the center as shown in Diagram 4. Now you can end off the thread. I ended by weaving into the back of the stitches on the wrong side of the canvas.

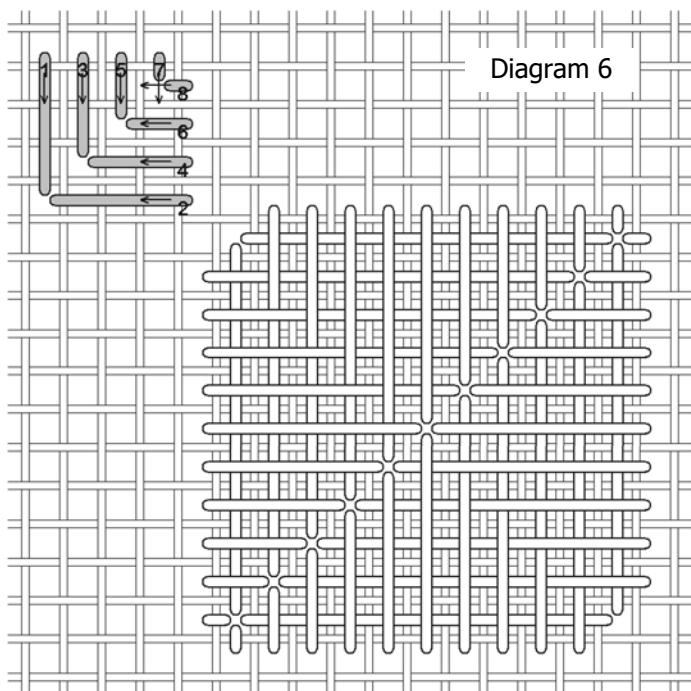


Triangle Stitch Variation

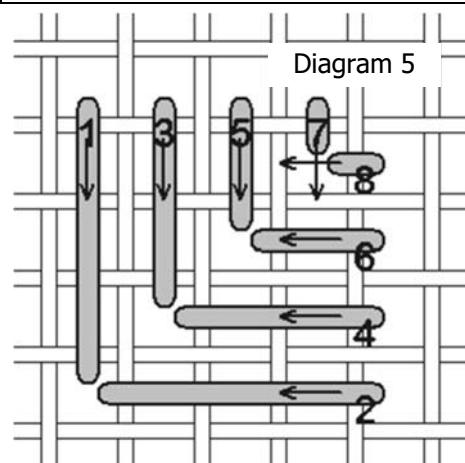
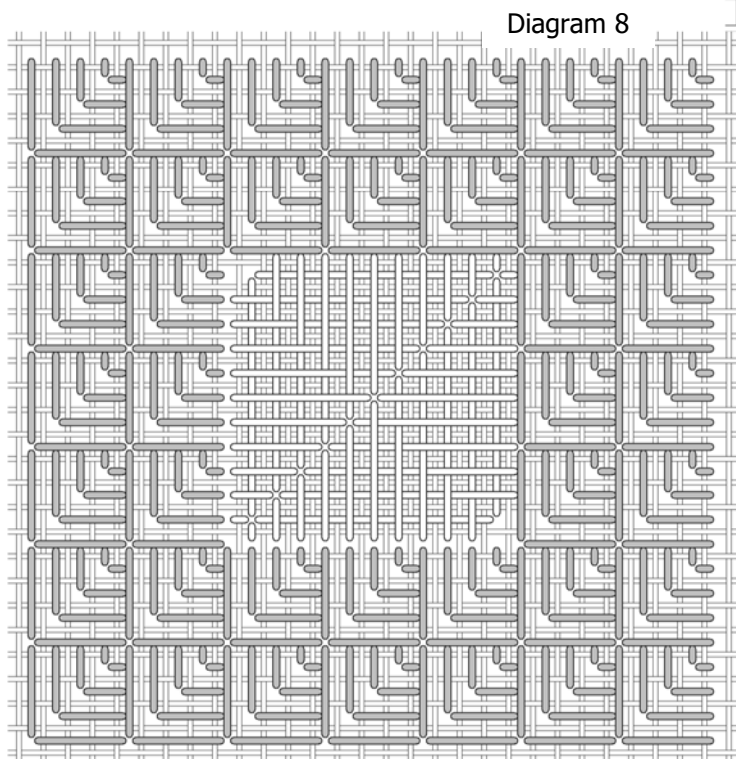
Thread Type	As Shown	Your Choice
Overdyed silk floss	Dinky Dyes Silk 08 Mint Ice (3)	

I used 3 strands of silk to stitch the next part, triangle stitch variation, around the center sprat's heads. I anchored the thread by weaving into the back of the sprat's head stitches. The stitch is shown in Diagram 5.

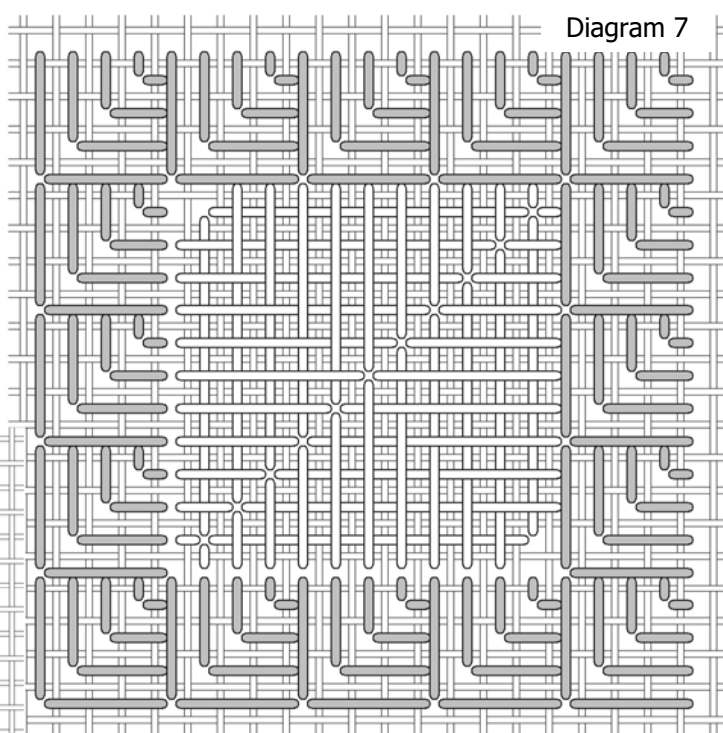
Begin where shown in Diagram 6.



If you still have thread in your needle don't end off but stitch the second row of triangle stitch variation around the center, shown in Diagram 8.



Stitch the first row around the entire center, shown in Diagram 7.

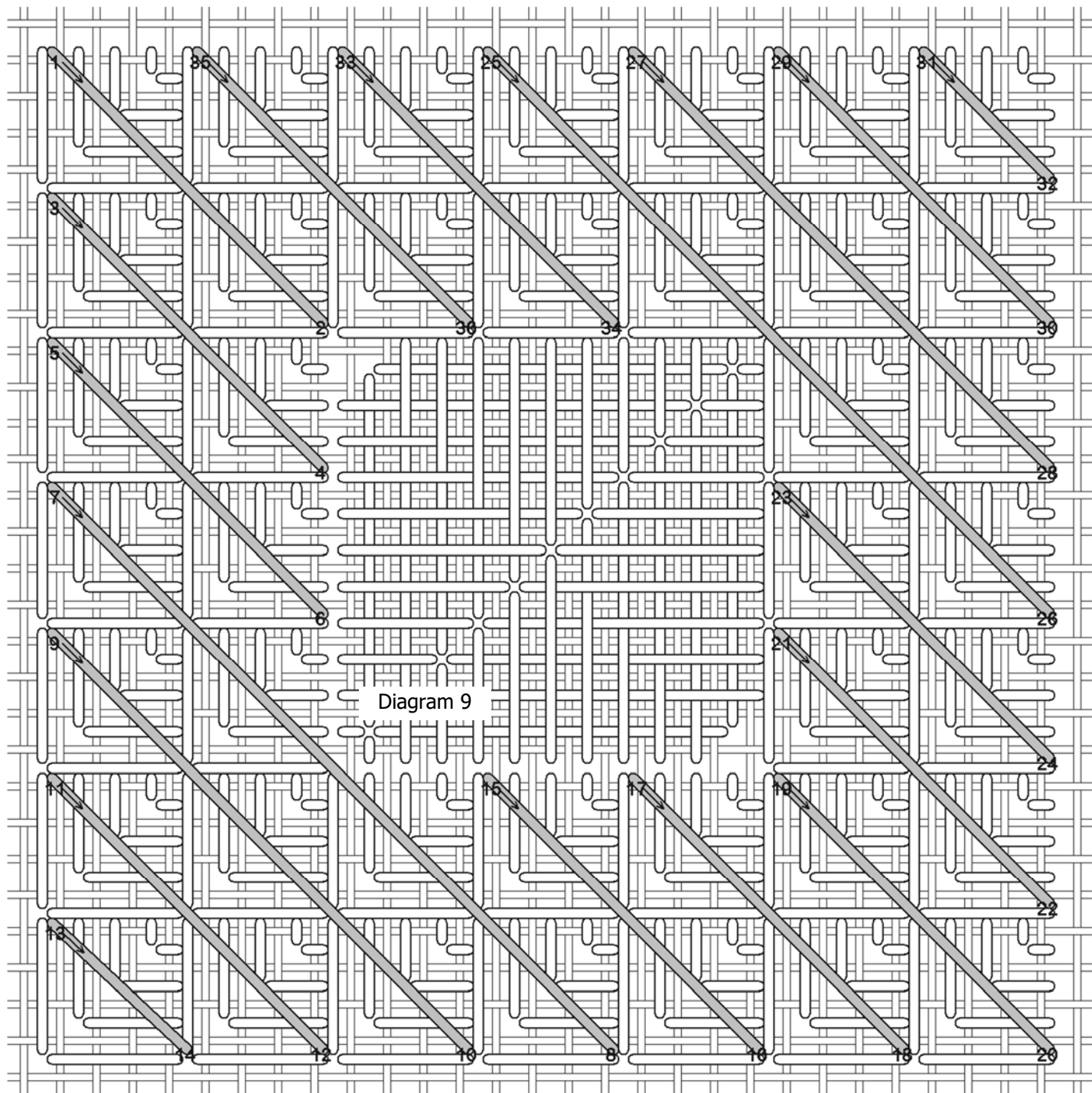


Trellis stitches

Thread Type	As Shown	Your Choice
Fine metallic braid	Kreinik #8 9194 Star Green	

Stitch long lines of fine metallic braid over the triangle stitch variations. I anchored the thread in the backs of the triangle stitches.

Stitch first as shown in Diagram 9. These are just long lines, so stitch as shown.



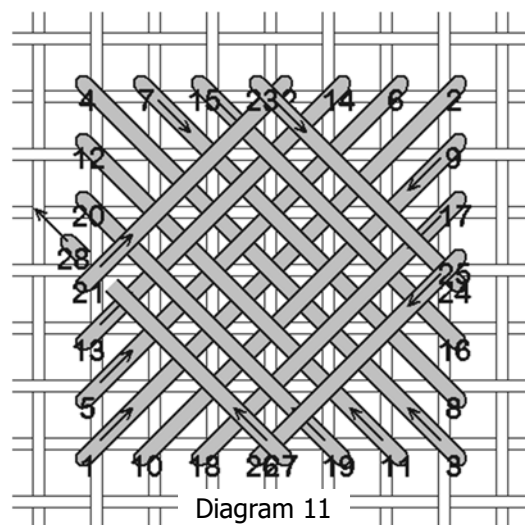
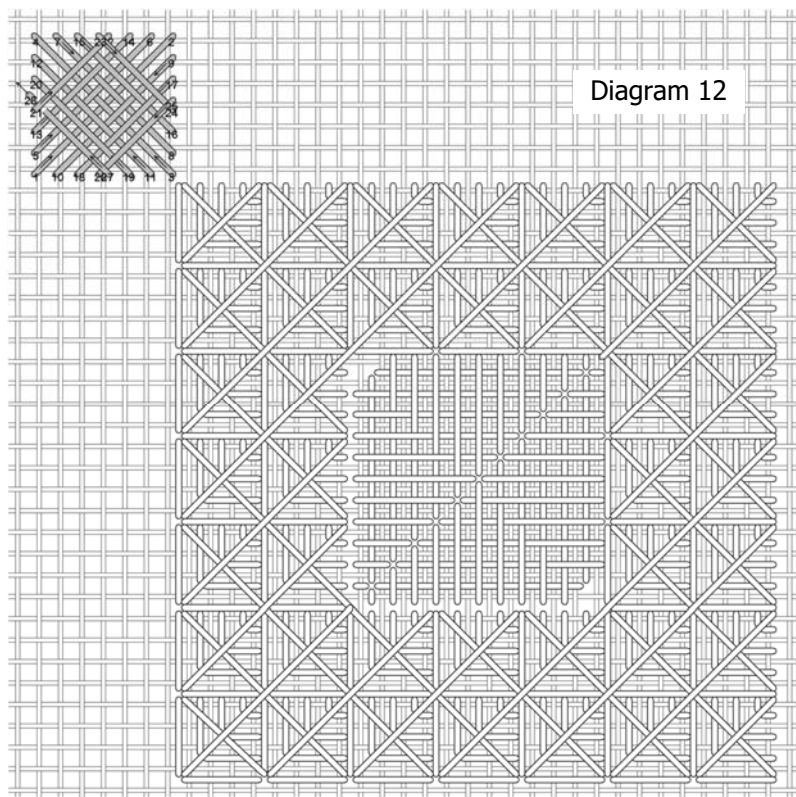
If you still have thread in the needle, continue on to the next step.

Diagram 10

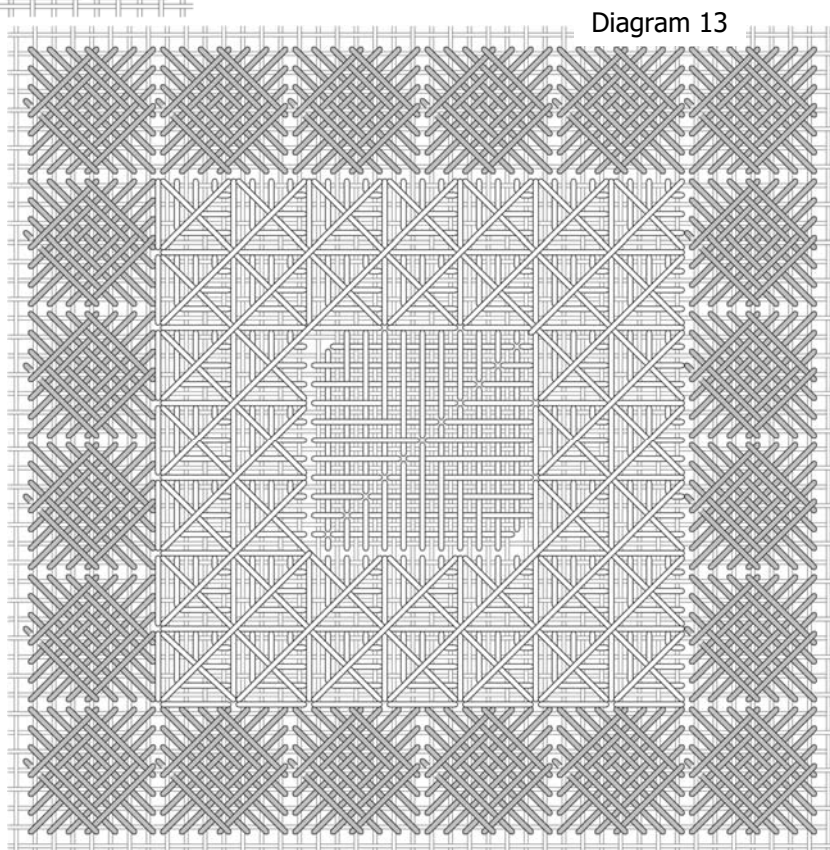
Waffle Stitches

Thread Type	As Shown	Your Choice
Overdyed cotton floss	Threadworx 01018 Baby Blue Eyes (2)	

I used 2 strands of overdyed floss to stitch the waffle stitches. The waffle stitch is shown in Diagram 11, with placement in Diagram 12. Notice that the last stitch, stitch 27, slides under stitch 21 before ending.



All of the waffle stitches are shown in Diagram 13.



Layered Cross Stitch

Thread Type	As Shown	Your Choice
Overdyed silk floss	Dinky Dyes 08 Mint Ice (2)	

The layered cross stitch will be shown one step at a time. Begin as shown in Diagram 14. The corners are different, so make a note of that as you stitch.

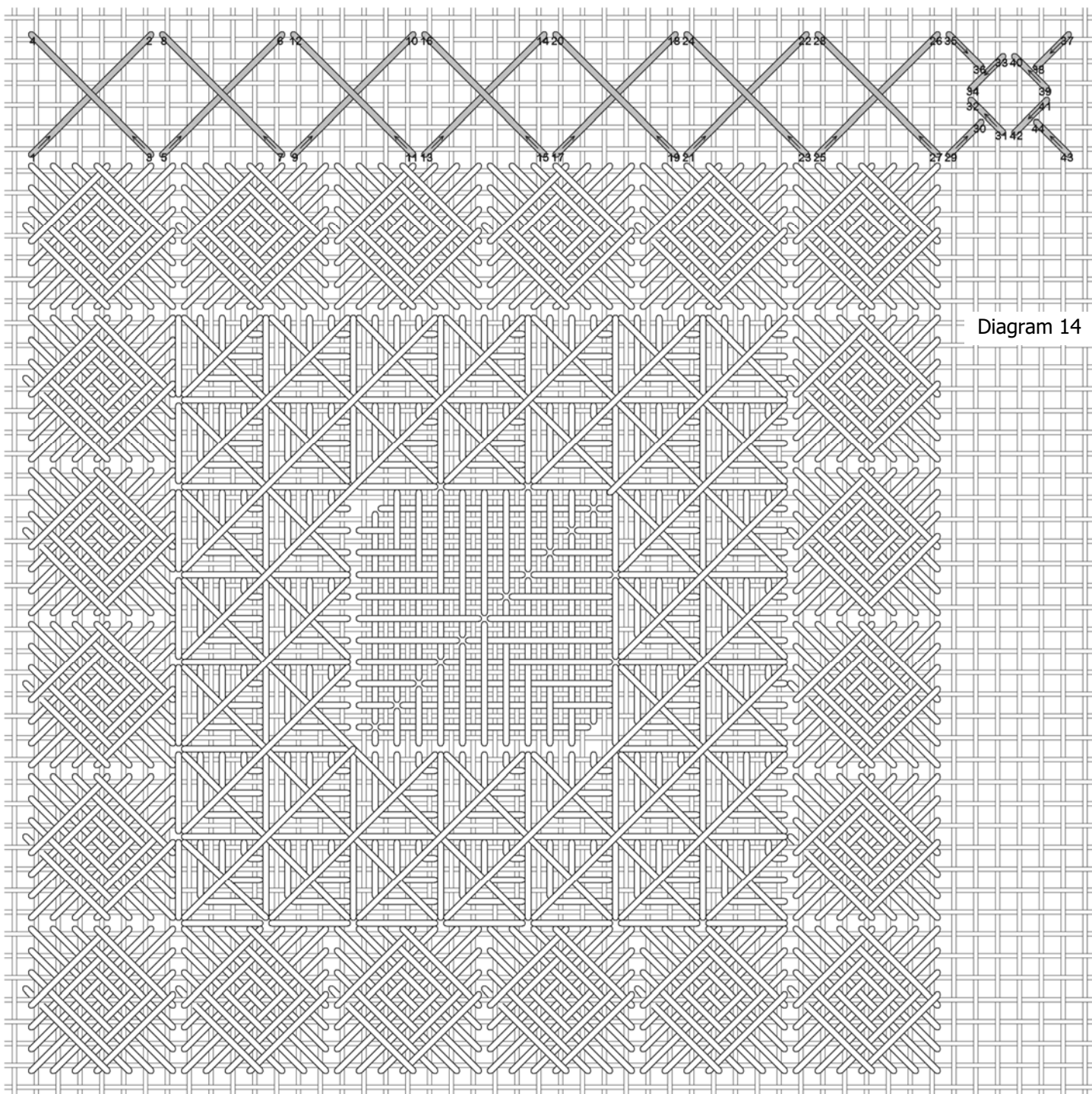
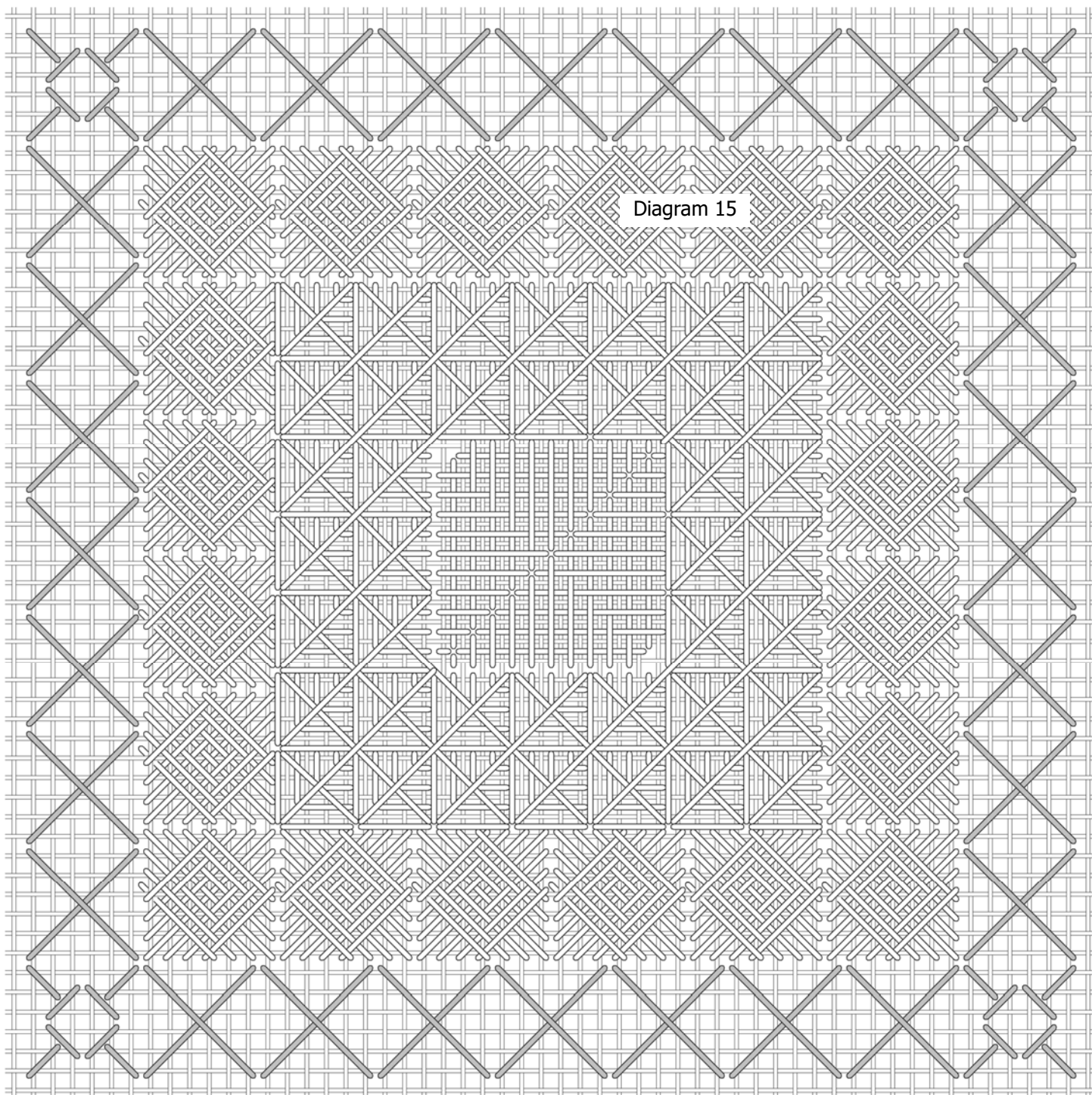


Diagram 14

If you still have thread in your needle you can continue on around.

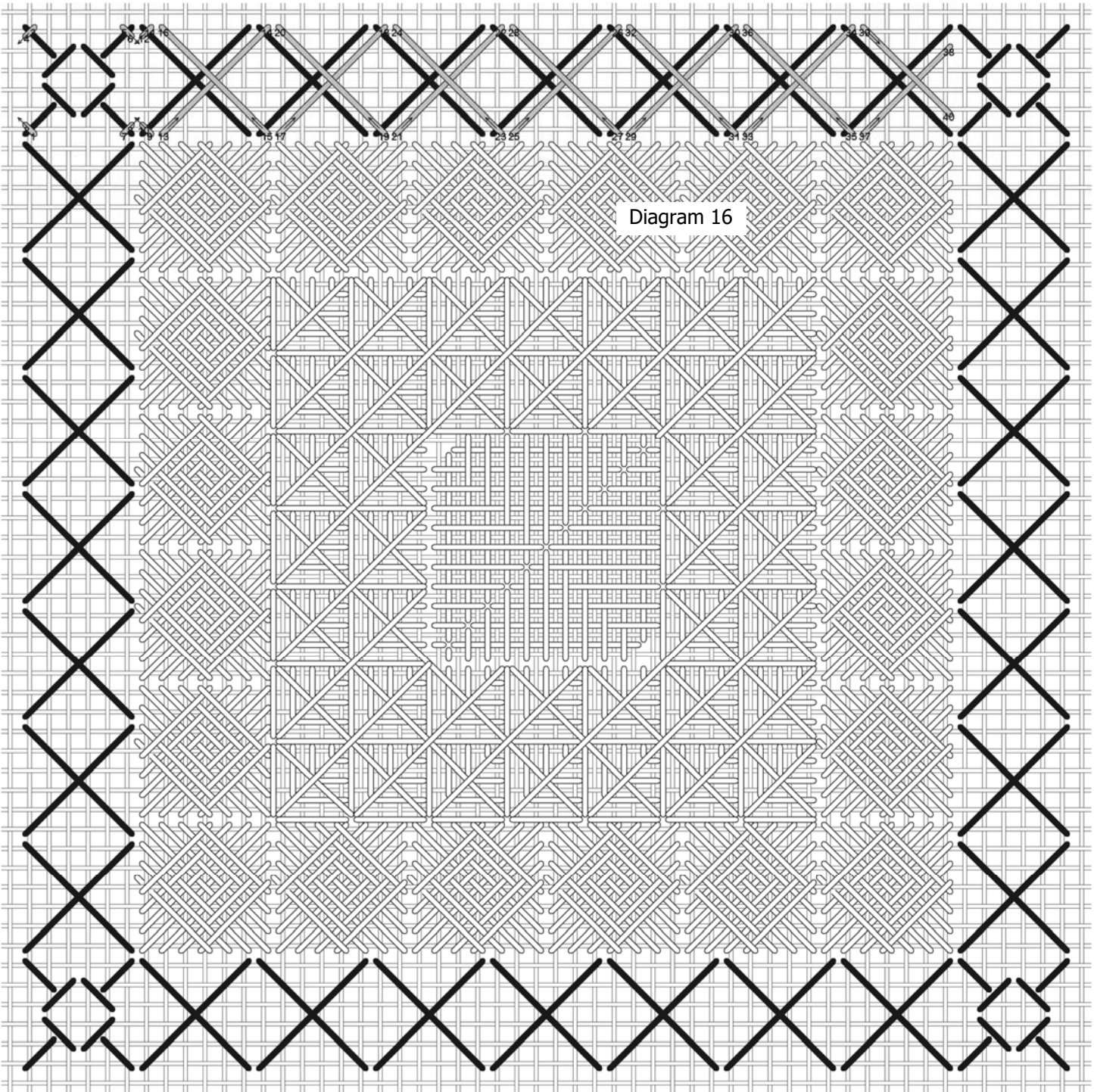
You may find it easier to stitch the remaining rows by turning the canvas, so you are always stitching the same orientation.



Stitch all of the first layer with the same thread.

Thread Type	As Shown	Your Choice
Fine metallic braid	Kreinik #8 9194 Star Green	

Stitch the second layer with the fine metallic braid. Begin as shown in Diagram 16.



The previous layer is shown in black for reference. As before, you can turn the canvas as you stitch so you are always stitching the same orientation as you stitch around.

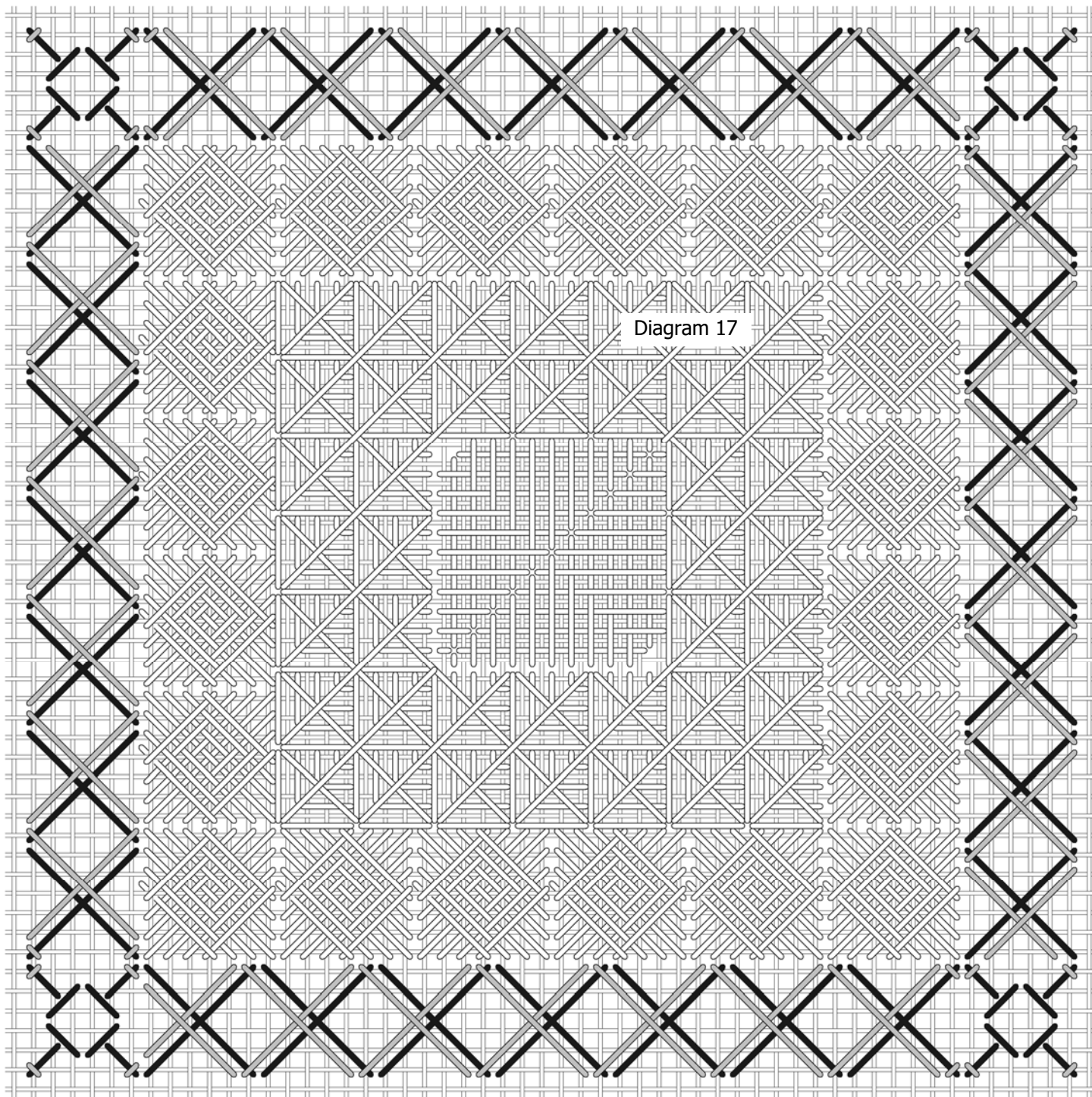
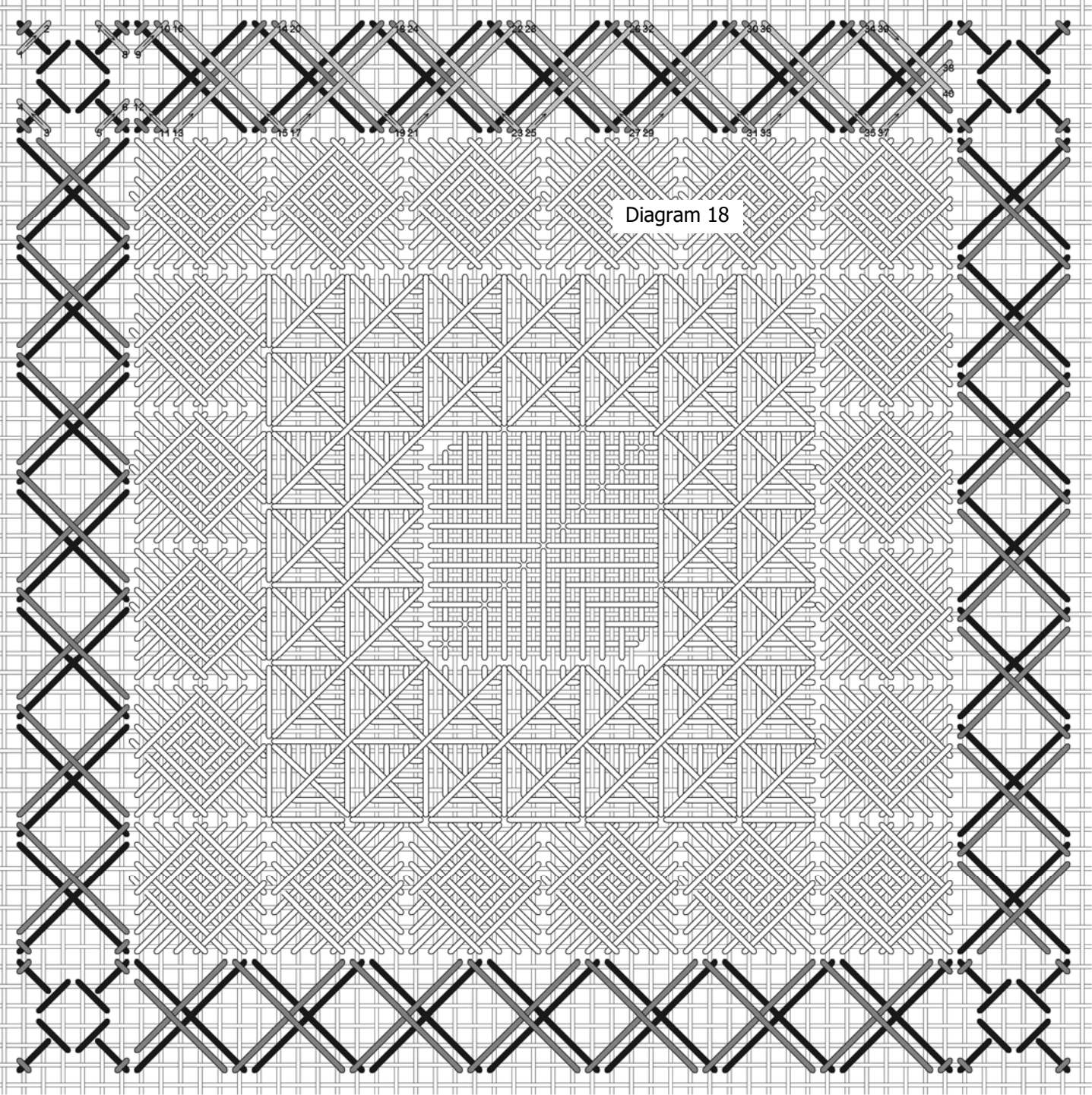


Diagram 17

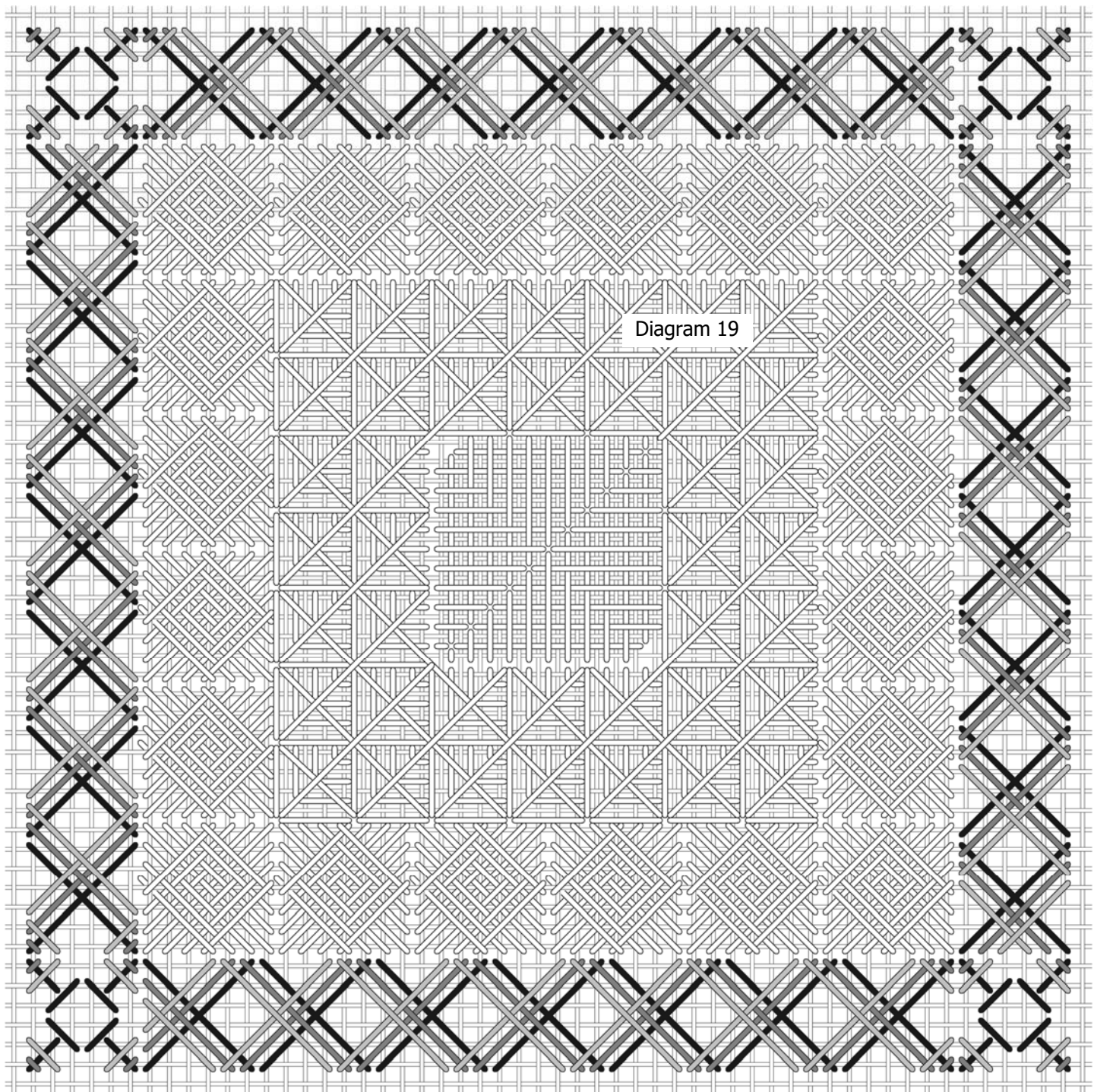
The second layer has compensating stitches at the edges, so the pattern looks complete when finished.

Thread Type	As Shown	Your Choice
Overdyed cotton floss	Threadworx 01018 Baby Blue Eyes (2)	

Use 2 strands of floss to stitch the next layer.



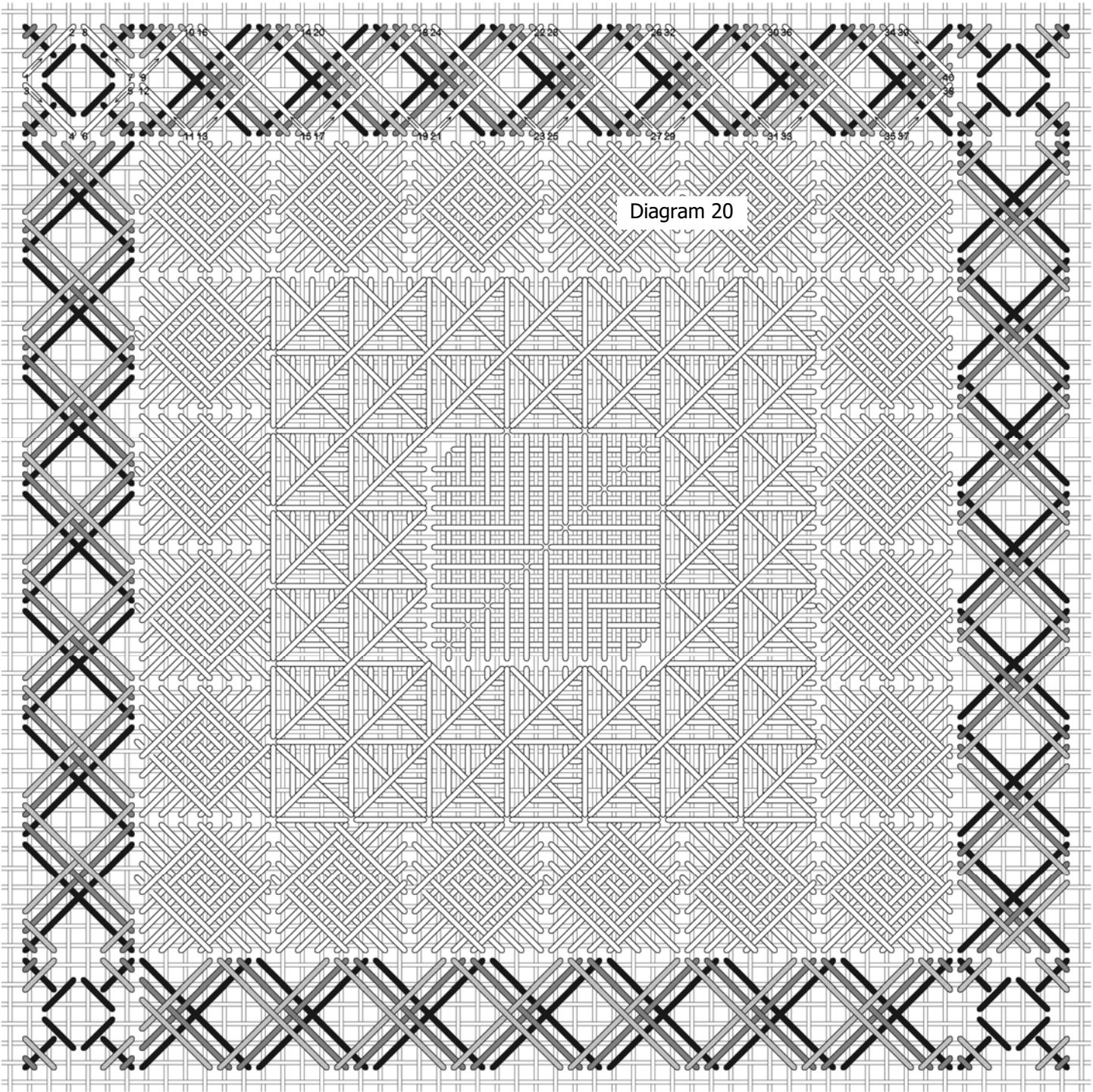
Turn the canvas as you stitch so you are stitching the same orientation.



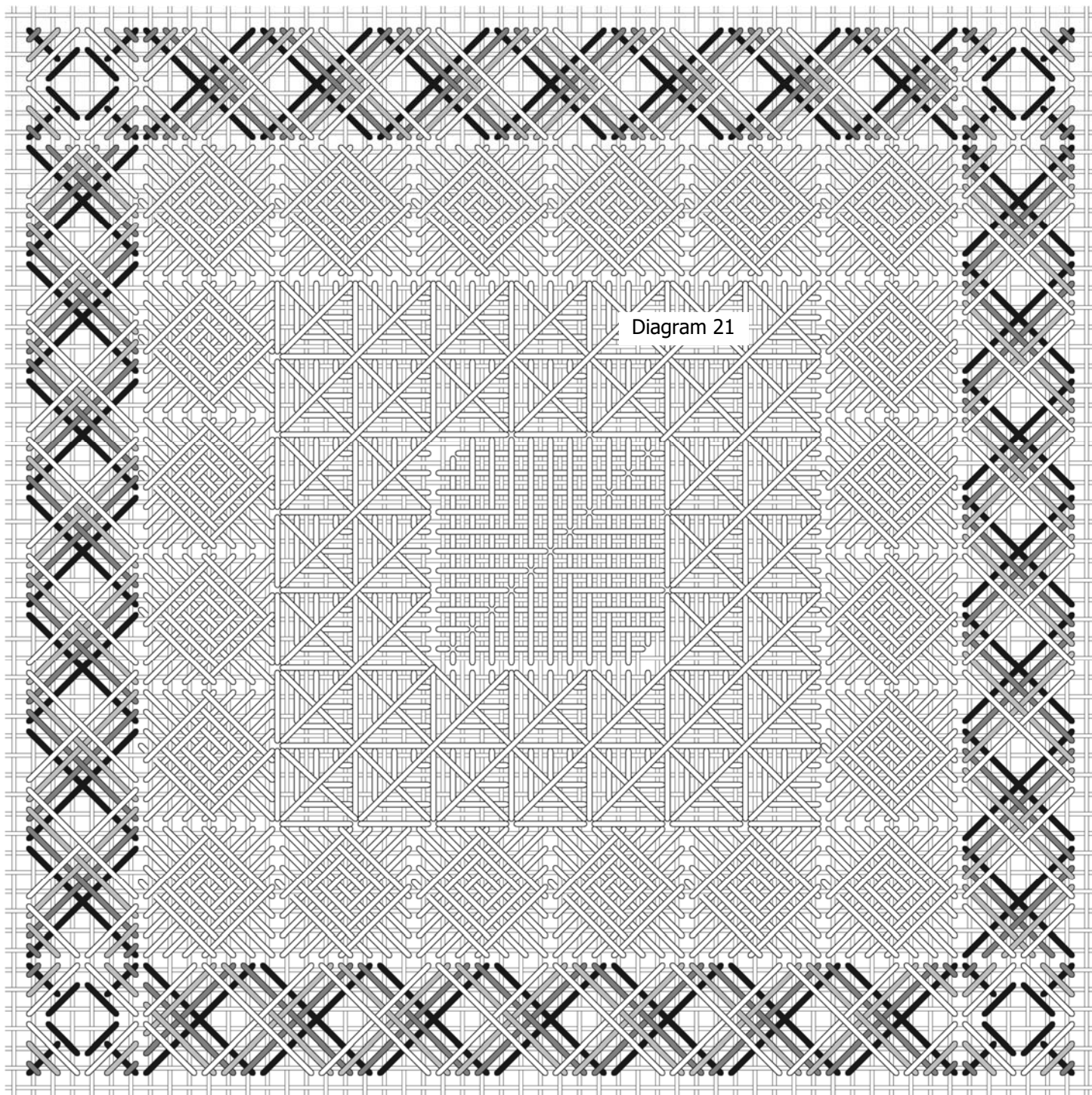
The first layer is shown in black, the next layer is shown in dark gray, and the working layer is shown in light gray.

Thread Type	As Shown	Your Choice
Overdyed fine metallic braid	Threadworx #8 71018 Baby Blue Eyes	

Use the overdyed fine metallic braid to stitch the last layer.



This layer is shown in white.



This completes the stitching. Now for the final step!

Beads

Thread Type	As Shown	Your Choice
Glass seed beads	Mill Hill Glass Seed Beads 02017 Crystal Aqua	
Overdyed cotton floss	Threadworx 01018 Baby Blue Eyes (1)	

Use a single strand of floss to attached the beads, going through each bead twice. I applied the beads using a horizontal stitch, not a cross stitch, to make sure the beads sit on the canvas properly. At the corners stitch over 2 canvas threads, and inside the layered cross stitch stitch over 1 canvas thread.

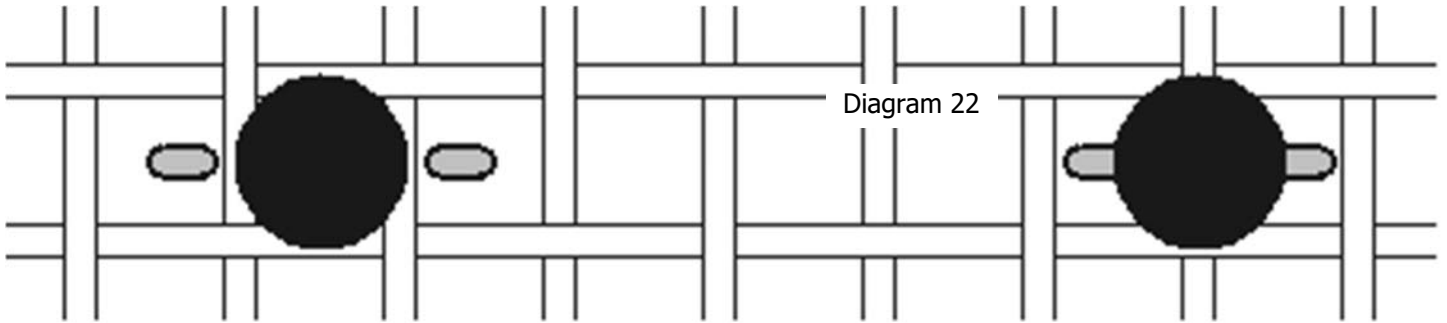


Diagram 22

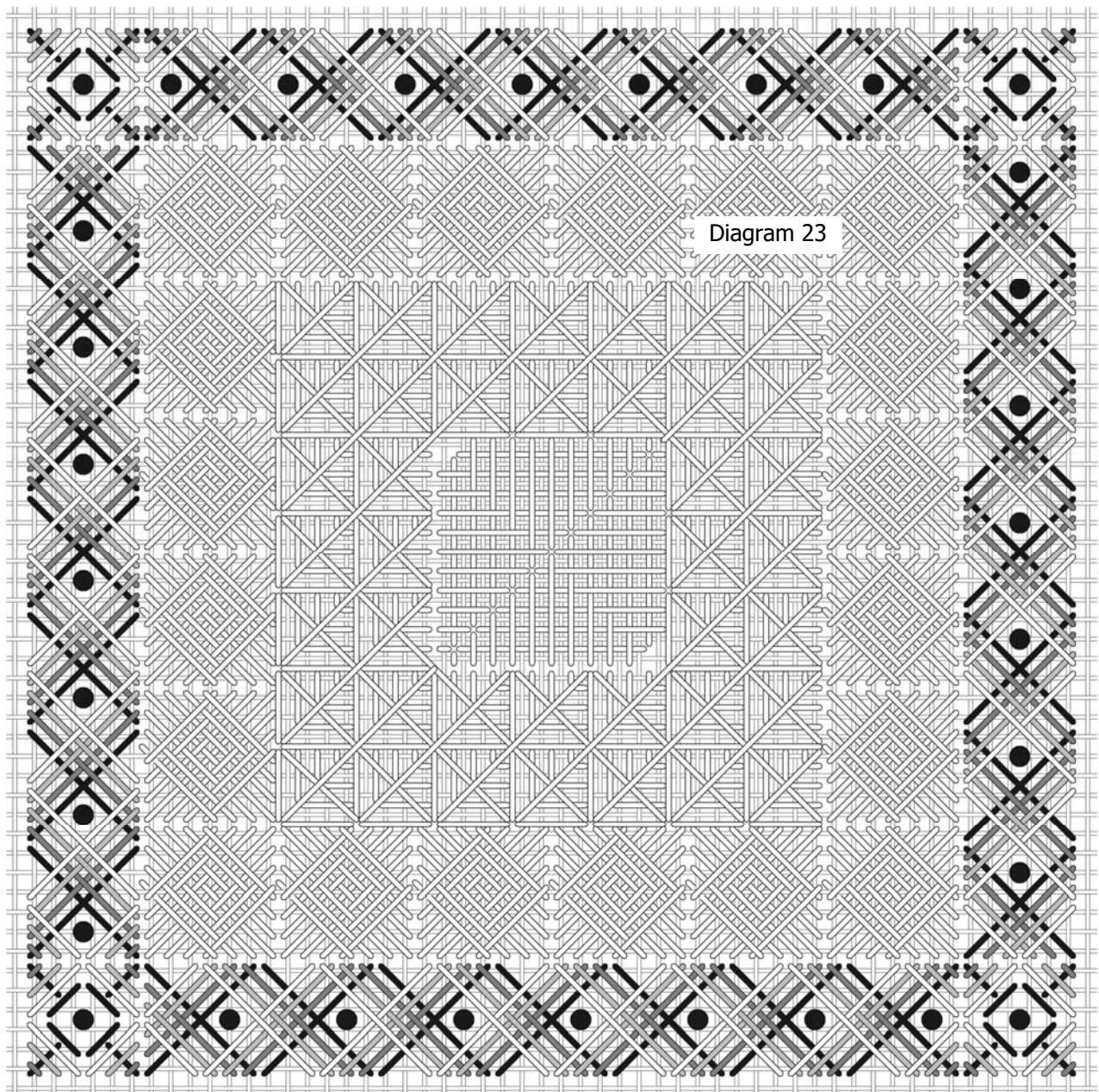


Diagram 23

ORNAMENT FINISHING INSTRUCTIONS

Materials needed:

2 pieces of mat board cut to the finished design size
2 pieces of batting cut slightly smaller than the finished design size
1 piece of backing fabric cut about 1 1/2" larger than the finished design size
cording
tassel
glue (such as E3000 or Sobo)

1. Trim the stitched piece to within 1 1/2" of the design.
2. Using glue or double stick tape, secure a piece of batting to each piece of mat board.
3. Lay the stitched piece over the batting, with the right side up. Fold the points of the stitched piece to the back side of the mat board and secure with a bit of glue. Fold in the sides of the stitched piece over the mat board and secure with glue. Let dry before proceeding.
4. In the same way, cover the second piece of mat board with the backing fabric, mitering in the points and securing with glue. Let dry before proceeding.
5. Glue the end of the tassel to one piece of mat board, having the top of the tassel even with the bottom point of the ornament. Glue the two pieces of covered mat board together, with the stitched design and backing fabric facing out. Let dry thoroughly before proceeding. Stack a heavy book on the glued ornament to make sure there is a good bond between the two pieces of mat board.
6. When thoroughly dry, glue the cording to the ornament. Tuck the end of the cording between the two pieces of mat board and work around the ornament, gluing as you go. At the top leave a generous loop of cording for a hanger, give a slight twist, then complete gluing the cording around the ornament, tucking in the end again when you reach the starting point. Allow to dry thoroughly.

I hope you've enjoyed stitching this ornament, and thank you for subscribing to my email list!

References

I recommend the following books for additional information on needlework:

Favorite Stitches for Linen and Canvas, Volumes I, II, III and IV, by Linda Driskell, Needlecrafts Unlimited Co., Gadsden, AL, www.888needleu.com

The Needlepoint Book, by Jo Ippolito Christensen, a Fireside Book by Simon & Schuster, Inc., 1976 and 1999, 1230 Avenue of the Americas, New York, NY 10020

Needlepoint Stitches (1988) and Stimulating Stitches (1992) by Jean Hilton, 43479 Alto Dr., Hemet, CA 92344

iStitches Vol. 1-V, Ruth Schmuff, available as app for electronic devices, (2010)

RESOURCES

THREADS:

Kreinik Mfg. Co., Inc., PO Box 1966, Parkersburg, WV 26102, kreinik@kreinik.com,
1-800-537-2166, www.kreinik.com

Rainbow Gallery, 7412 Fulton Ave. #5, North Hollywood, CA 91605-4126 www.rainbowgallery.com

ThreadworX, Inc., 12812 Garden Grove Blvd., Suite K, Garden Grove, CA 92843, 800 611-4311, threadworx.com

Dinky Dyes, 2529 Mesa Verde Ter., Henderson, NV 89074, 725 735-6103, dinkydyes.com

BEADS:

Mill Hill, Wichelt Imports, Inc., N162 Hwy 35, Stoddard, WI 54658, www.wichelt.com

CANVAS:

Zweigart, 232 Old New Brunswick Rd., Ste E, Piscataway, NJ 08854, www.zweigart.com

SOFTWARE:

EasyGrapher Stitch Wiz, Davis Computer Services, Inc., PO Box 750141, New Orleans, LA 70175
www.easygrapher.com

Easy Cross DeLuxe, Fulford Software Solutions, 92 Penrhyn Crescent, Chilwell,
Nottingham, NG9 5PA www.easycross.co.uk

FROSTED WINTER ORNAMENT 2020

Dinky Dyes

Silk Floss 08 Mint Ice

Kreinik

#8 Braid 9194 Star Green

Mill Hill Glass Seed Beads

02017 Crystal Aqua

Rainbow Gallery

Entice E211 Twinkle Blue

ThreadworX

Cotton floss 01018 Baby Blue Eyes

Overdyed #8 Braid 710108 Baby Blue Eyes

Other materials needed:

Zweigart 18 ct. Victorian Green mono canvas, 10" x 10"

2 pairs of 10" stretcher bars

22 tapestry needle

Laying tool

About DebBee's Designs

I used threads I had on hand to stitch this little ornament; use what you have on hand, change the colors, change the textures, do what makes you happy! This year I decided to go with something a little non-traditional as far as color choices, but if you prefer combinations of red and green, feel free to change the colors.

This ornament is a free gift for my email subscribers, so please don't share it or copy it. If someone would like the chart, please direct them to my website; I'll be happy to give them a pdf when they subscribe.

However you celebrate the season, enjoy!

Debbie Rowley

debbie@DebBeesDesigns.com

www.DebBeesDesigns.com



www.facebook.com/DebBeesDesigns.

