

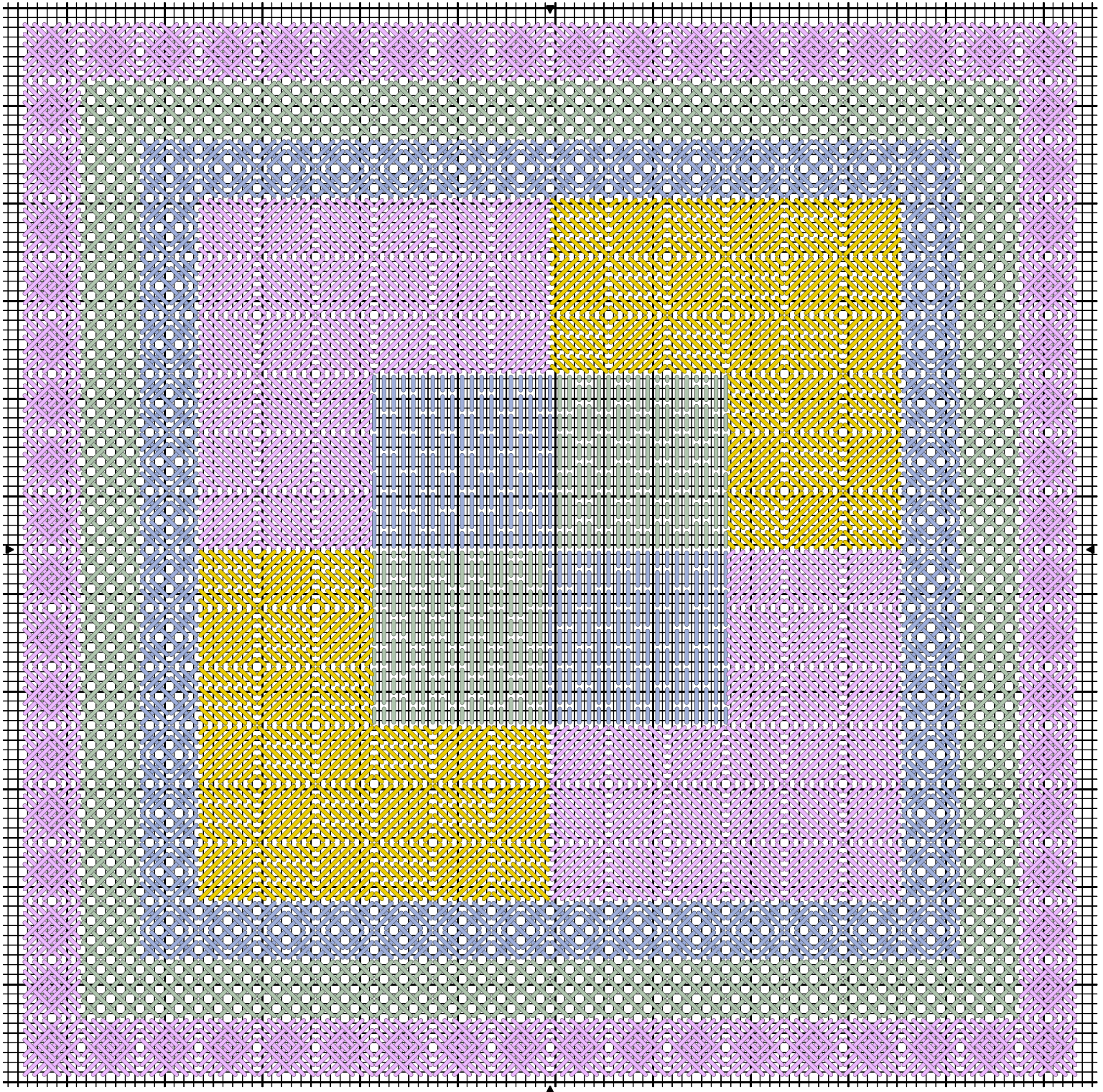
# DebBee's Designs



## *SPRING QUILT BLOCK*

©2020 Debbie Rowley for DebBee's Designs. All rights reserved.  
Design size 108 X 108 stitches, about 6" square on 18 ct. canvas

Spring Quilt Block



## SPRING QUILT BLOCK

By Debbie Rowley

This design was created for American Needlepoint Guild (ANG) Holed Up Minis (HUM). I gave them the chart without instructions or thread choices, but as I stitch it I'll record what I used to stitch my model.

I'm beginning to stitch in the center of the chart. Find the approximate center, and begin stitching there. The table will show the thread I'm using, with a space for recording your own choice so you can stitch from stash and make your own color choices.

Thread Type	As Shown	Your Choice
Stranded floss	Gumnuts Stars 386 Medium Cornflower (3)	

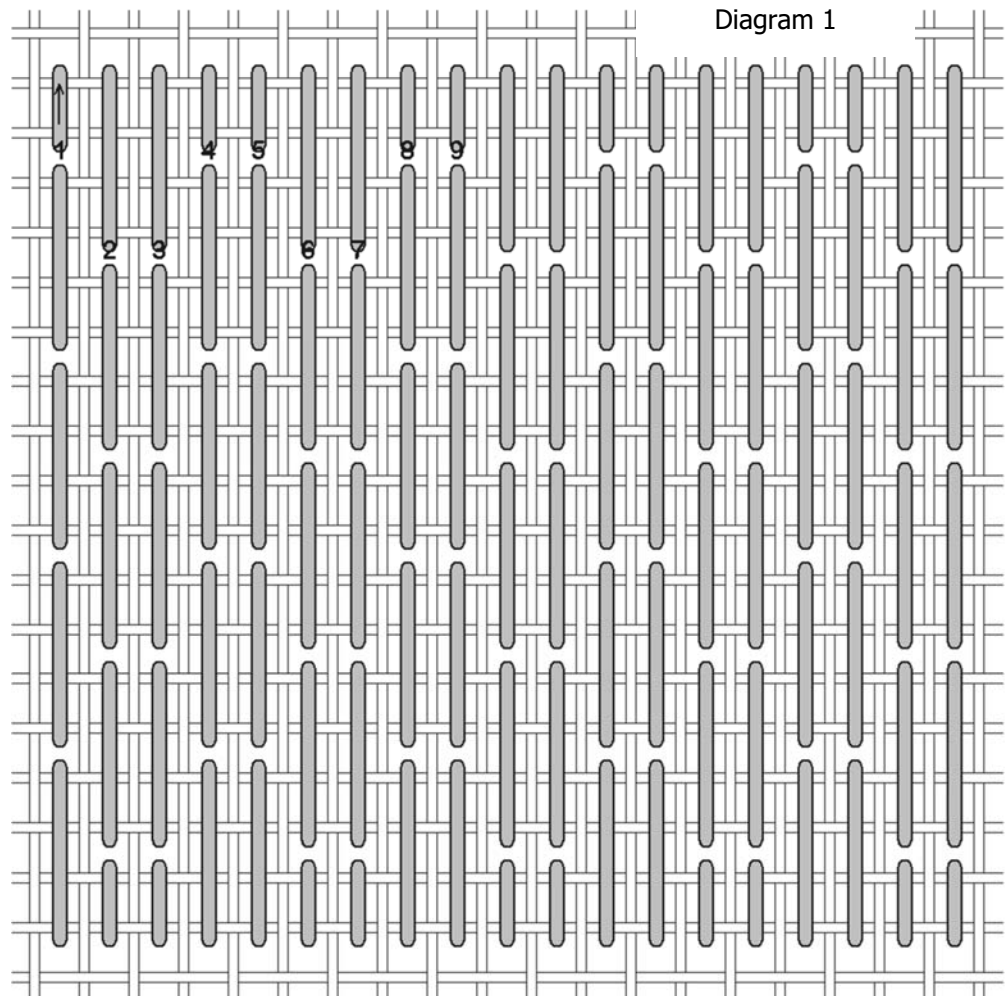
I'm using three strands for these first stitches, but you may use more or fewer strands to get the coverage you want.

### DOUBLE BRICK

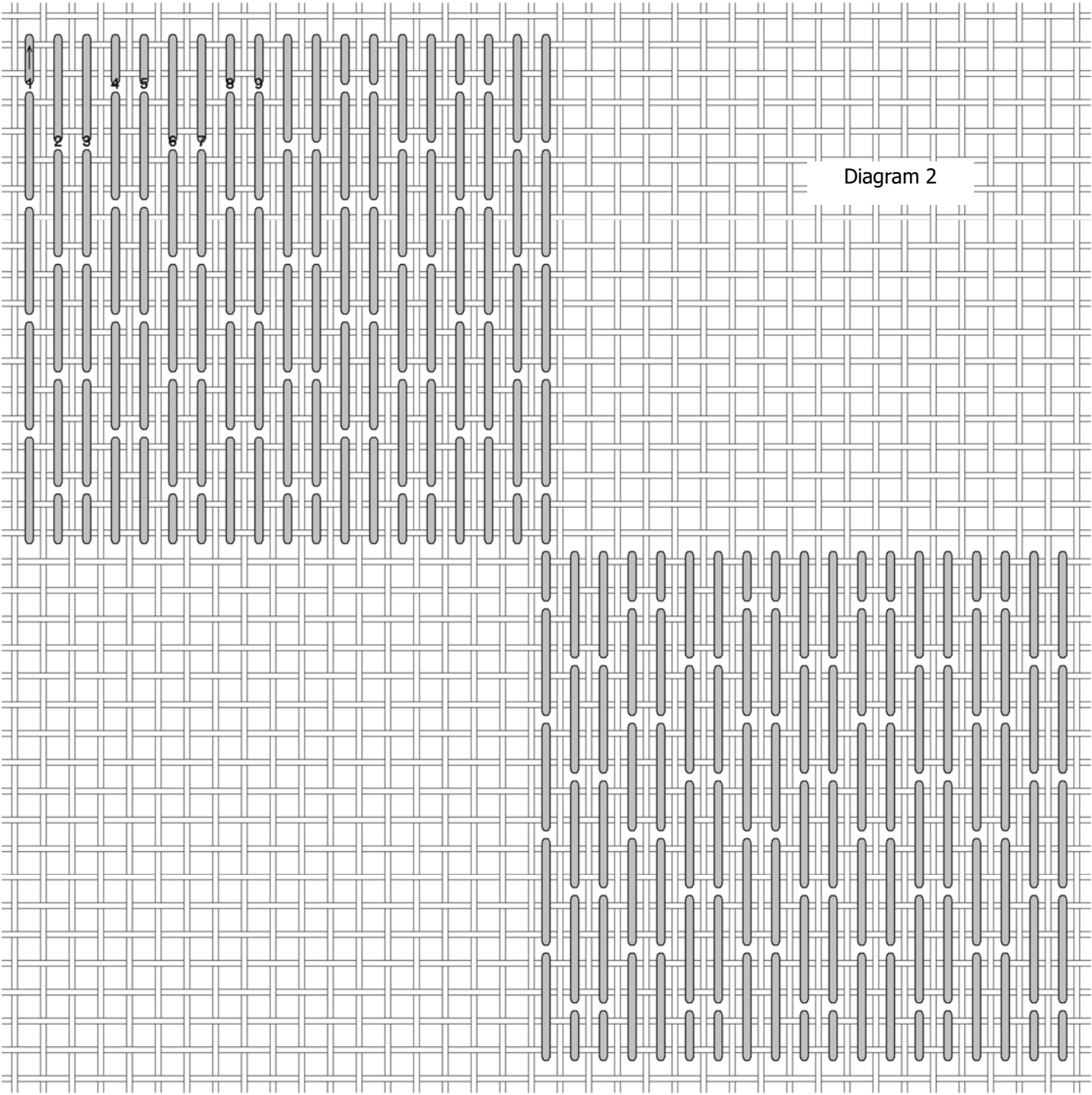
The center four blocks are filled with double brick stitch and Parisian stitch. There will be some compensation at the edges, but it's laid out for you in the diagrams.

Anchor the thread with an away knot. Bring the needle up to begin stitching 18 canvas threads up from the center, and 18 canvas threads left of the center. I'm beginning with the first color listed and will stitch both blocks with the first color, then both blocks with the second color.

Double brick is offset straight stitches in pairs. This is the upper left of center block. I stitched in horizontal rows from the left to the right, then right to left.



If you still have thread in your needle, you can continue on to the lower right block.



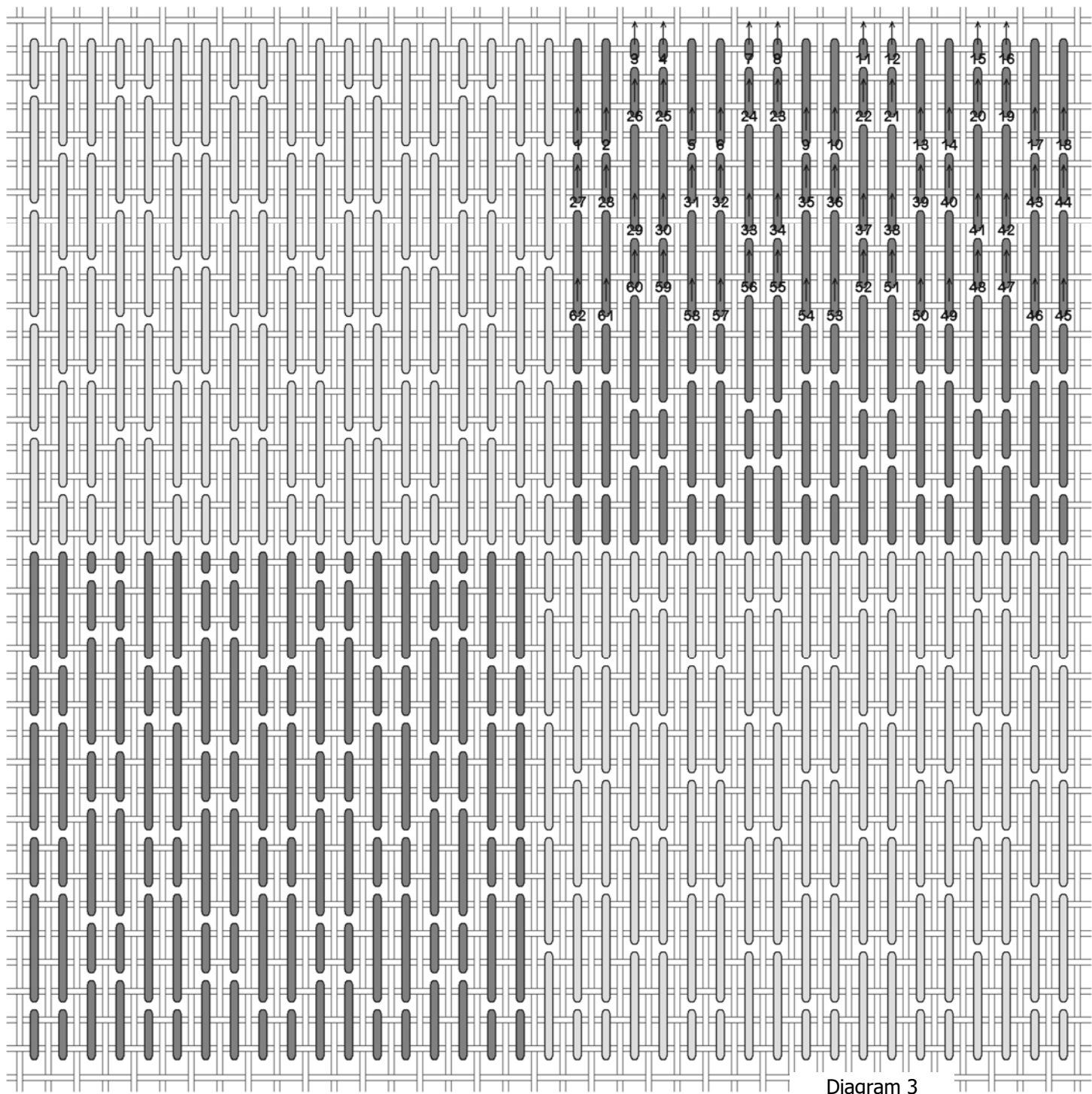
End off this color after stitching the lower right block.



# DOUBLE PARISIAN

Thread Type	As Shown	Your Choice
Stranded floss	Gumnuts Stars 545 Medium Forest Grove (3)	

Double Parisian is a combination of two long stitches and two short stitches, offset. There will be compensation at the edges, shown in the diagrams. Like the double brick pattern, I stitched in horizontal rows left to right, then right to left.



## GIANT SCOTCH

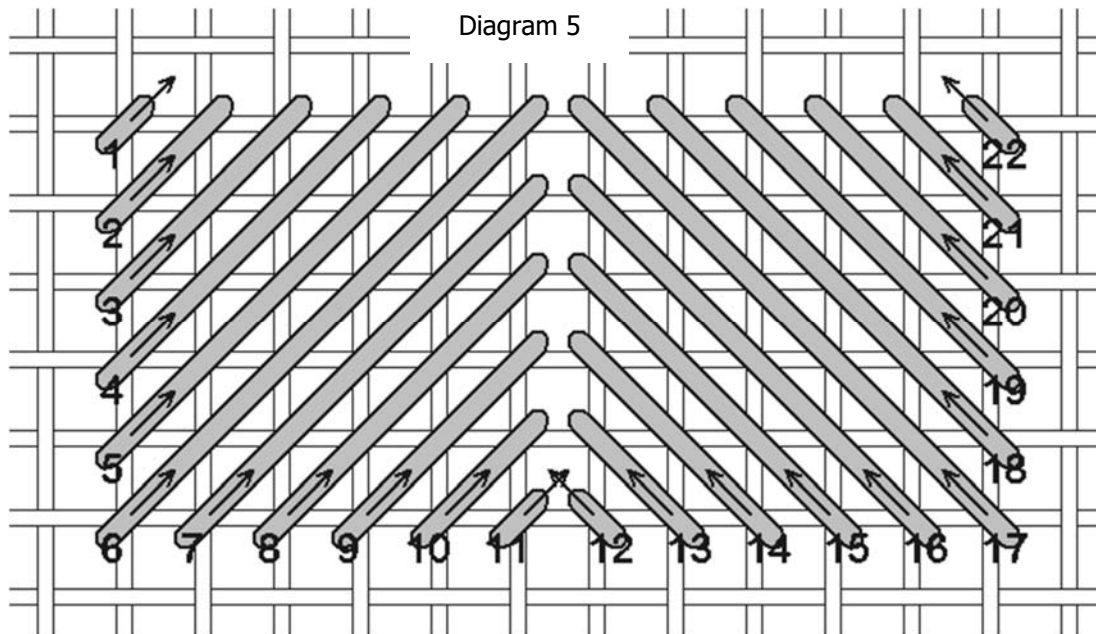
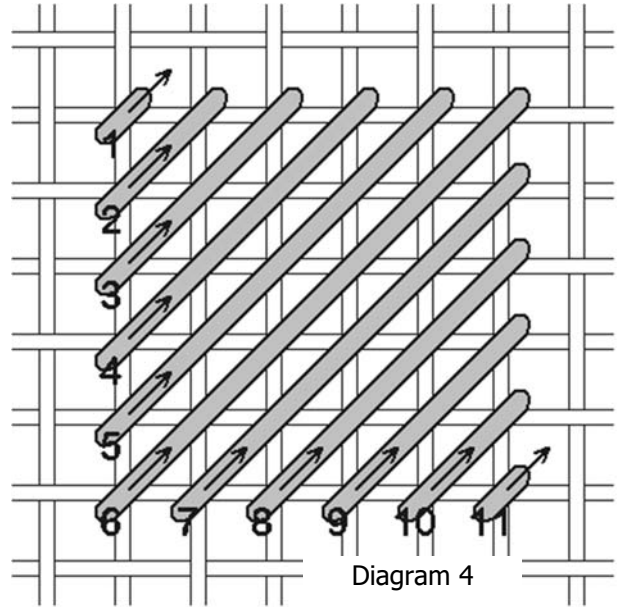
Thread Type	As Shown	Your Choice
Silk/wool blend	Gumnuts Poppies 275 Medium Hyacinth (1)	

The next areas are filled with giant reverse scotch. It's called "giant" because it's over 6 canvas threads instead of 4. Otherwise, it's just a scotch stitch.

The basic stitch is shown in Diagram 4.

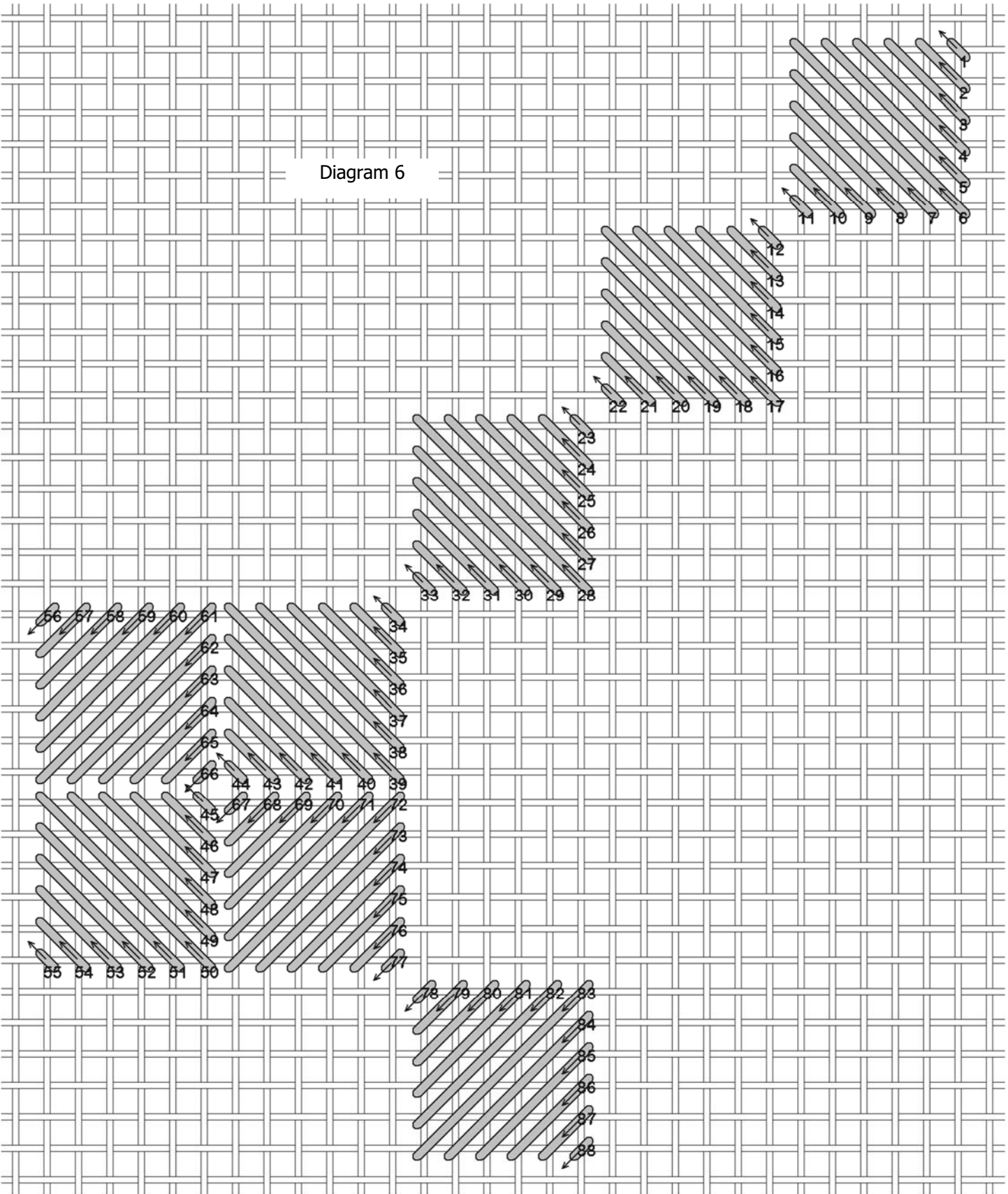
You can stitch all of the blocks slanted the same way, or reverse them as shown in Diagram 5.

I stitched with one strand of the Poppies as it came from the skein.



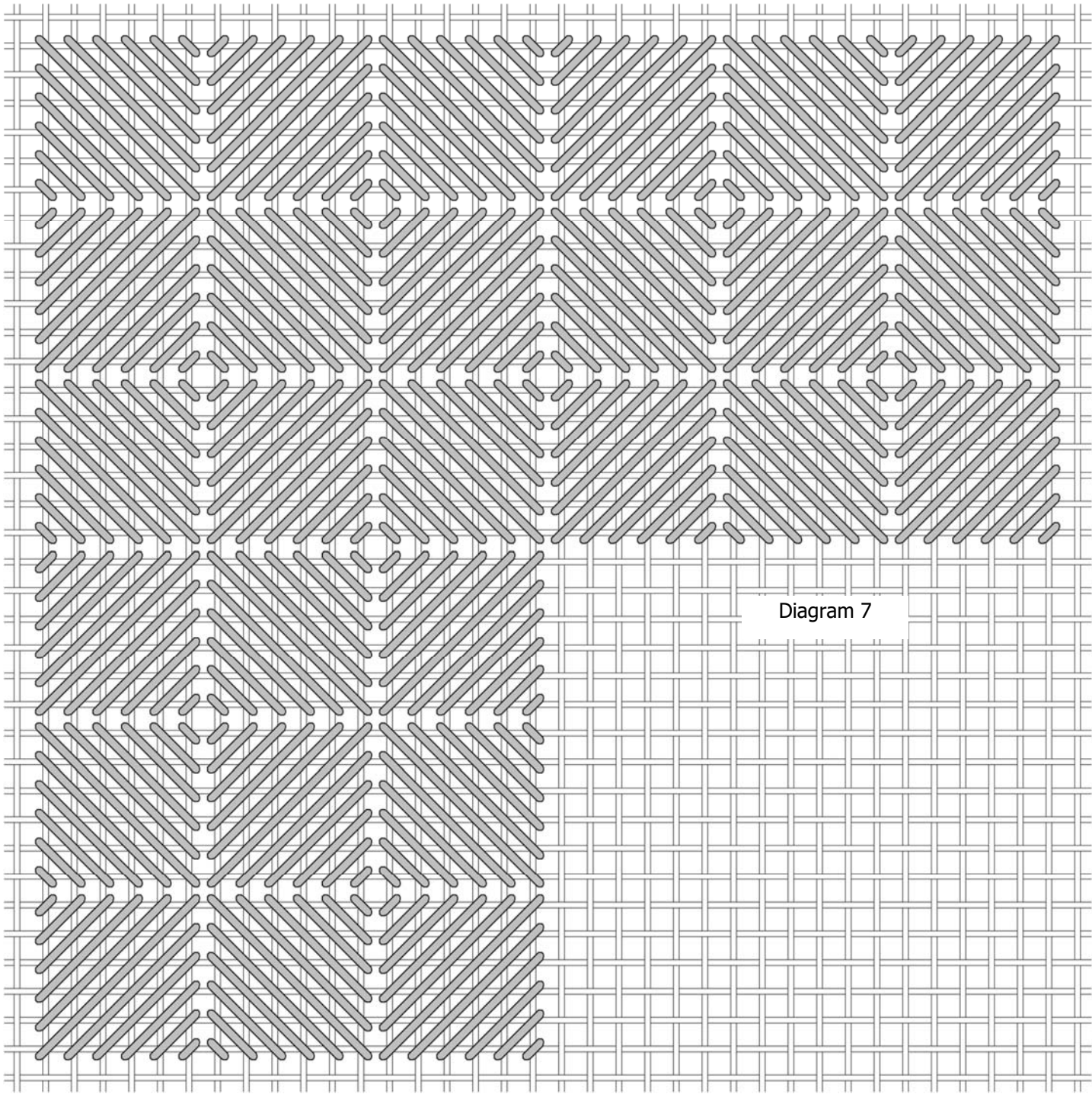
I anchored my threads with an away knot, placed diagonally so I could stitch toward the knot and cover the tail as I stitched. I ended by weaving under the stitches on the back.

You can stitch these in horizontal or vertical rows, but I chose to stitch in diagonal rows as shown in Diagram 6.



Or, you may find a path that makes more sense to you. Really, there's no right or wrong way to stitch these, just whatever you find comfortable for you.

Here's the entire area.





There are two areas of giant scotch, shown here with the center blocks. Both areas are stitched with the same thread.

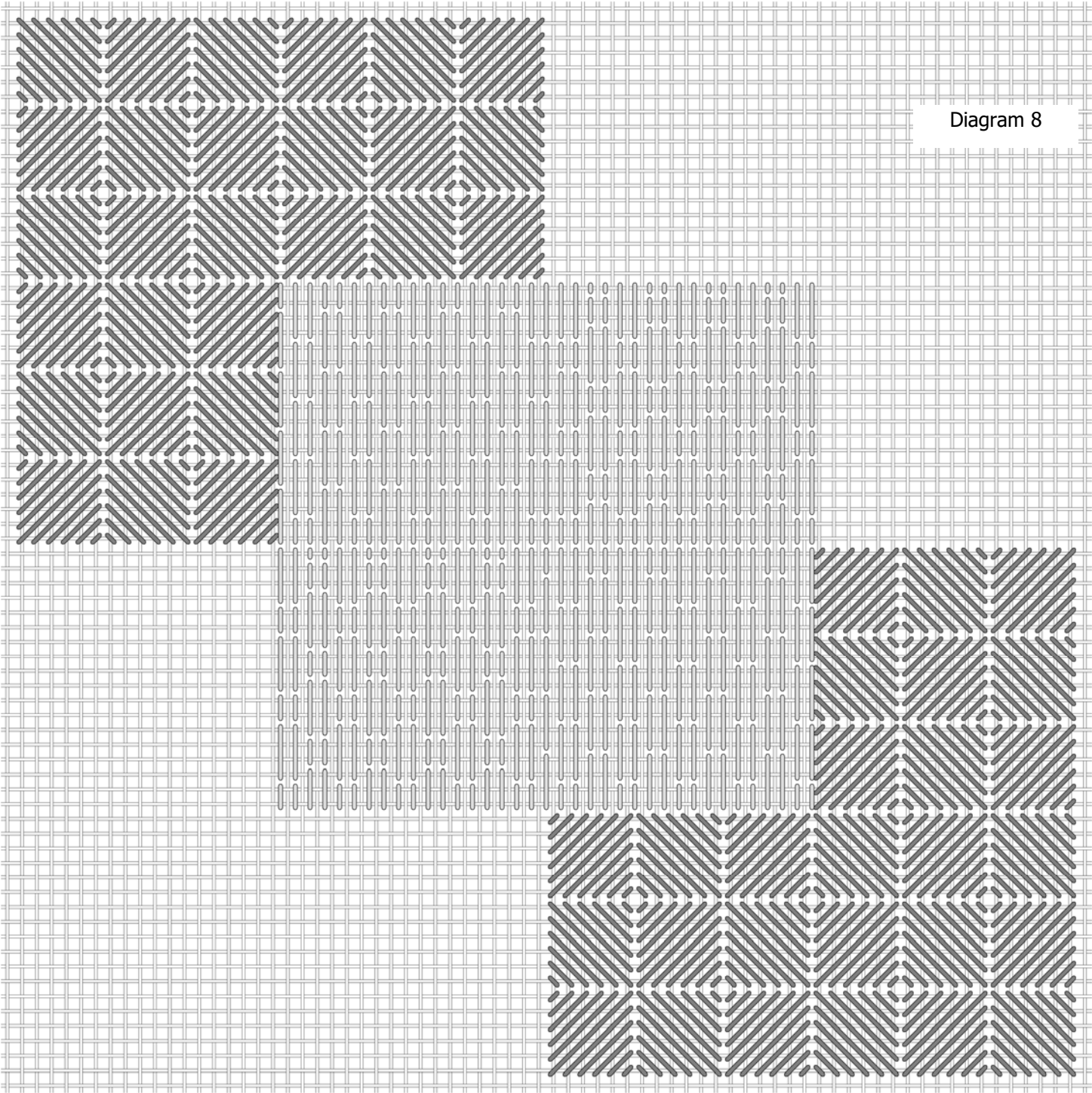
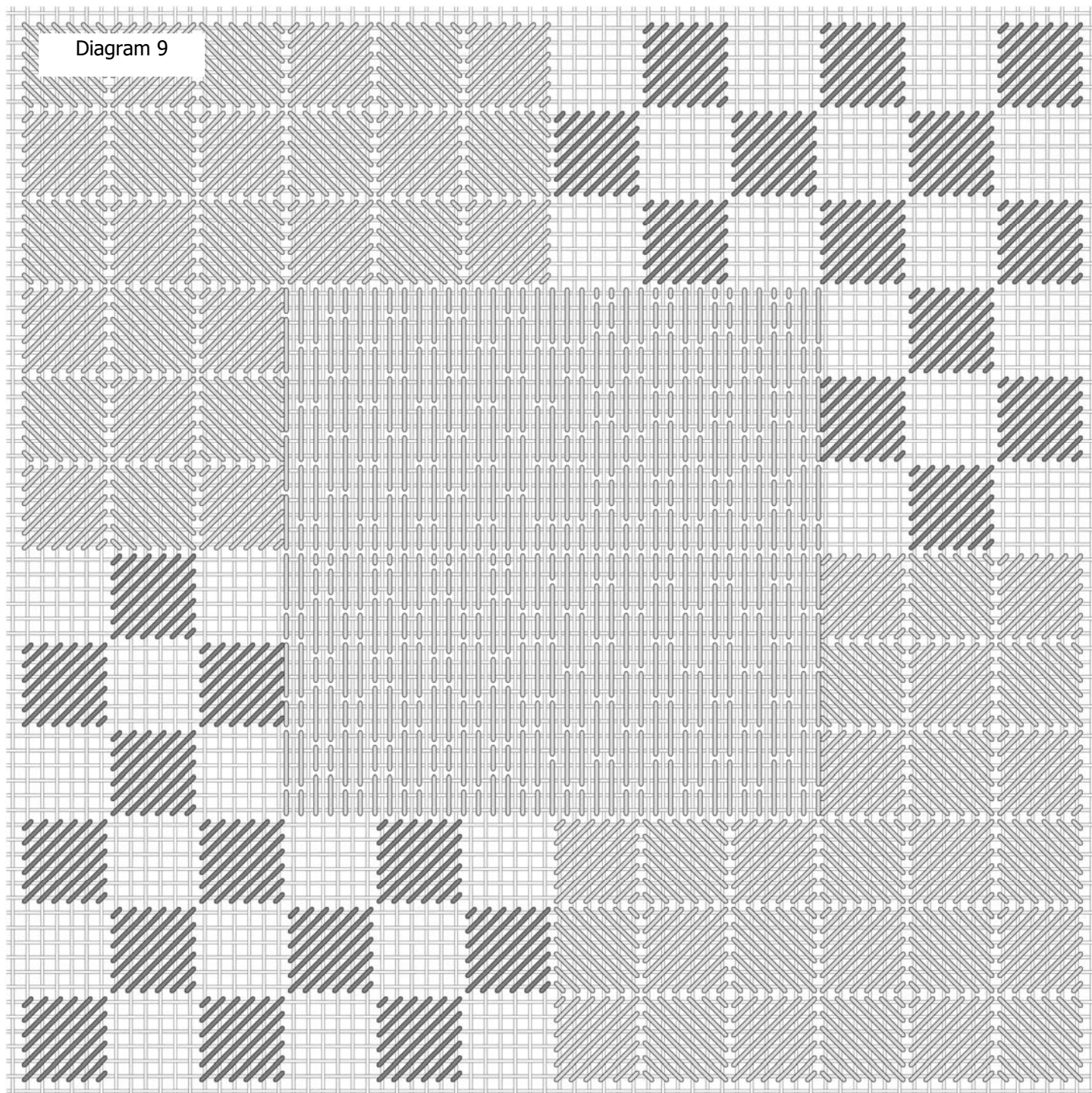


Diagram 8

## GIANT SCOTCH WITH CASHMERE

Thread Type	As Shown	Your Choice
Silk/wool blend	Gumnuts Poppies 706 Medium Lemon Crush (1)	

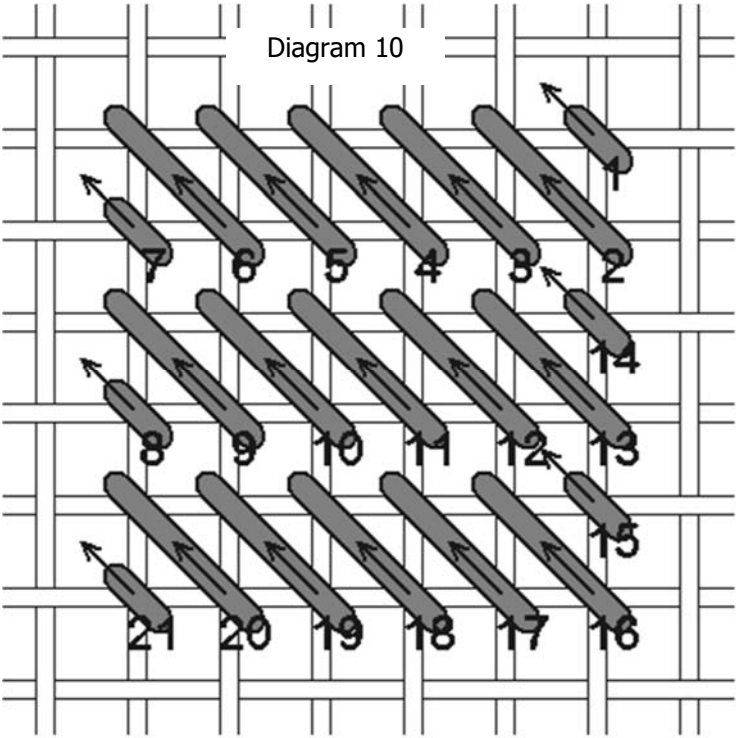
The next area is alternating blocks of giant scotch, just like before, with blocks of cashmere stitch. First I stitched the giant scotch. Notice that all of these scotch blocks are slanted the same way, not reversed as before.



Thread Type	As Shown	Your Choice
Silk pearl	Gumnuts Buds 706 Medium Lemon Crush (1)	

After stitching all of the giant scotch stitches, fill the spaces between with cashmere stitches. These are smaller stitches so I used a smaller thread in the same color.

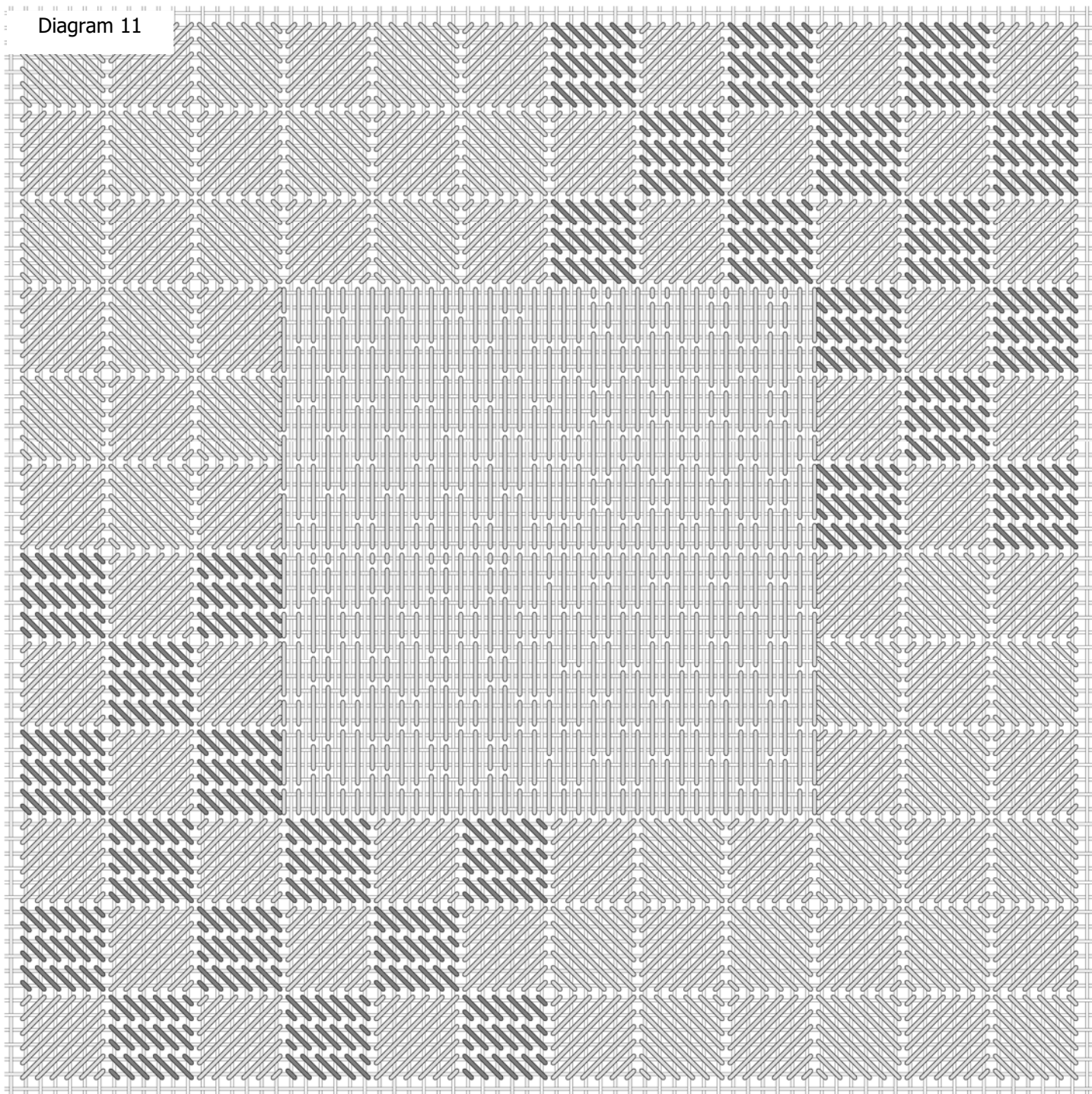
Stitch the cashmere stitches as shown.



All of the cashmere stitches are slanted the same way, not reversed.

I didn't worry about thread carries between blocks because the canvas is solidly covered and they wouldn't show through.

Diagram 11



This shows the entire area of giant scotch, and giant scotch with cashmere blocks. Note that the cashmere blocks slant opposite the giant scotch blocks.



## GIANT RICE

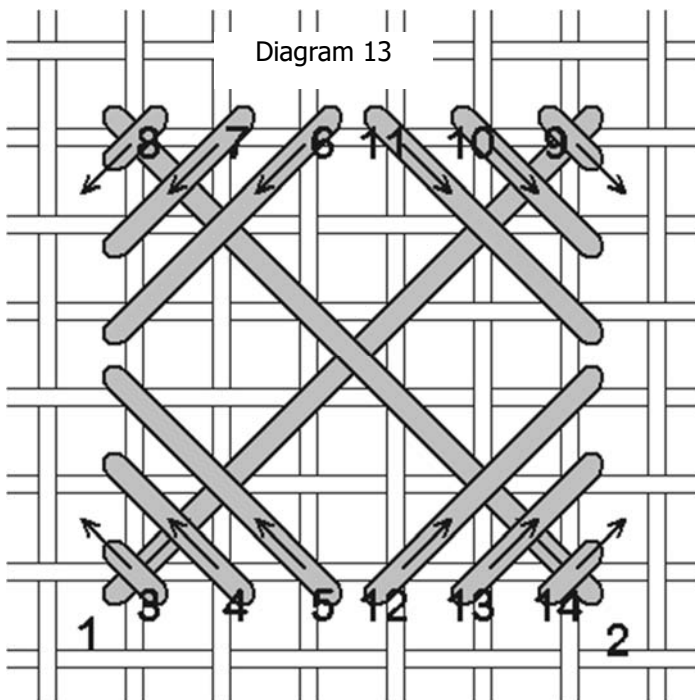
Thread Type	As Shown	Your Choice
Silk pearl	Gumnuts Buds 386 Medium Cornflower (1)	

Rice stitches are fairly common as borders and filling stitches in counted canvas work, and here the rice stitch is over 6 canvas threads so considered "giant". A rice stitch is a cross stitch, either upright or regular cross stitch, with the "legs" of the base cross stitch tied one, two or more times. Here each leg is tied 3 times at the top and 3 times at the bottom.

The basic rice stitch is shown here.

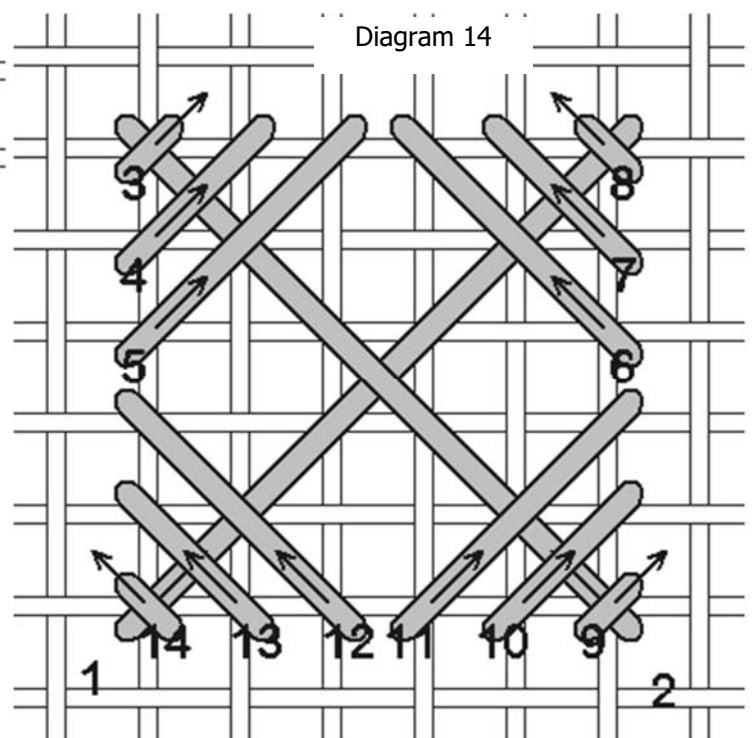
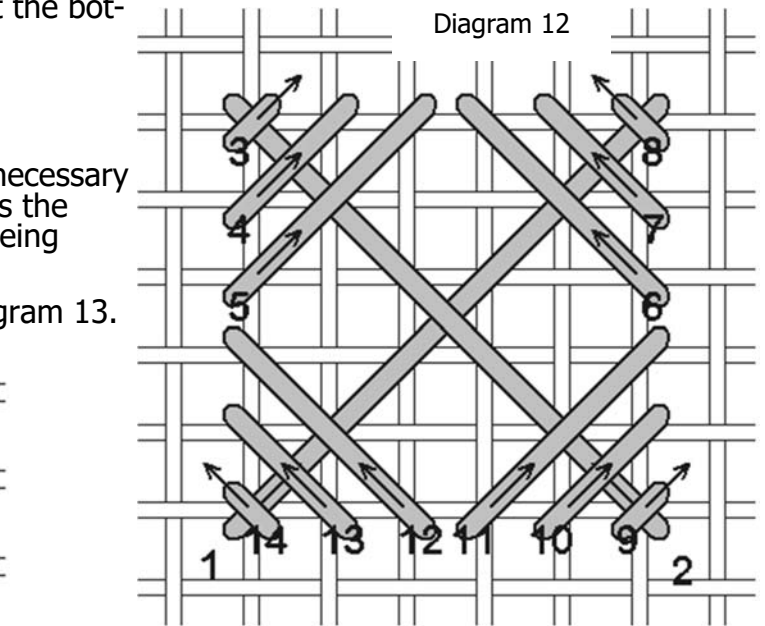
However, as I was stitching I discovered it was necessary to use a different stitching order. The stitch looks the same on the front, but the thread carries was seeing through the canvas disturbed me.

So I stitched the across the top as shown in Diagram 13.



I stitched down the right side as shown in Diagram 14.

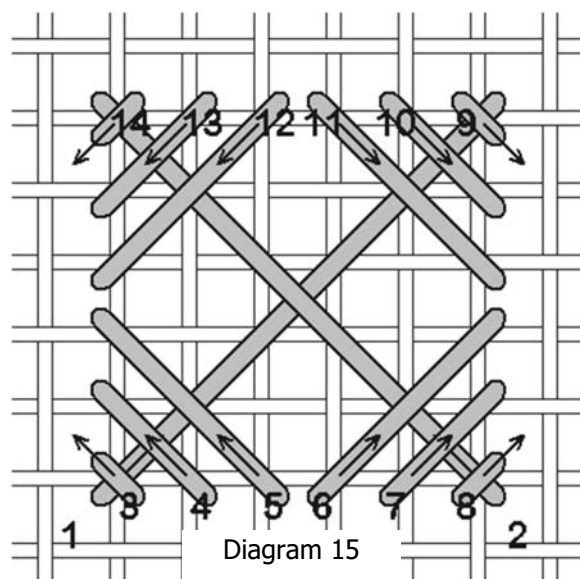
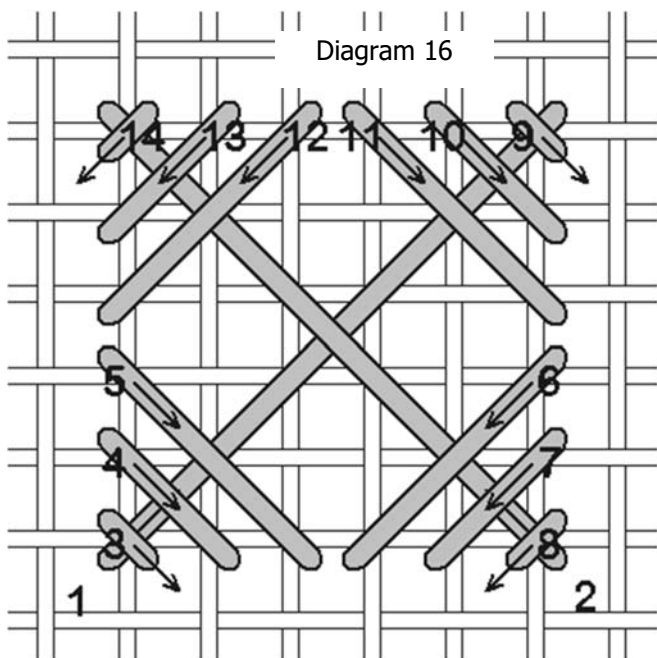
These are subtle differences but stitching in a different order left the centers open with no thread carries showing through.



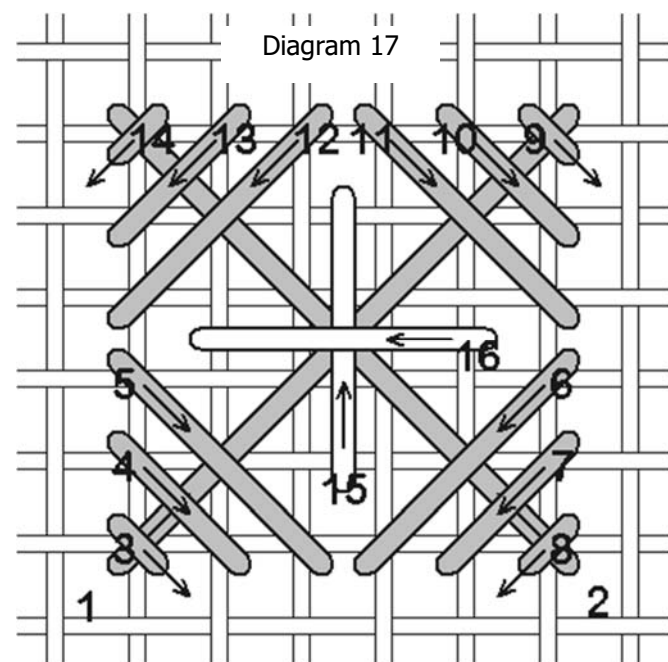


I stitched across the bottom, going from the right side to the left side, as shown in Diagram 15.

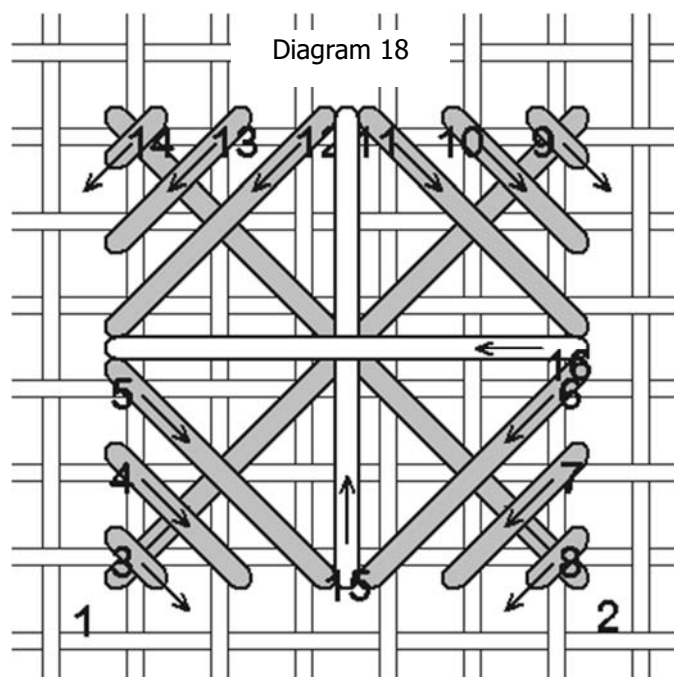
And I stitched up the left side, from bottom to top, as shown in Diagram 16.



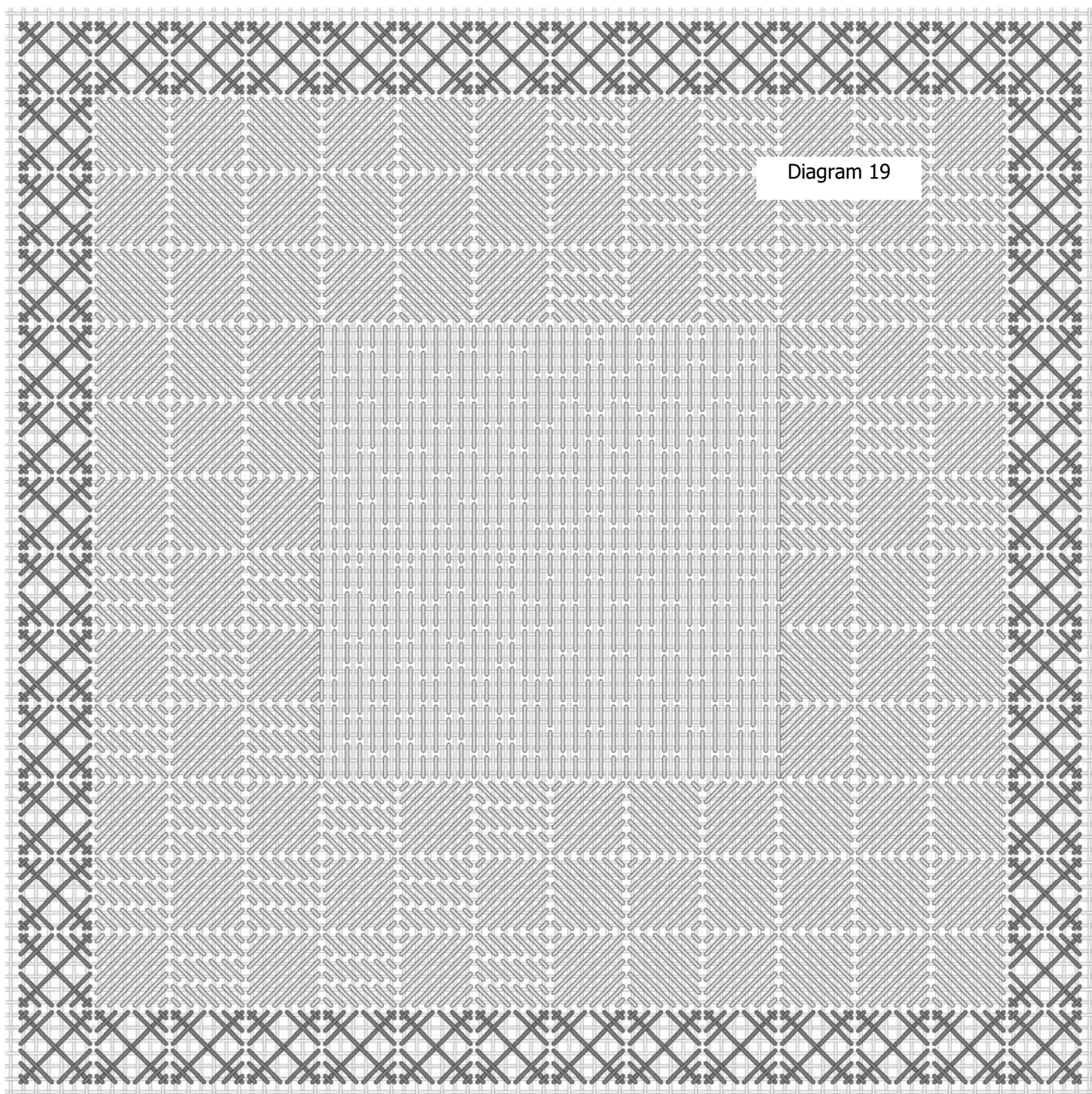
Now, if I had metallics in my kit, I would probably finish off like this:



Or  
this:



And if that were the case, the thread carries wouldn't matter because the center open canvas would be covered. Just something to consider!

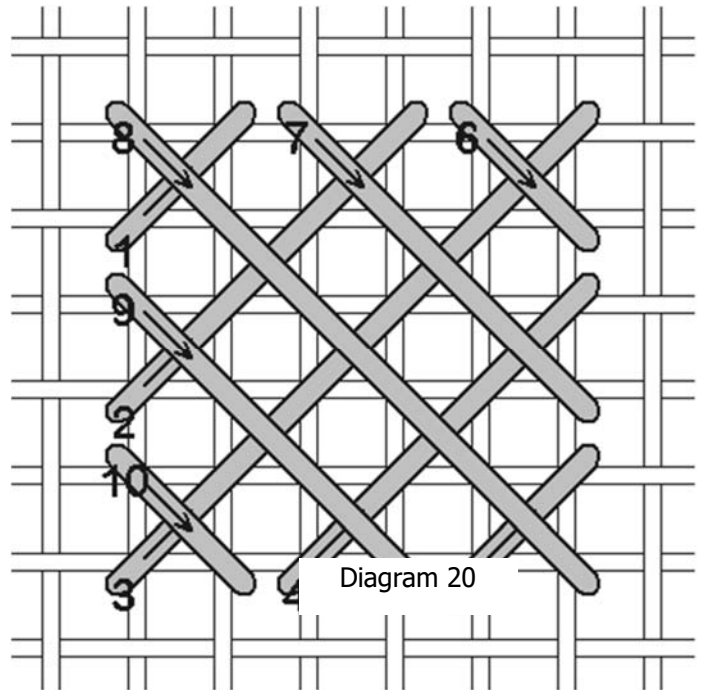


Here's the completed rice stitch border. Just two more borders to go!

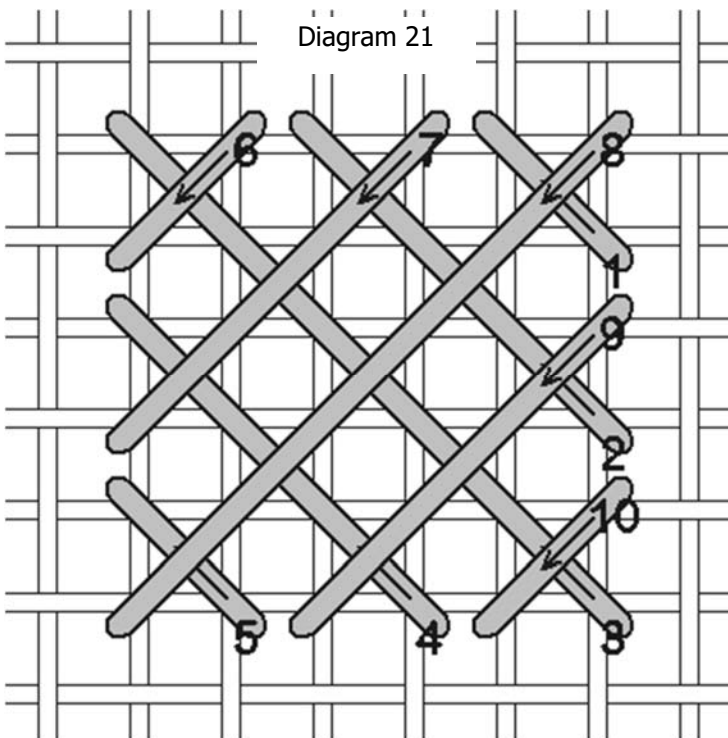
## BOUND CROSS VARIATION

Thread Type	As Shown	Your Choice
Silk pearl	Gumnuts Buds 545 Medium Forest Grove(1)	

A bound cross is a series of diagonal lines all crossed one way. First stitch the bottom layer, then the top layer. This is a variation of a bound cross because it's expanded to cover six canvas threads. The basic diagram is shown in Diagram 20.

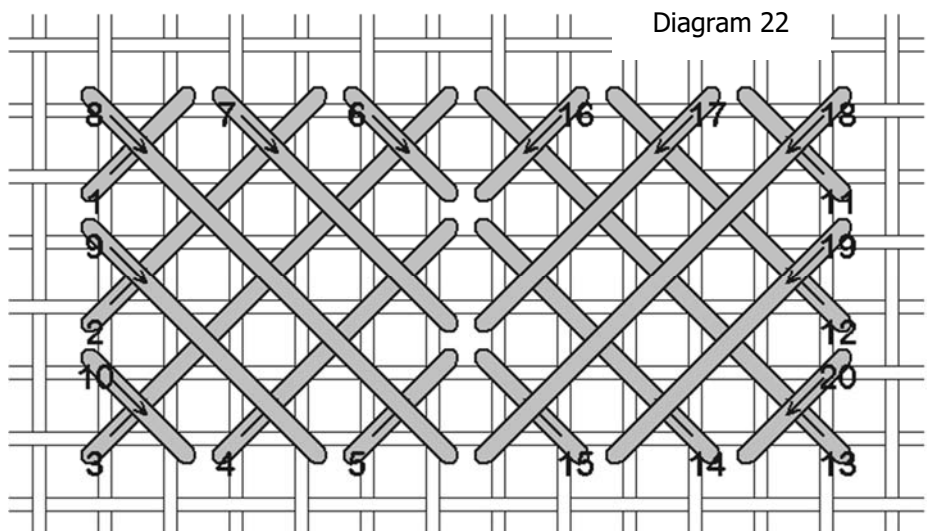


If you prefer you may stitch it as shown in Diagram 21, reversing which threads are on top.

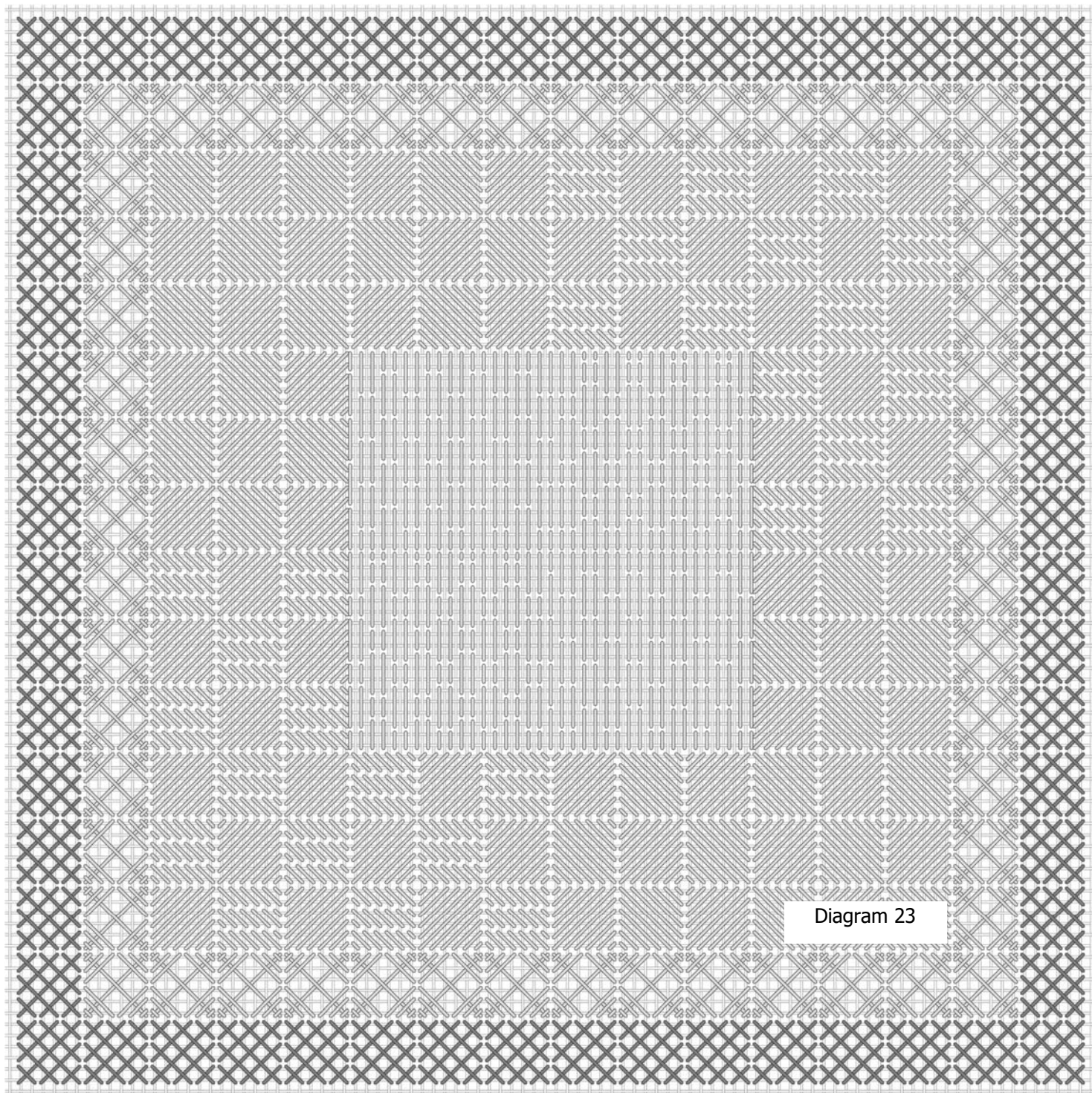


You can even alternate the blocks as shown in Diagram 22.

I stitched all of the blocks as shown in Diagram 20. You may find a different order or stitch direction that you prefer, just try to be consistent.





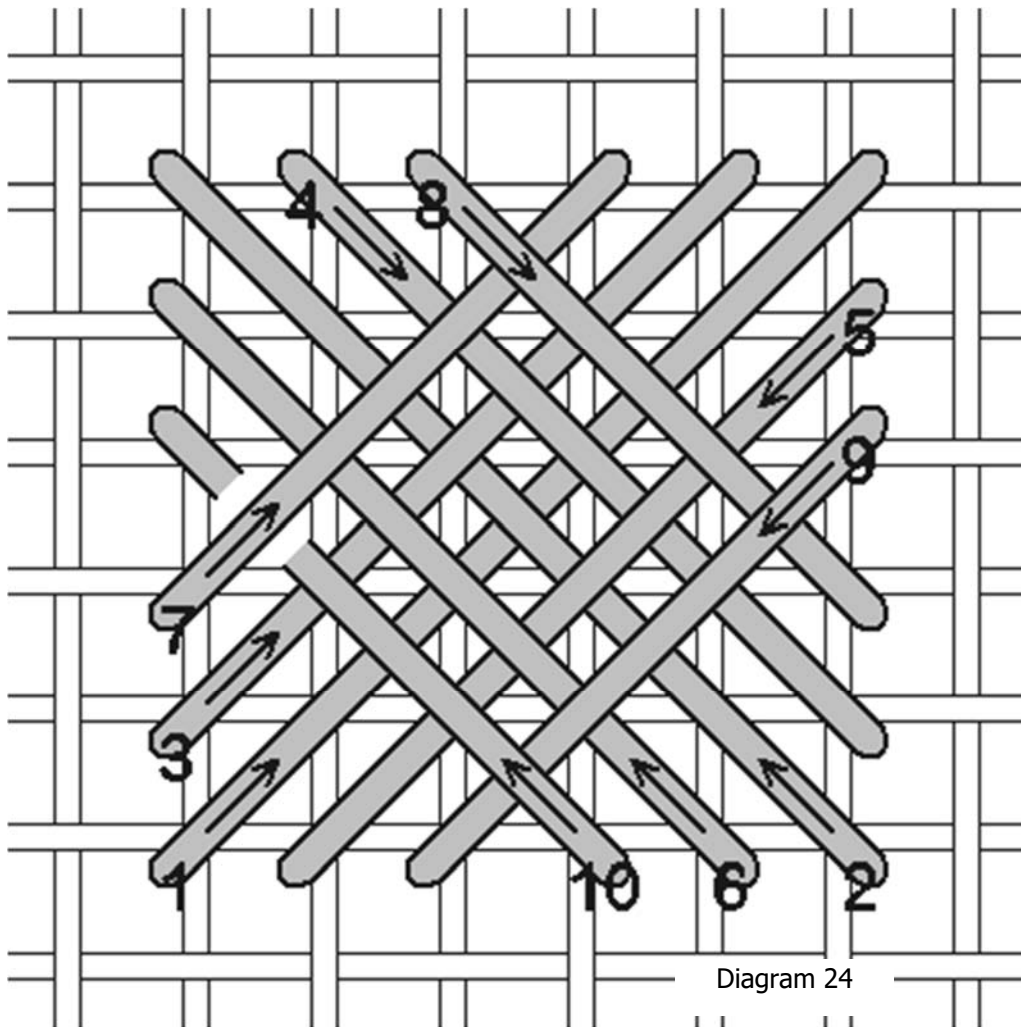


The completed bound cross variation border.

## WAFFLE STITCH

Thread Type	As Shown	Your Choice
Silk pearl	Gumnuts Buds 275 Medium Hyacinth(1)	

The last stitch in our project is a waffle stitch, forming the outer border. Stitch as shown in Diagram 24. I like this stitch because most of the thread is on top of the canvas. The thread carries on the back should form an open square. Because of the way the thread carries are on the back, I recommend starting and stopping with a pin stitch. There won't be enough thread on the back to catch the tail on an away knot, and not enough to weave in at the end.



Before ending the final stitch, slide the needle between the canvas and stitch 7 before ending. This puts a thread on top of every thread all the way around and gives the waffle stitch a more finished, complete look.



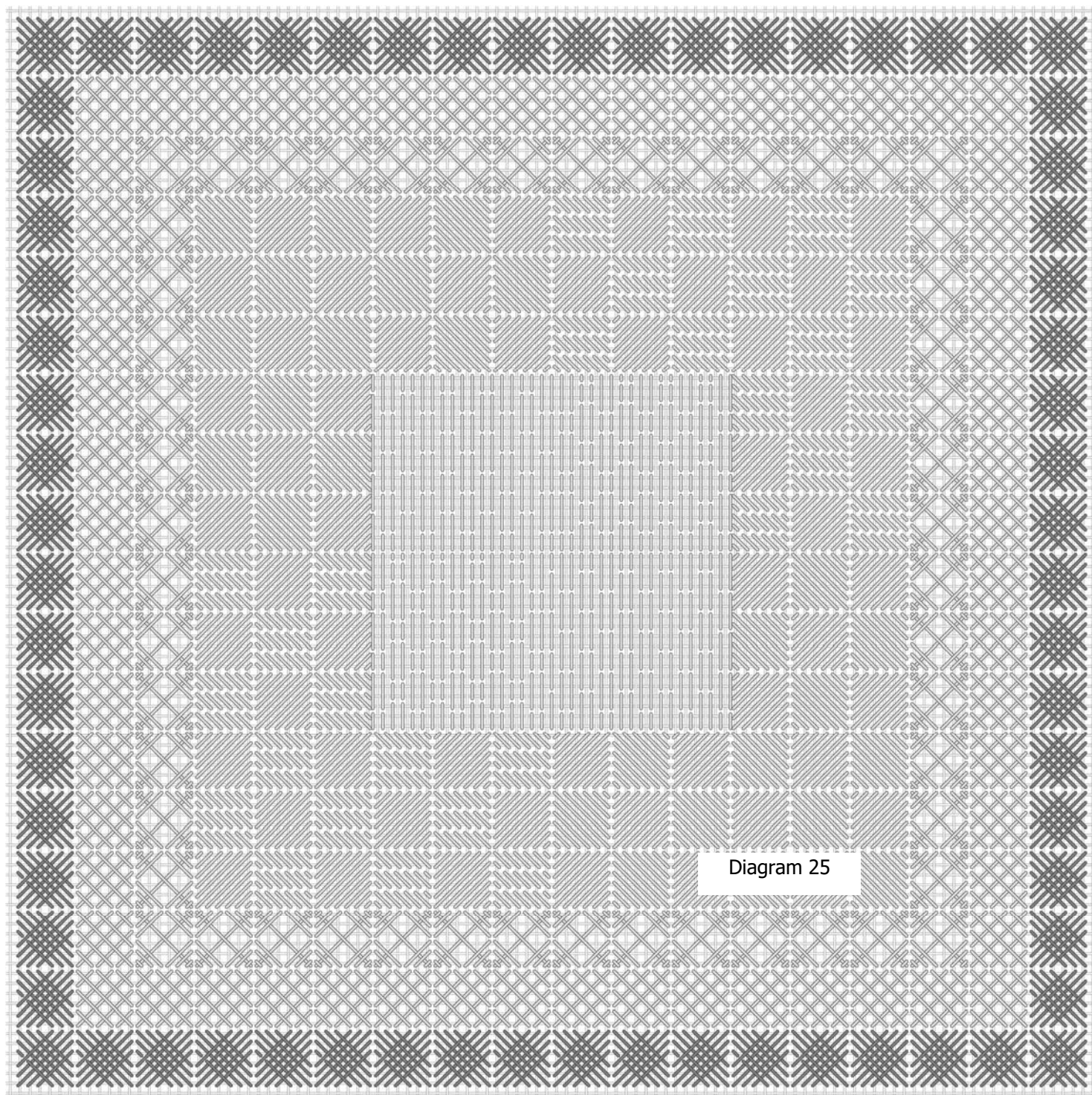


Diagram 25

That completes our little Spring Quilt Block! I hope you've enjoyed stitching it as much as I have. Let me know if you have any questions while you are stitching:

[Debbie@DebBeesDesigns.com](mailto:Debbie@DebBeesDesigns.com)

## REFERENCES

I recommend the following books for additional information on needlework:

Favorite Stitches for Linen and Canvas, Volumes I, II, III and IV, by Linda Driskell, Needlecrafts Unlimited Co., Gadsden, AL, [www.888needleu.com](http://www.888needleu.com)

The Needlepoint Book, by Jo Ippolito Christensen, a Fireside Book by Simon & Schuster, Inc., 1976 and 1999, 1230 Avenue of the Americas, New York, NY 10020

Needlepoint Stitches (1988) and Stimulating Stitches (1992) by Jean Hilton, 43479 Alto Dr., Hemet, CA 92344

## RESOURCES

### THREADS:

Gumnut Yarns, P.O. Box 9335, BATHURST NSW 2795, Australia, 61 2 6336 9119,  
[www.GumnutYarns.com](http://www.GumnutYarns.com), [info@GumnutYarns.com](mailto:info@GumnutYarns.com)

### CANVAS:

Zweigart, 232 Old New Brunswick Rd., Ste E, Piscataway, NJ 08854, [www.zweigart.com](http://www.zweigart.com)

### SOFTWARE:

EasyGrapher Stitch Wiz, Davis Computer Services, Inc., PO Box 750141, New Orleans, LA 70175  
[www.easygrapher.com](http://www.easygrapher.com)

Easy Cross DeLuxe, Fulford Software Solutions, 92 Penrhyn Crescent, Chilwell,  
Nottingham, NG9 5PA [www.easycross.co.uk](http://www.easycross.co.uk)

*Cover Photography by Rod Rowley*

## *SPRING QUILT BLOCK*

### **Gumnut Yarns**

#### **Stars Silk Floss**

386 Medium Cornflower

545 Medium Forest Grove

#### **Buds Silk Pearl**

275 Medium Hyacinth

386 Medium Cornflower

545 Medium Forest Grove

706 Medium Lemon Crush

#### **Poppies Silk/Wool Blend**

275 Medium Hyacinth

706 Medium Lemon Crush

#### *Other materials needed:*

Zweigart 18 ct. Eggshell mono canvas, 12" x 12"

2 pairs of 8" stretcher bars

22 tapestry needle

Laying tool

### **About DebBee's Designs**

My goal as a designer is to provide the clearest instructions possible so your stitching experience is enjoyable and free of frustrations. Please contact me if you have any questions or problems with your project.

I support my local needlework shop, and I encourage you to do the same.

A friendly word about copying—please don't!

This project was inspired by quilt block patterns. I used threads I had on hand, so explore your stash to find colors and threads that appeal to you. I hope you enjoy this project!

Debbie Rowley  
debbie@DebBeesDesigns.com  
www.DebBeesDesigns.com



[www.facebook.com/DebBeesDesigns](http://www.facebook.com/DebBeesDesigns).

