

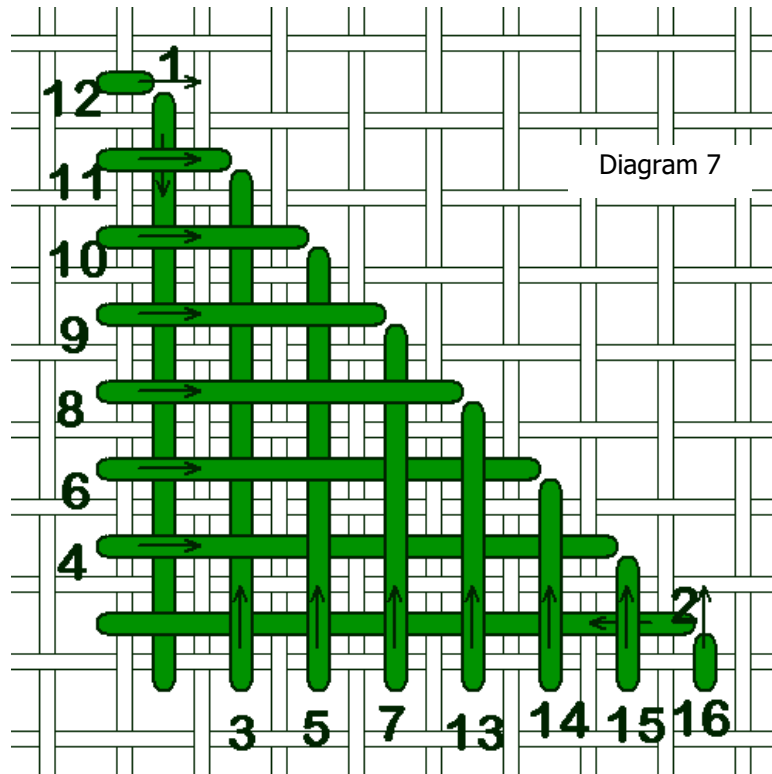
## Section 2—sprat's heads

The next rows or bands are filled with sprat's heads, stitched with 2 strands of Splendor S907 Dark Pistachio Green.

I anchored with a loop start, since I was working with 2 strands. I won't go over the instructions for anchoring with a loop start again, since I covered that in the first step.

These sprat's heads are stitched a little bit differently, so please pay attention to the counts and steps.

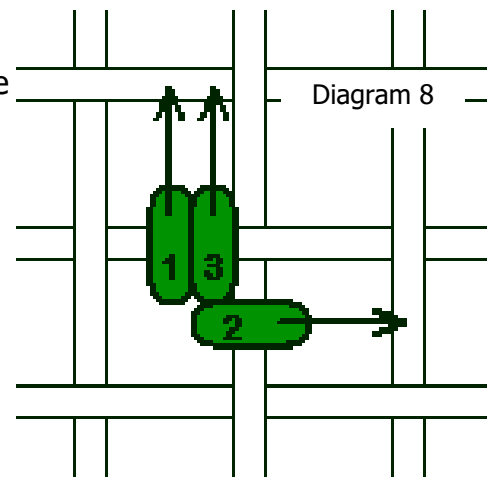
Begin as shown. The threads cross each other until stitch 9. Stitches 9-12 are straight stitches, covering the previous stitches without weaving; just lay them on top of the previous stitches.



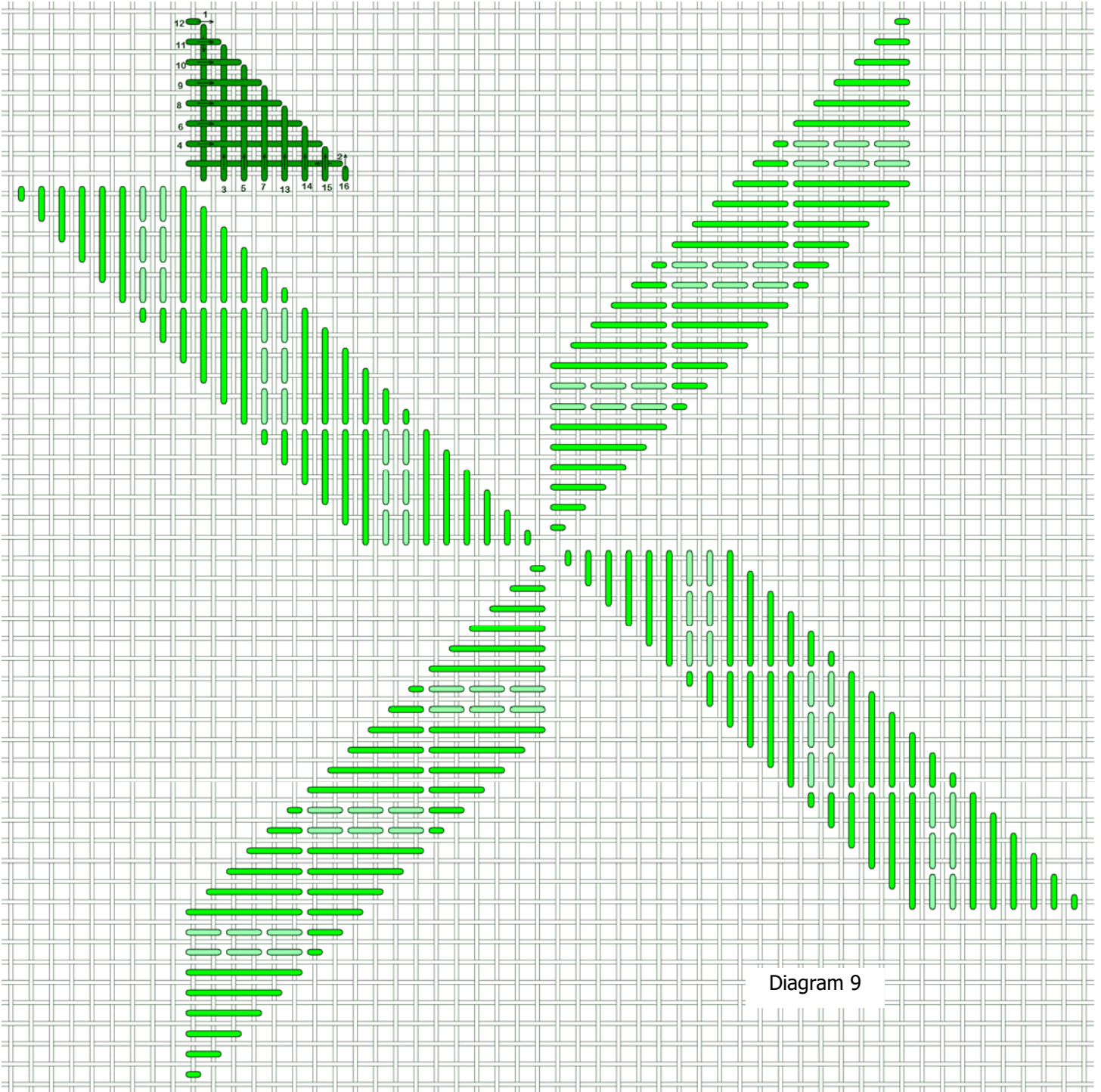
Stitches 13-16 cover the remaining straight stitches.

I anchored with a pin stitch, shaped like an "L", under the previous stitches. Gently move the threads of the sprat's head aside until you can see blank canvas, then make the "L" stitch, shown in Diagram 8. After completing the "L" stitch, snip the thread close to the canvas (either from the front or the back), then move the stitches of the sprat's head back in place.

The stitches are somewhat loose on the back and not a good place to weave into to end off the threads; a pin stitch is a better option.



Place the first sprat's where shown in relationship to the satin lozenges in Section 1.



Continue the first row or band as shown in the diagram.

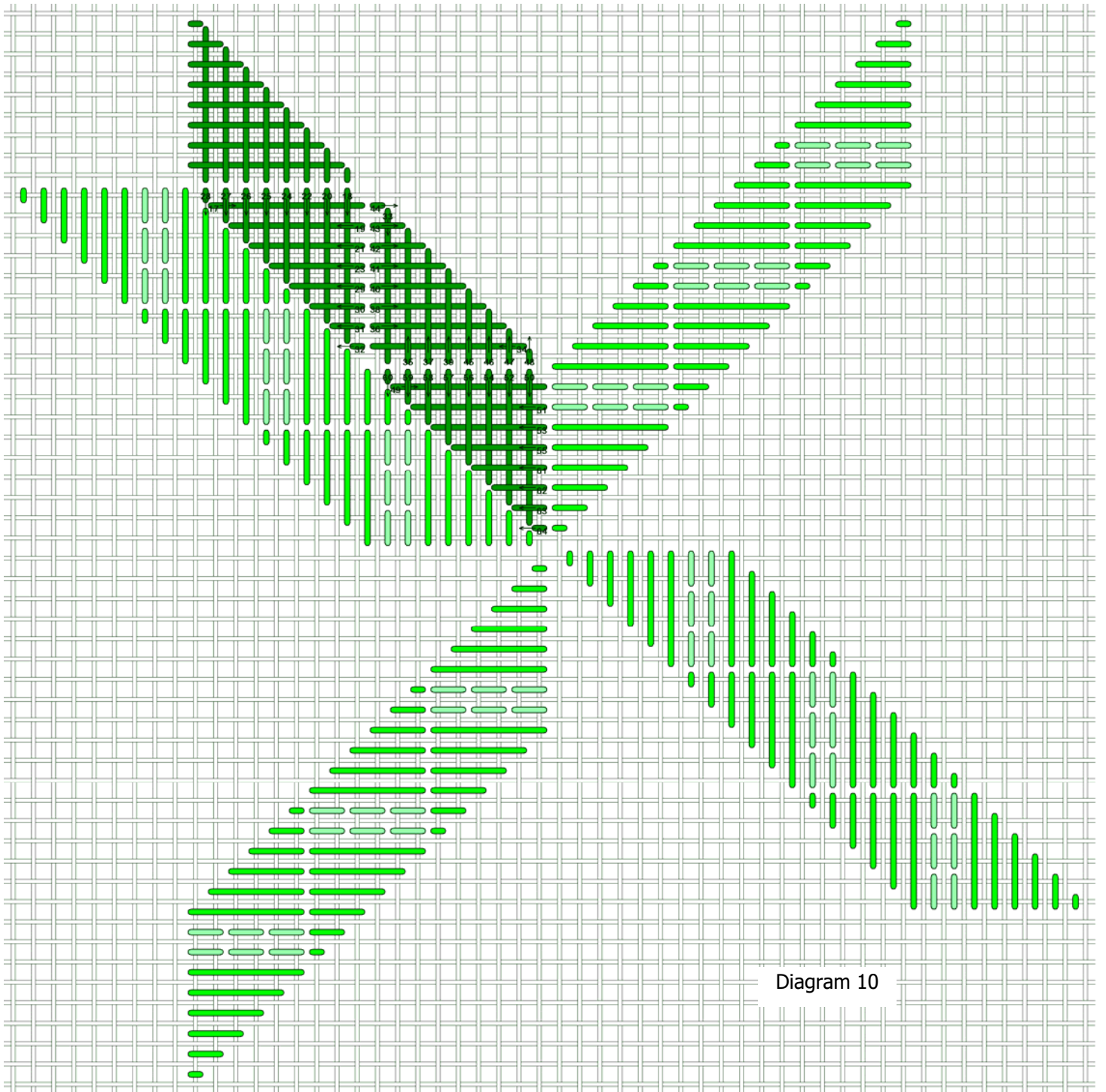


Diagram 10

Stitch the remaining sprat's heads as shown in Diagram 11. I did not indicate numbers or arrows since you should have a rhythm established after stitching the first row.

