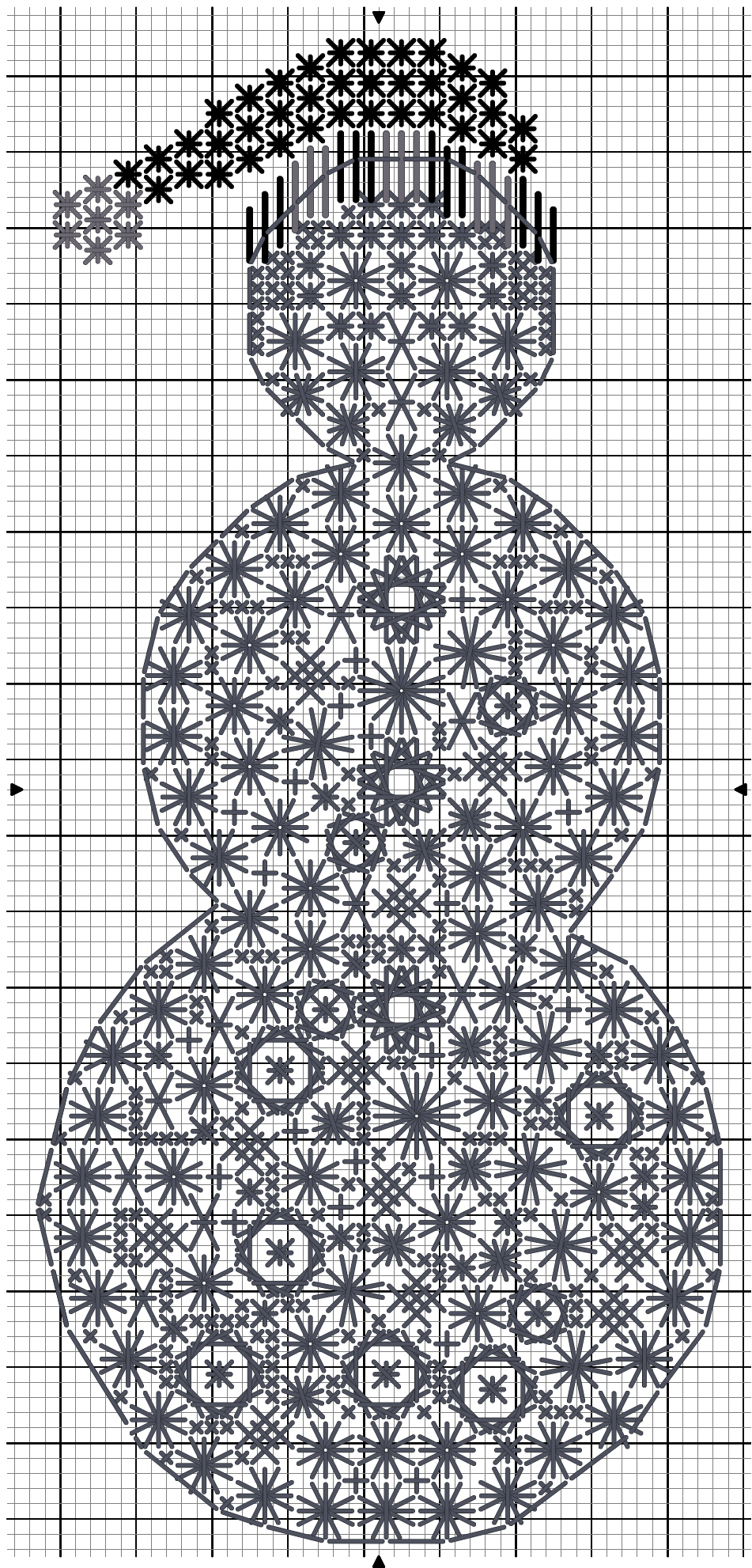


# DebBee's Designs



## *SPARKLY SNOWMAN ORNAMENT 2023*

©2023 Debbie Rowley for DebBee's Designs. All rights reserved.  
Design size 45 x 99 stitches, approximately 2 1/2" x 5 1/2" on 18 ct. canvas



# **SPARKLY SNOWMAN**

By Debbie Rowley

This is a free ornament chart for my subscribers and customers. Please don't copy or share, but refer to my website, [www.DebBeesDesigns.com](http://www.DebBeesDesigns.com), and your stitching friends can download their own chart.

## **Introduction**

Creating ornaments is my joy for the holidays! I'm so happy to share this with you. Even though it may look complicated, the ornament is composed of a few stitches, with charts for each stitch to take you through it.

Feel free to change the colors of the cap, or the snowman, to suit your own décor. The stitches go from the outline progressing to the smallest stitches. You may outline the snowman after the stitching is complete if you like. And, if you think it will be easier to stitch, I've included an outline graph so you can trace the outline on your canvas before stitching. I didn't stitch with an outline, just referred to the charts as I stitched.

The snowman is finished with hot fix crystals, because they're easy to apply after the stitching is complete. If you have a tool or iron, use that to activate the glue, or just glue them in place using a glue that dries clear, and apply with a toothpick. If you prefer, or if you don't have access to the hot fix crystals, use thread to make French knots in place of the crystals. You probably have some leftover black thread to use, the thicker the better! For the snowman arms, use straight stitches with one of the threads for the snowman.

I used several different threads and weights of threads, but if you want to reduce the number of threads you can. This ornament is for you to stitch and enjoy, so if you want to stash dive for white sparkly threads I encourage you to do that!

If you want to trace the outline before beginning to stitch, I recommend using a heat erasable pen. After stitching just iron it on the back, or use a blow dryer, to remove any stray marks.

I didn't outline the snowman after stitching, but if you want to outline it you may—just choose one of the threads, and outline with a back stitch or stem stitch after stitching.

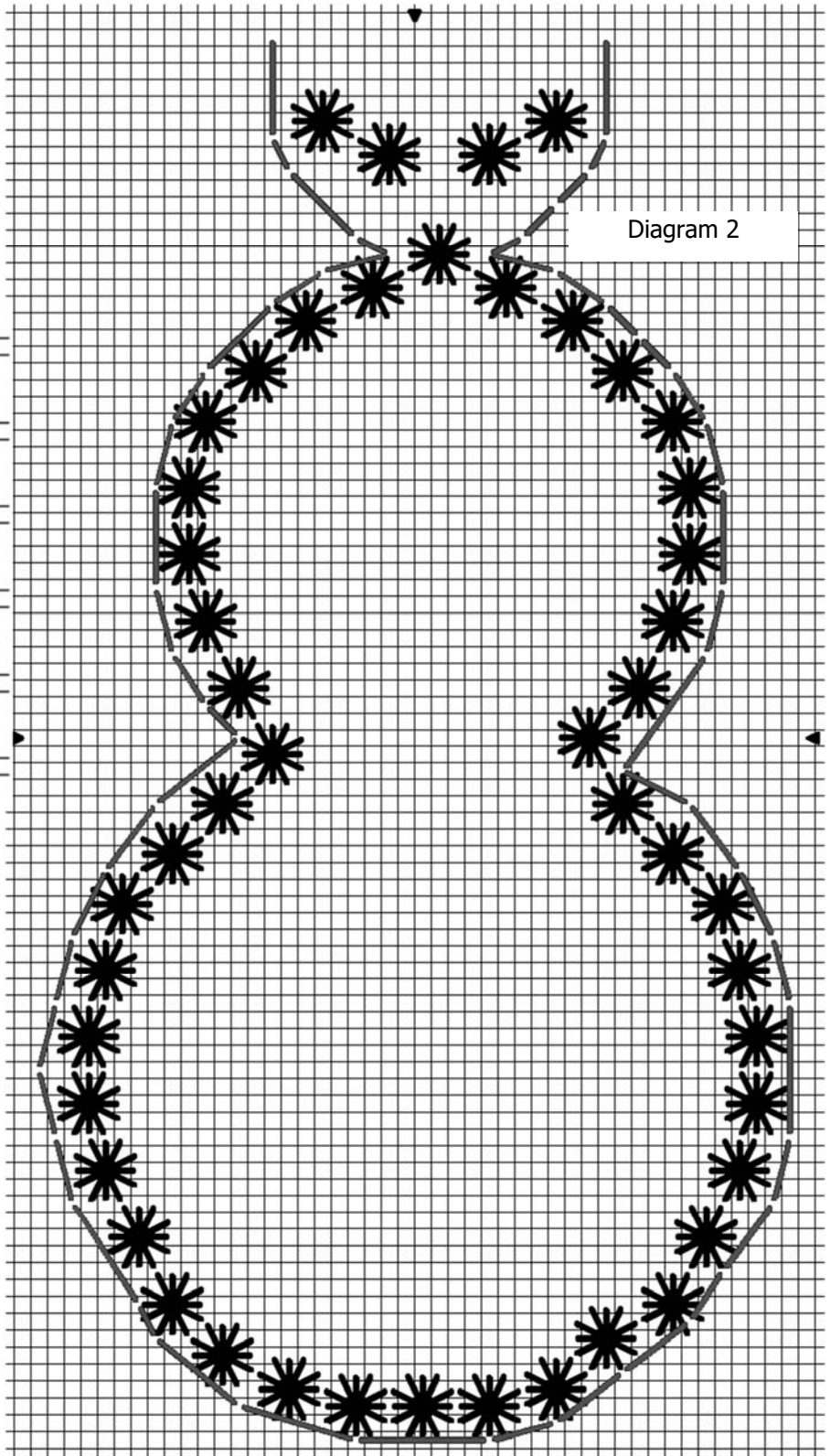
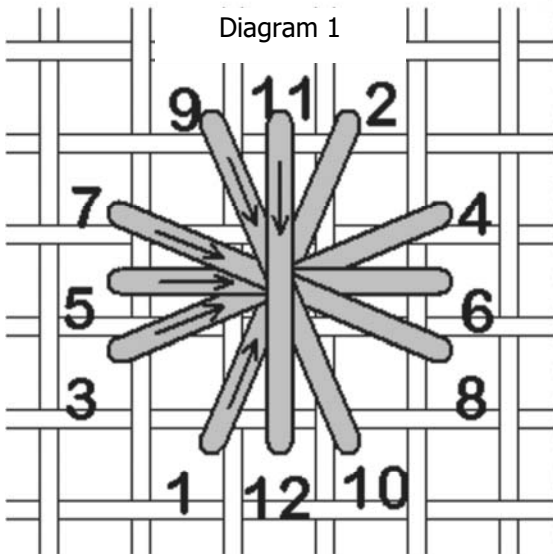
Instructions are on the next page. I show the stitch to use, the thread I used, and the placement graph for each different stitch.

## Outline - Round Rhodes

Round Rhodes over 4 canvas threads outline the entire perimeter of the snowman. I used Rainbow Gallery Silk Lame' Braid SL02 White for all of these stitches.

Stitch as shown in Diagram 1. The placement graph is Diagram 2.

Stitch all of the round Rhodes before moving to the next stitch. It's fine to carry the thread from one to the next. I anchored with pin stitches placed under the Rhodes to start, and wove through the backs of the stitches to end. Work with about 24"-36" at a time.

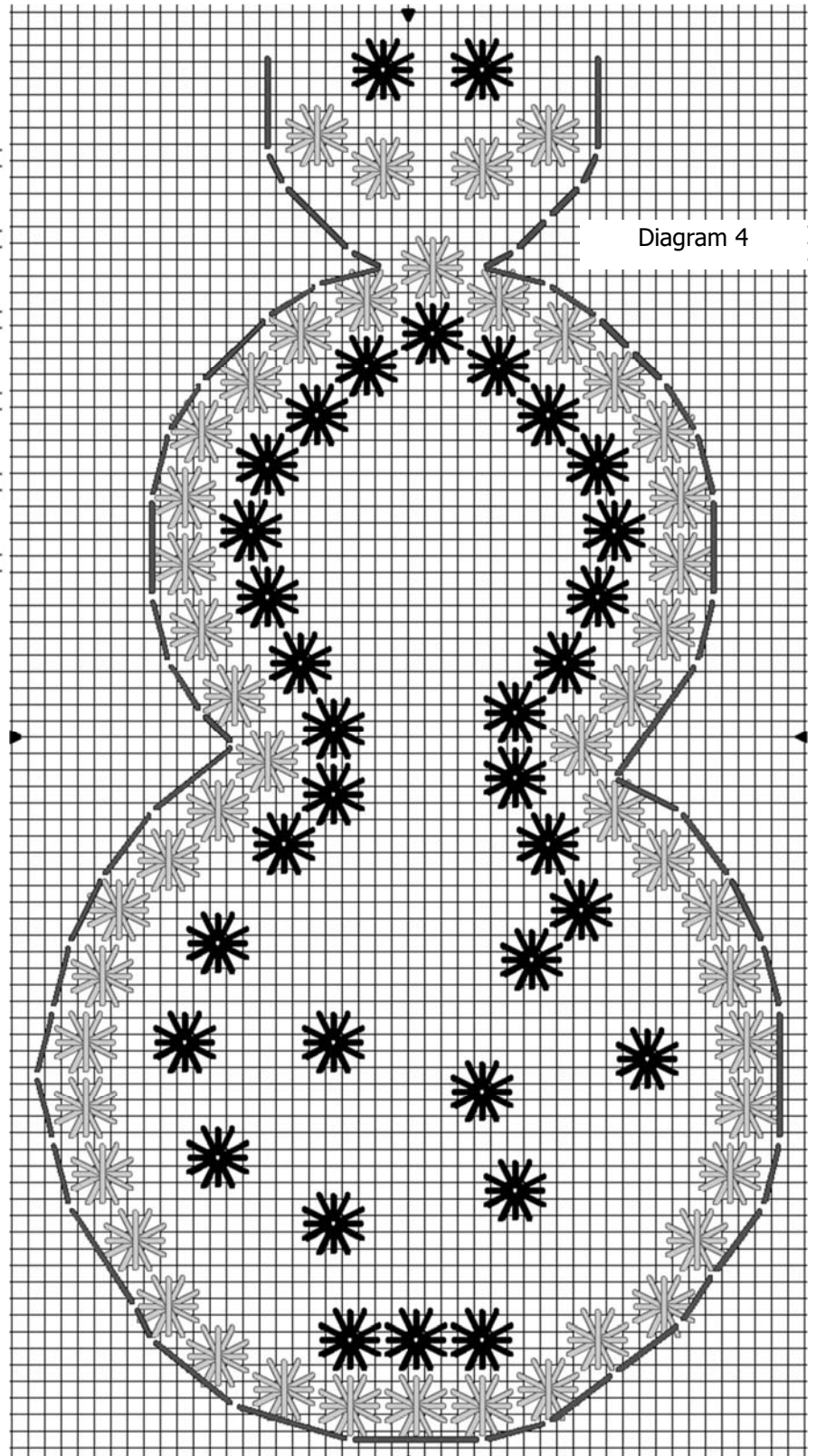
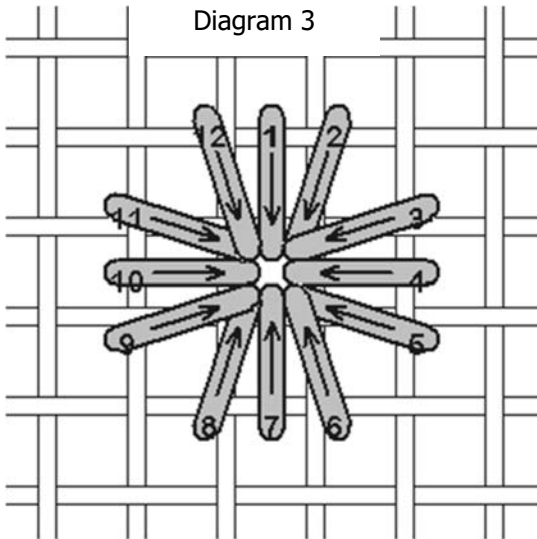




## Eyelets

I used Caron Collection Snow 00 White for the next stitches, eyelets over 4 canvas threads. Stitch as shown in Diagram 3, with placement in Diagram 4.

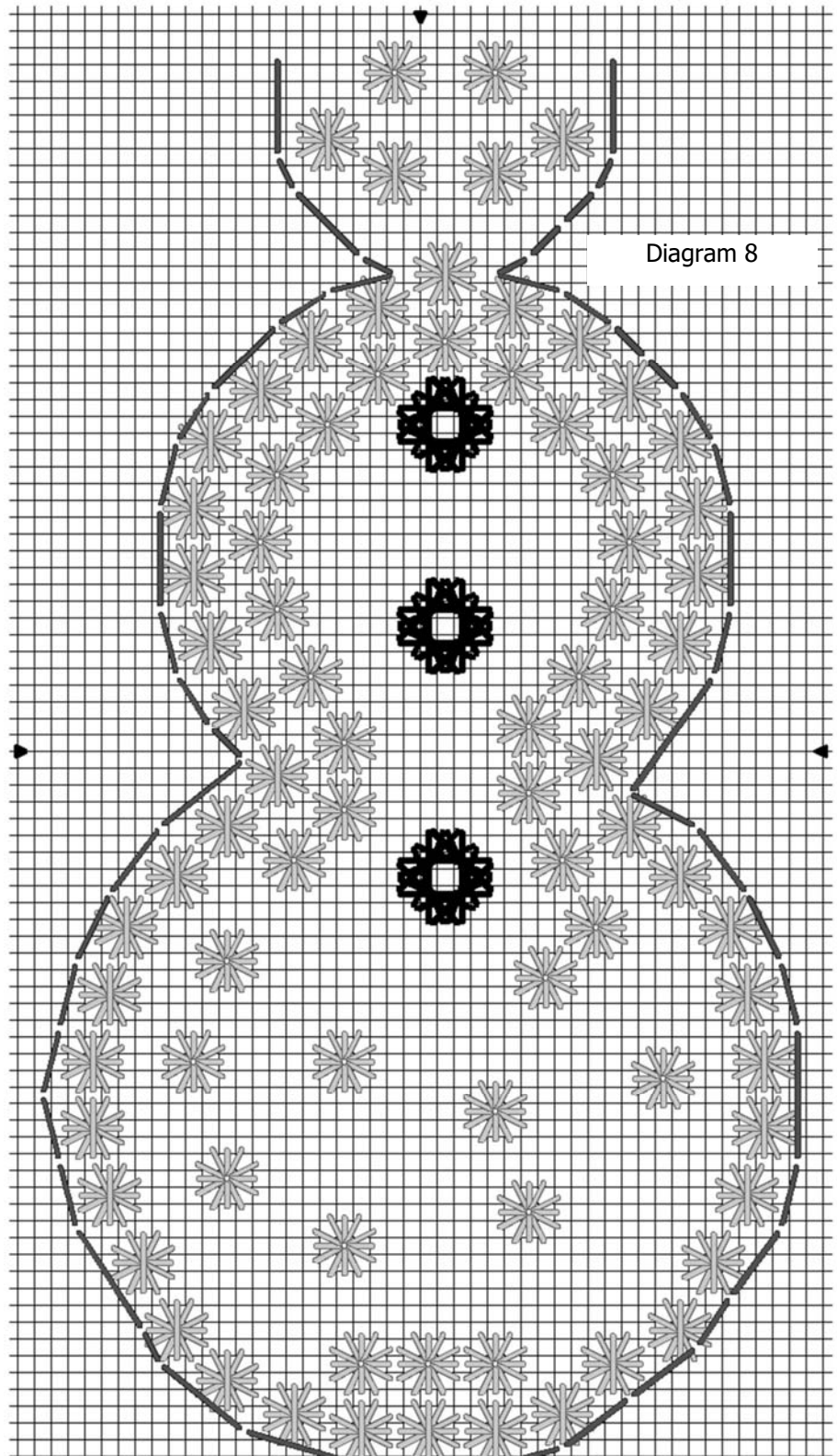
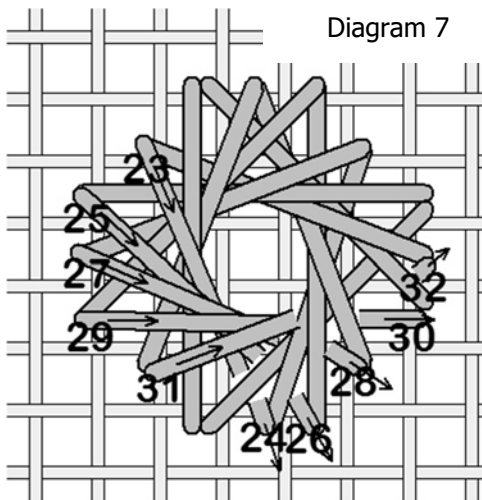
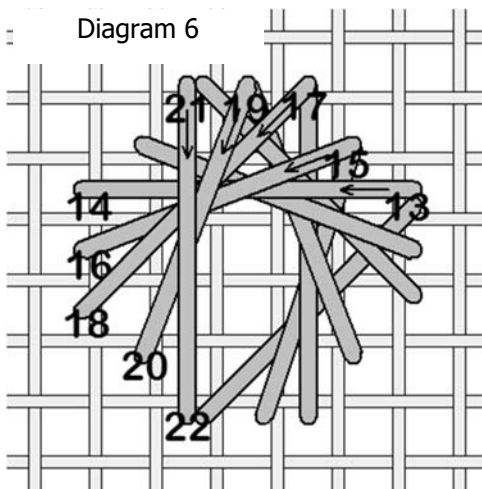
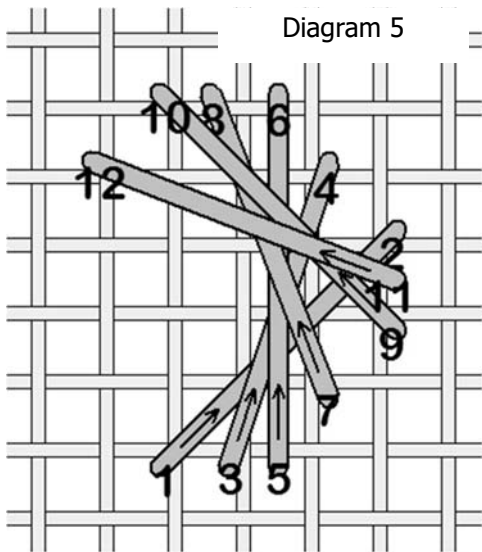
The Snow is a somewhat thick thread, and you may find it difficult to pull through the canvas (I did). Make sure you enlarge the center hole for the eyelets, and take the needle up and down as straight as you can. When pulling to open the center hole, pull when you bring the needle up to take a stitch, not down—this will open holes along the outside edges.



## Large Jessicas

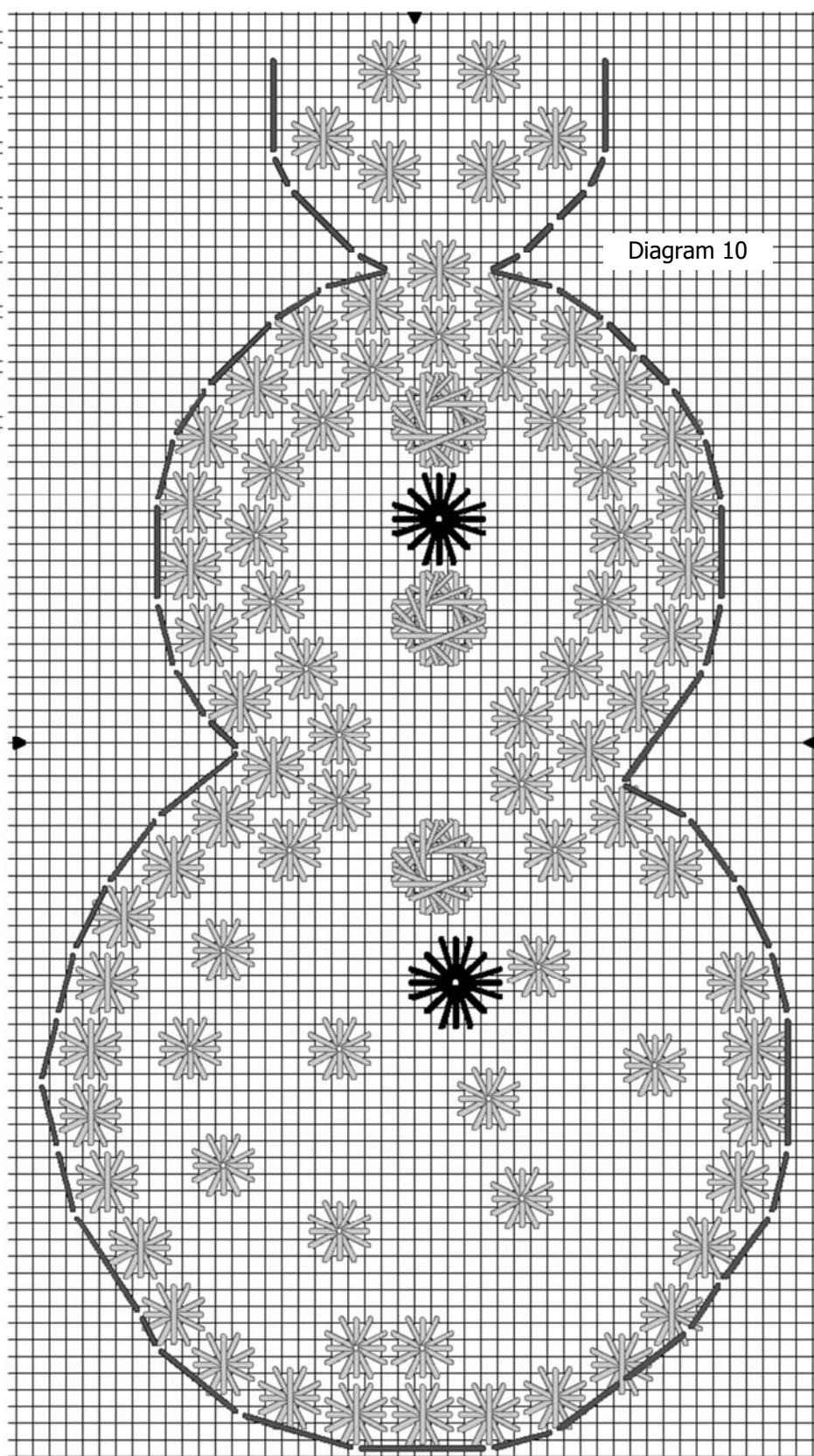
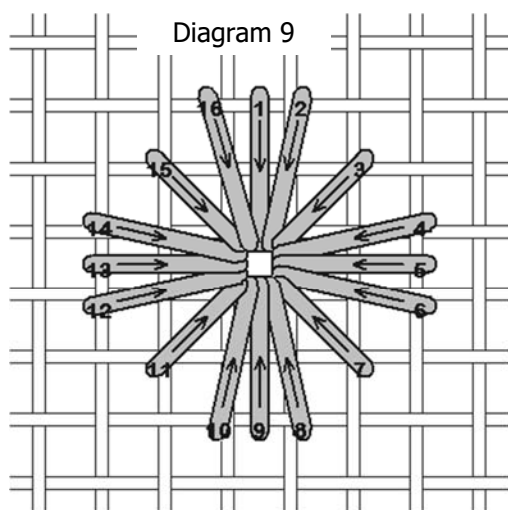
Use Rainbow Gallery Silk Lame' Braid SL81 Platinum for the large Jessicas. I suggest anchoring the thread with a pin stitch for extra security. Work with about 24"-36". If you find the Silk Lame' Braid too heavy, remove one or two strands from the braided thread to thin it a bit. End off by weaving into the back of the stitch. It's fine to carry the thread from one to the next.

The next three diagrams show the progression of the Jessica stitch. In Diagram 7, bring the needle over the stitches on the left, and slide between the canvas and the stitches on the right before ending.



## Large Eyelets

With the Rainbow Gallery Silk Lame' Braid SL81 Platinum, stitch a large eyelet where indicated. Anchor with pin stitches if you like, and end off by weaving into the backs of the stitches. It's ok to carry the thread from one to the next.



## Large Open Jessicas

The large open Jessicas are similar to the smaller Jessicas—the last stitches come over the left side, and slide under the stitches on the right side before ending. Use the Rainbow Gallery Silk Lame' Braid SL02 White, taking care when sliding the needle under the stitches not to split the braided thread. You can carry the thread from one to the next.

Diagram 11

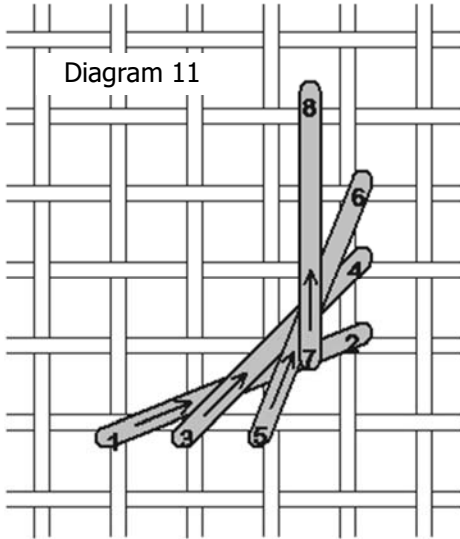


Diagram 12

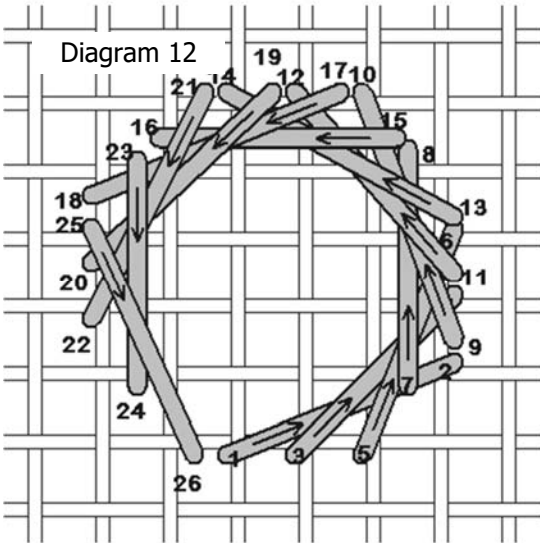


Diagram 13

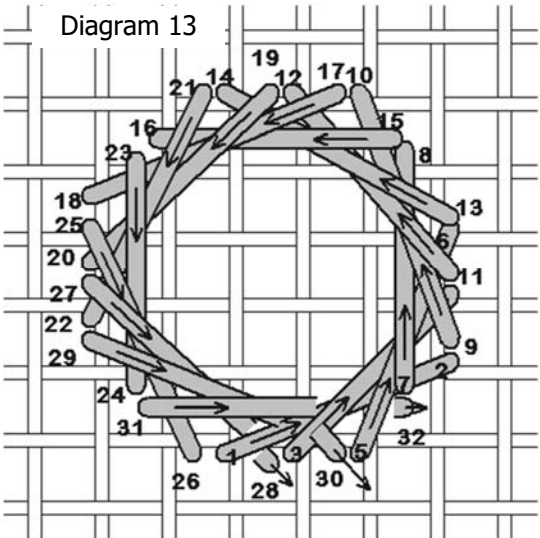
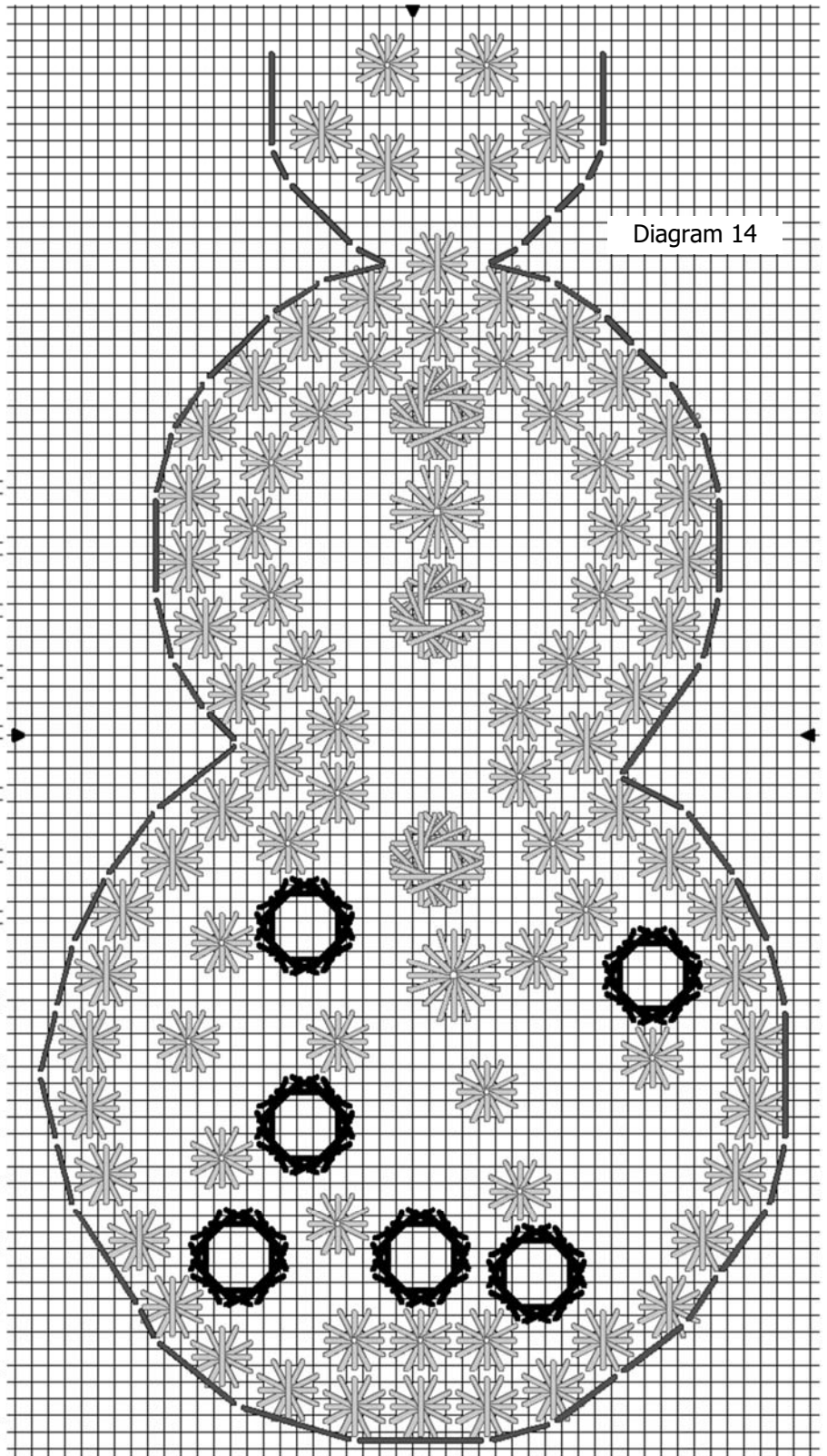


Diagram 14





## Small Open Jessicas

The small open Jessicas are just like the large open Jessicas only smaller. Use the ThreadworX 71124 Ice Age; this is a slightly variegated #8 metallic braid.

Diagram 15

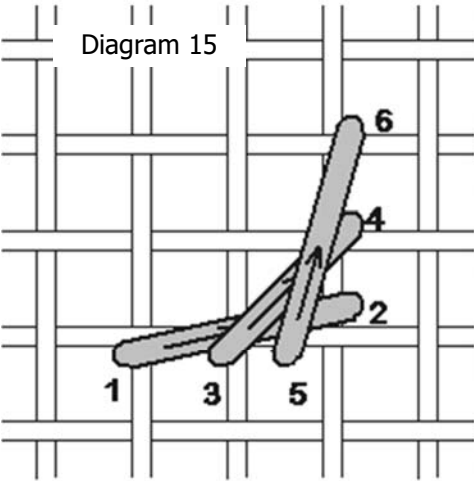


Diagram 16

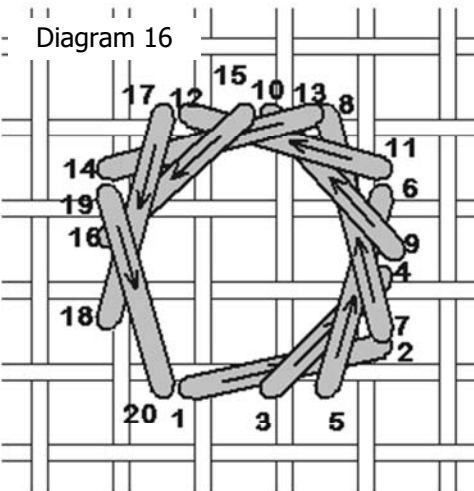


Diagram 17

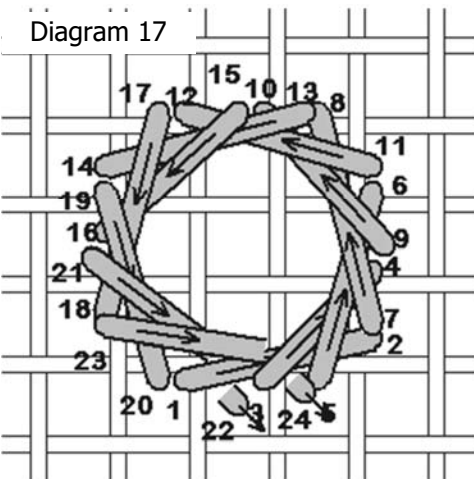
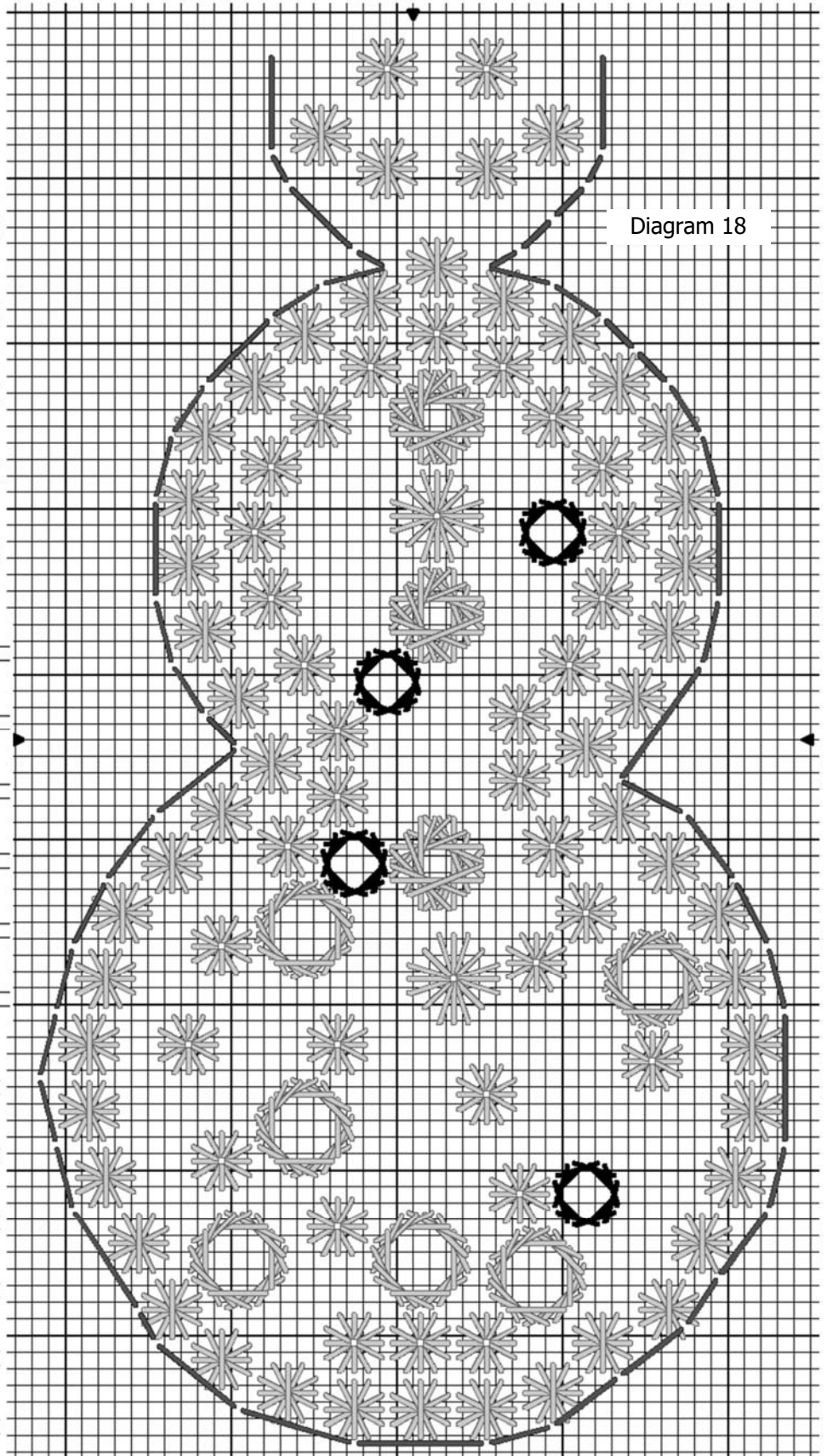
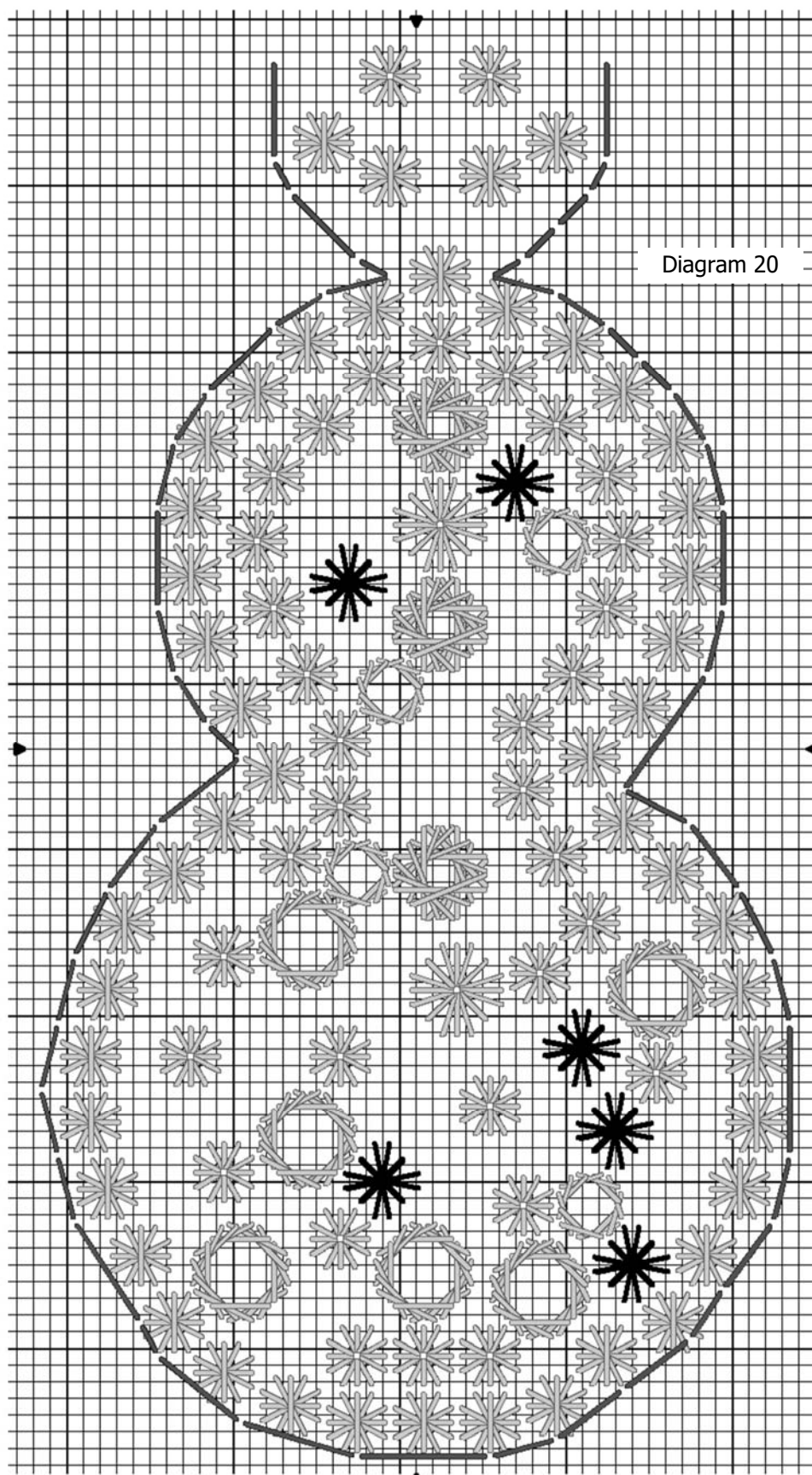
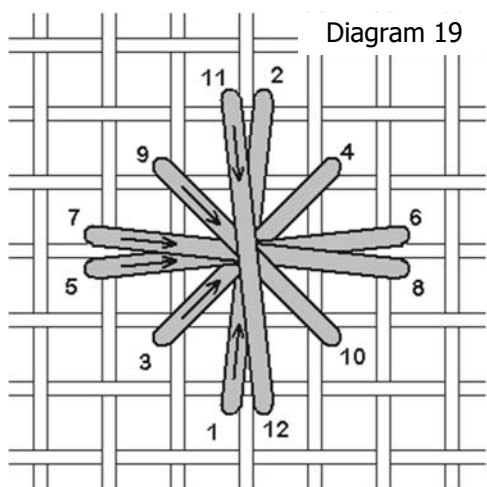


Diagram 18



## 5 x 5 Rhodes Stitches

Use Rainbow Gallery Entice E202 White for these stitches, Rhodes stitches over 5 canvas threads. Stitch as shown in Diagram 19, with placement in Diagram 20.



## Small Herringbone Squares

I used Rainbow Gallery Silk Lane' Braid SL02 White for the small herringbone squares. Stitch as shown in Diagrams 20-21, with placement in Diagram 22. The last stitch of the small herringbone square slides under the first stitch of the round before ending, a little tricky to do with this loosely braided thread, but the end result is prettier.

Diagram 21—step 1

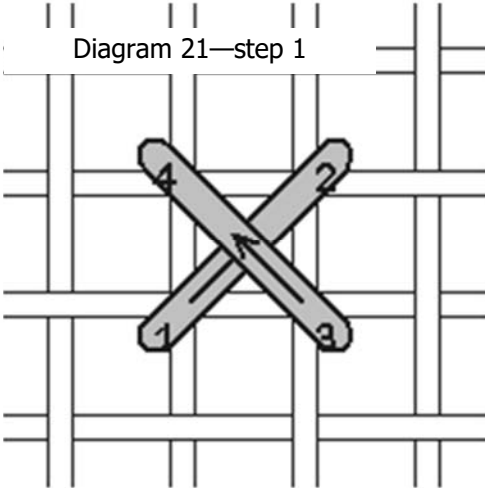


Diagram 22—step 2

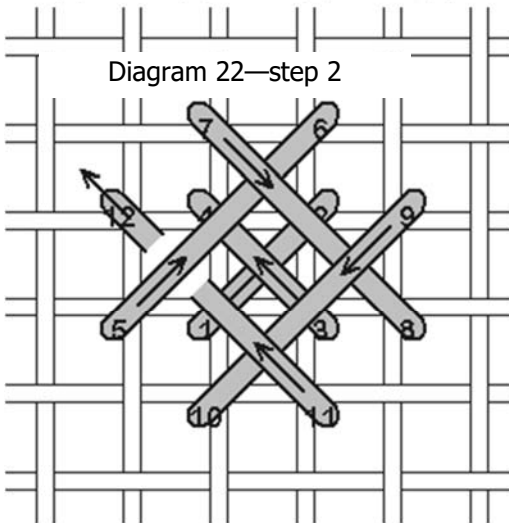
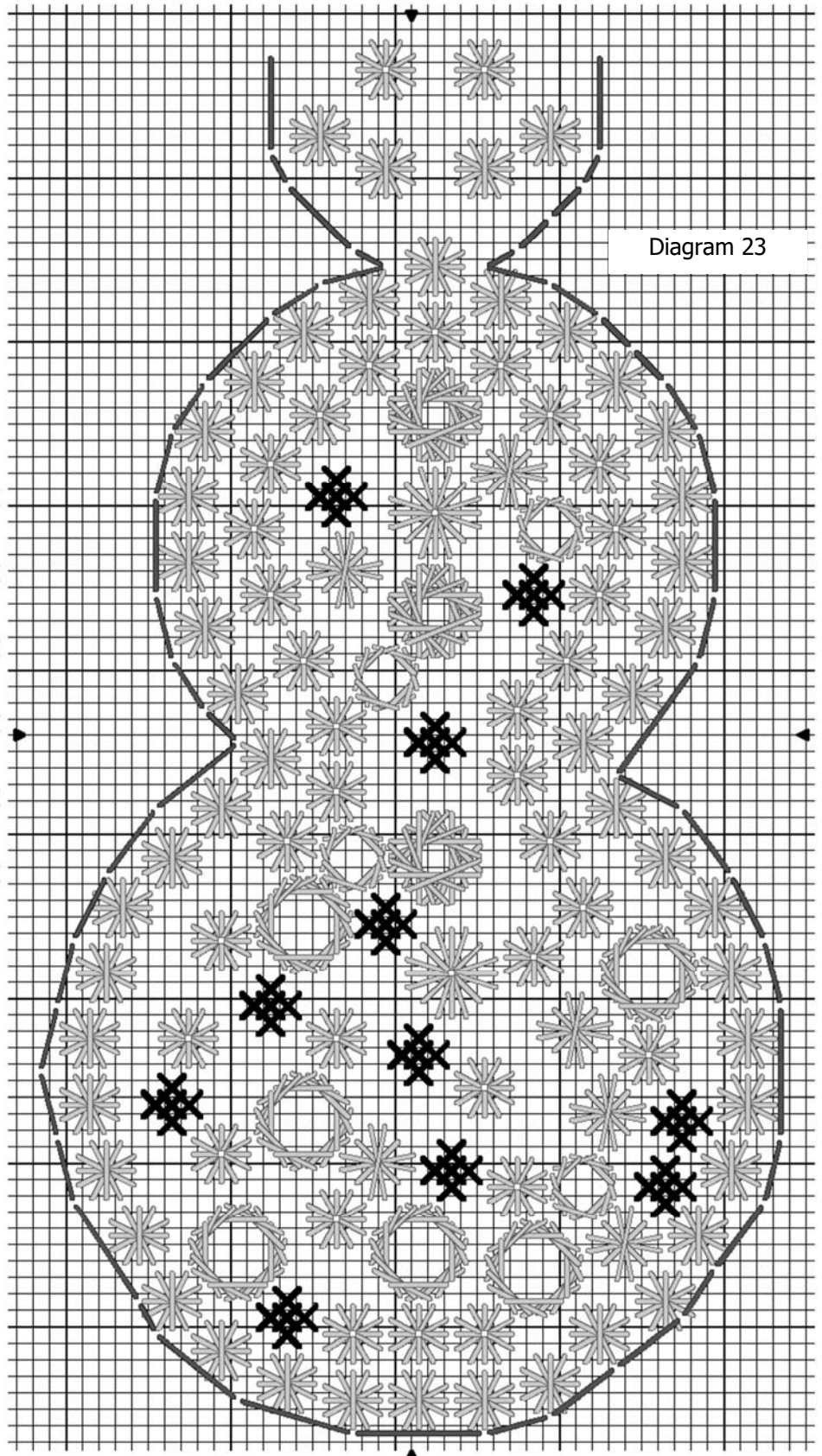
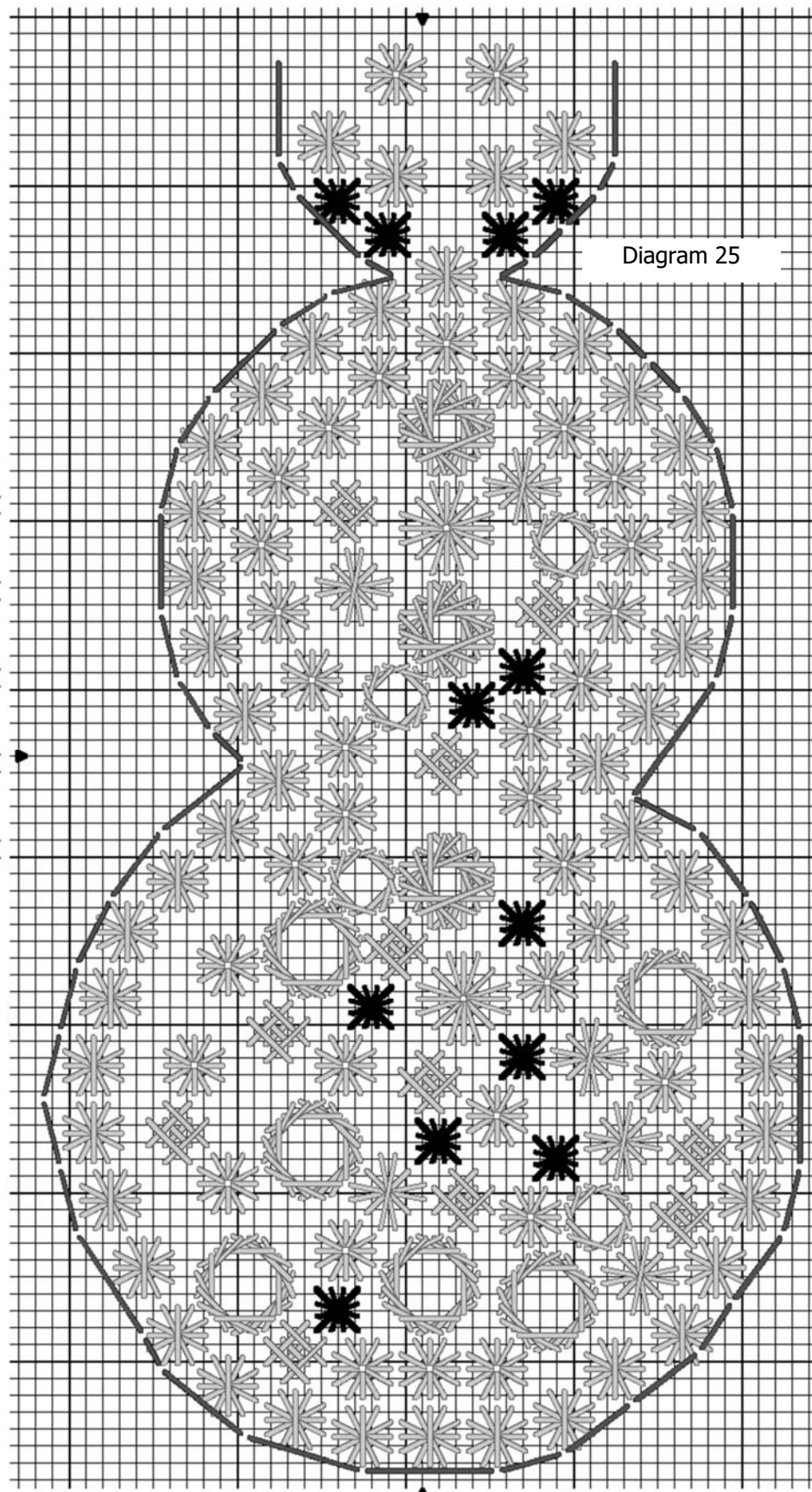
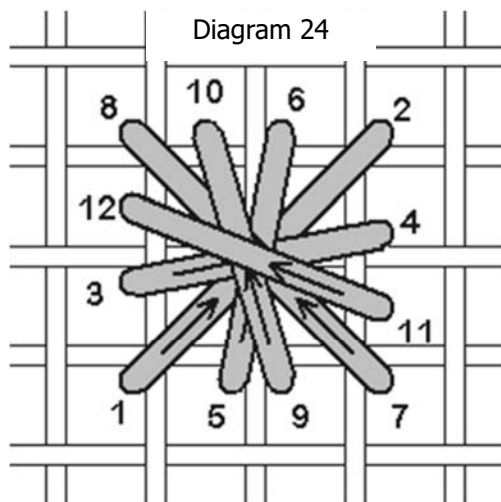


Diagram 23



### Leviathan 3 x 3

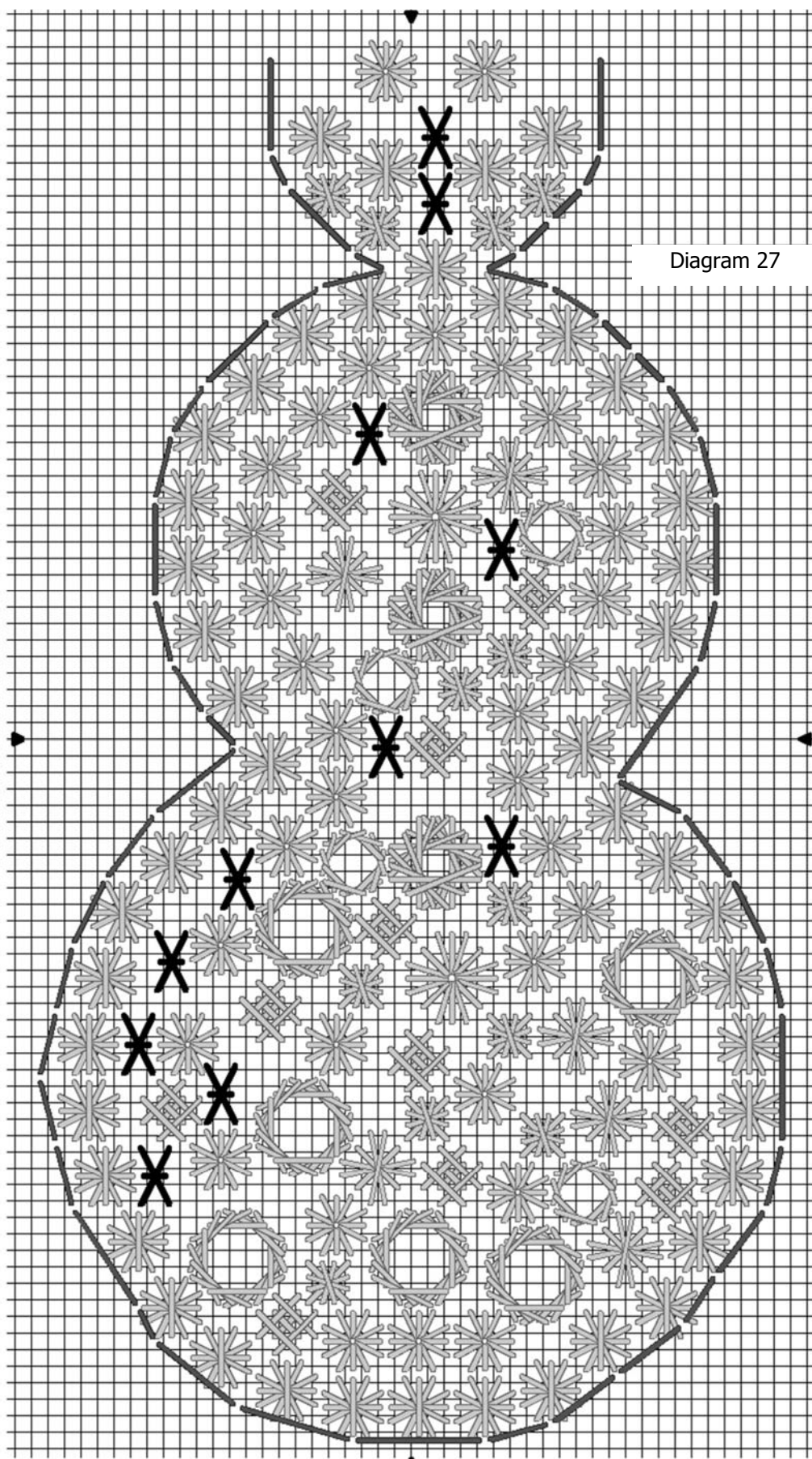
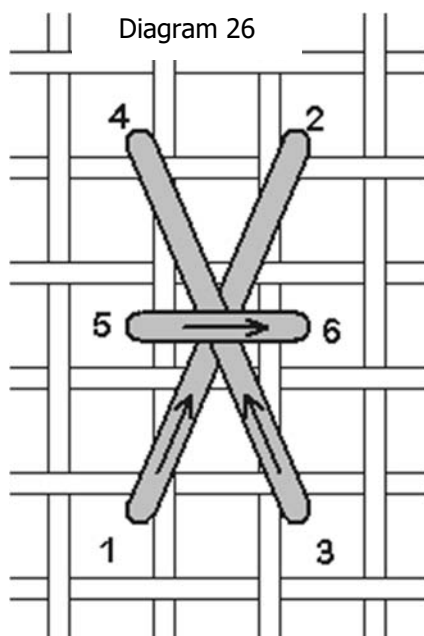
These small leviathan stitches begin to fill some of the spaces in the snowman. Stitch as shown in Diagram 24, with placement in Diagram 25, using ThreadworX 71124 Ice Age.





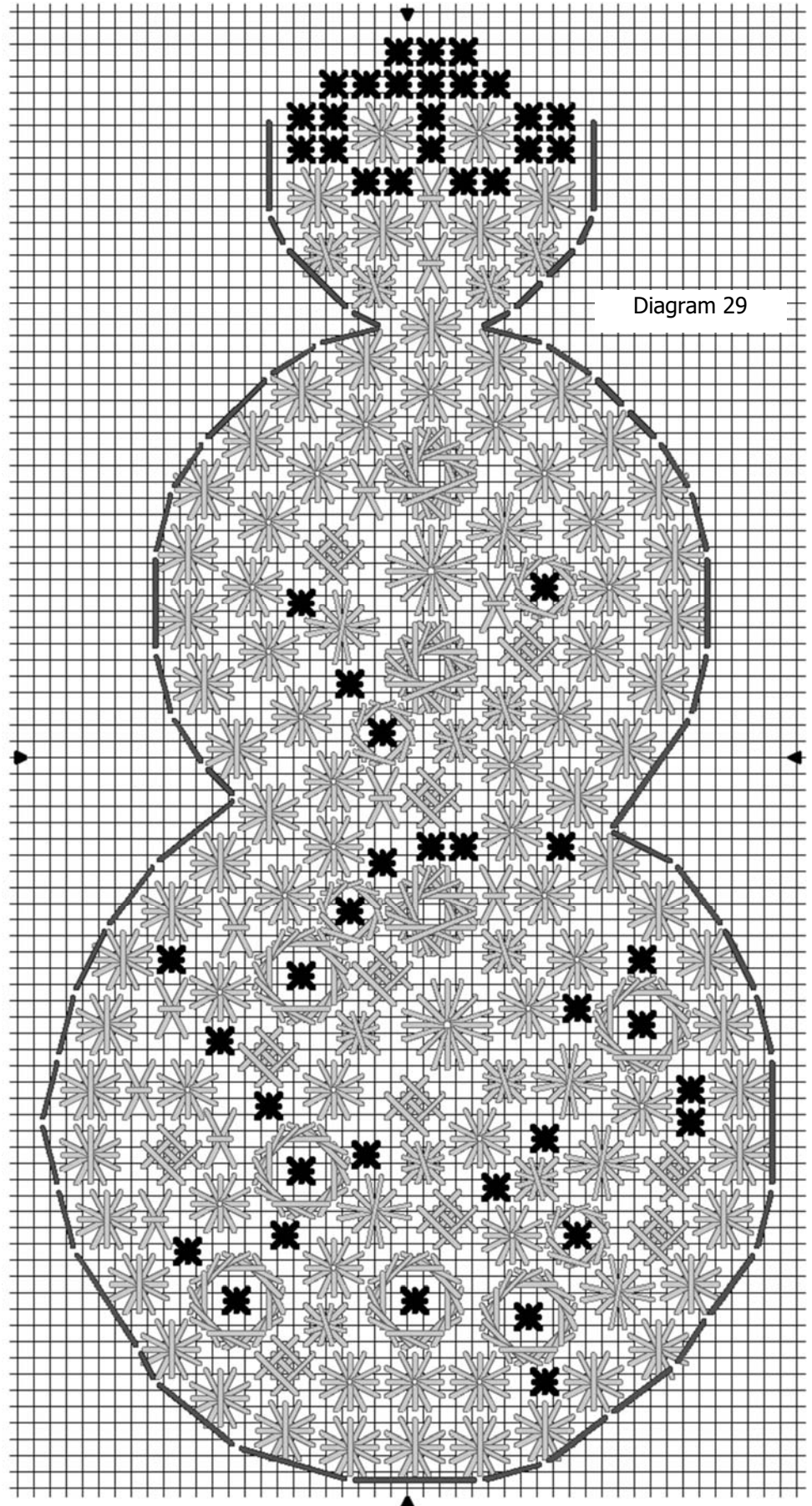
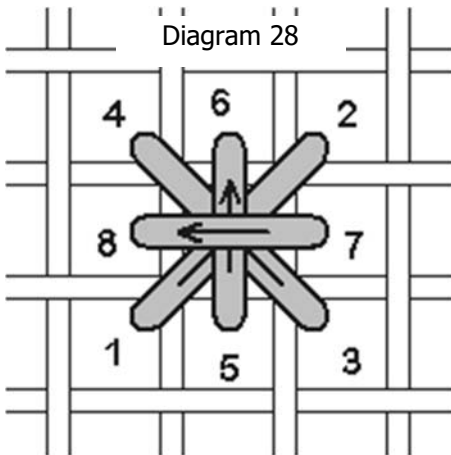
## Tied Oblong Cross Stitches

For the tied oblong cross stitches, use Caron Collection Snow 00 White, and stitch as shown in the diagram.



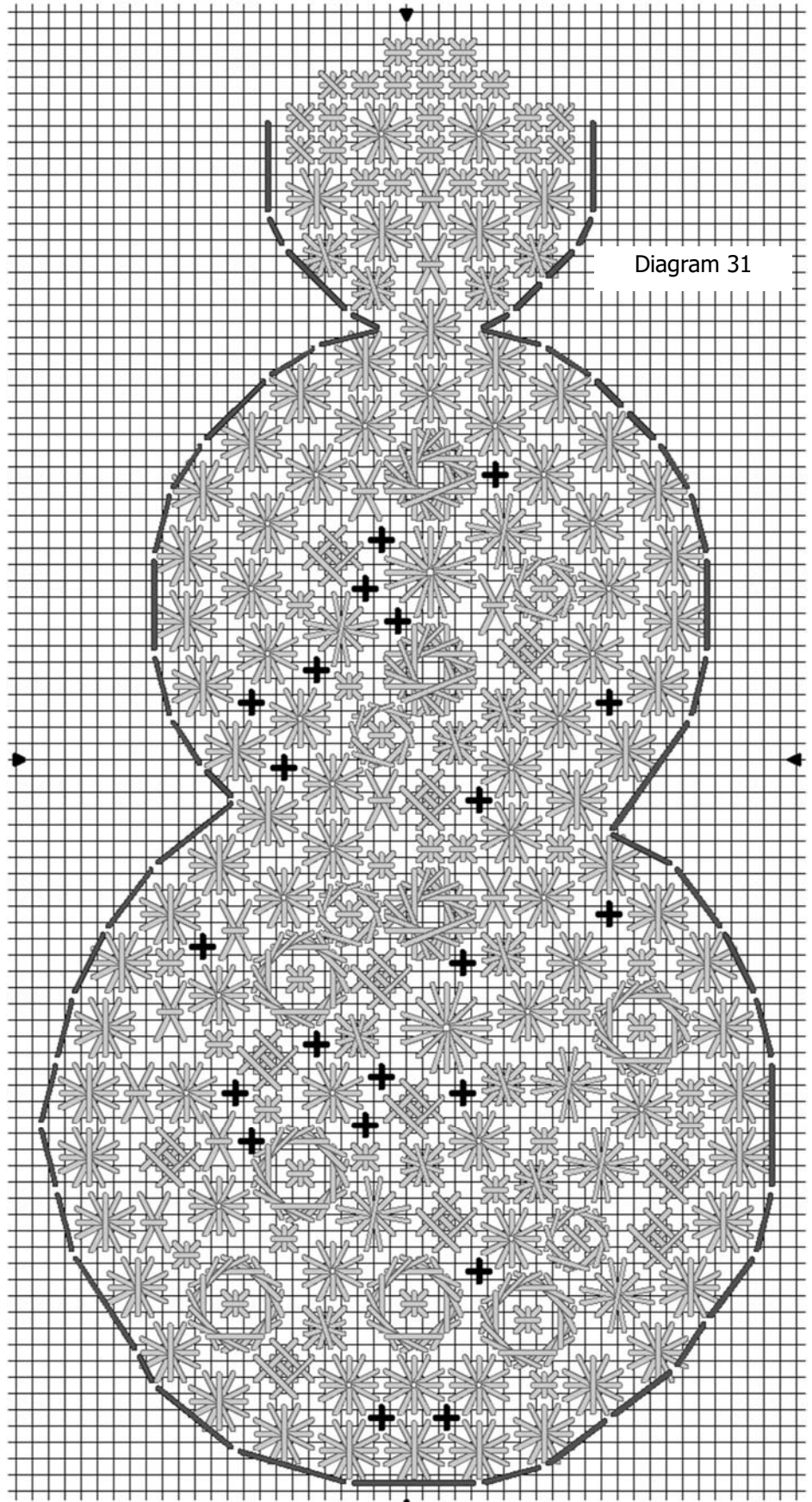
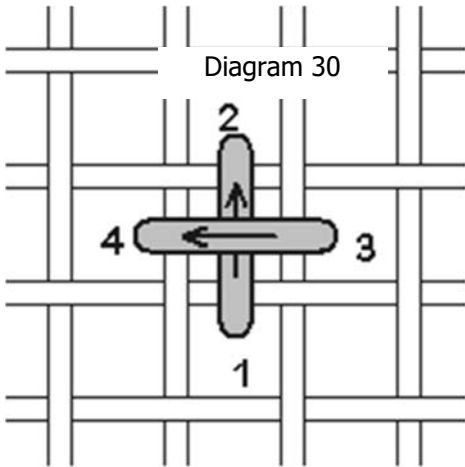
## Smyrna Crosses

Stitch Smyrna crosses with Rainbow Gallery Entice E202 White.



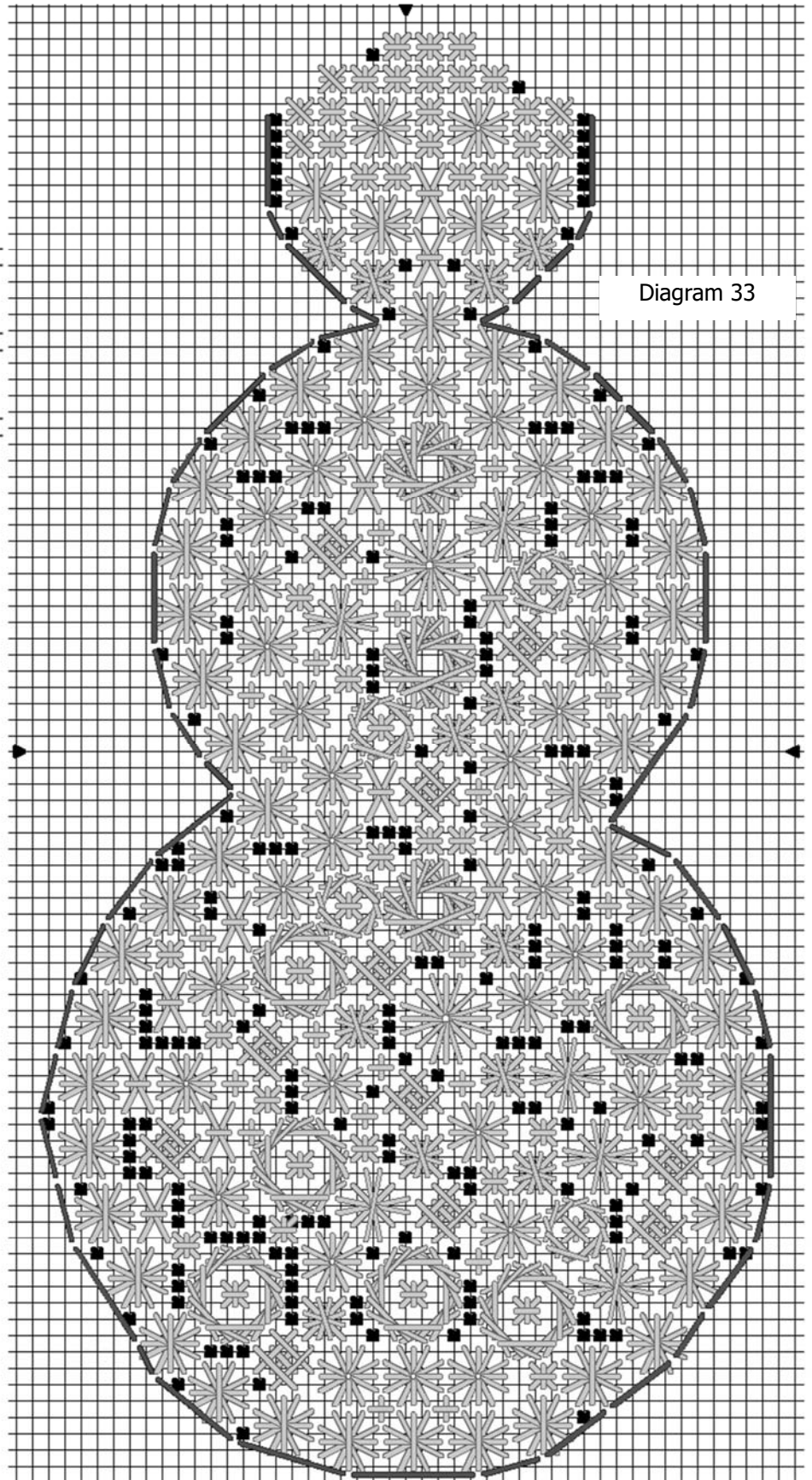
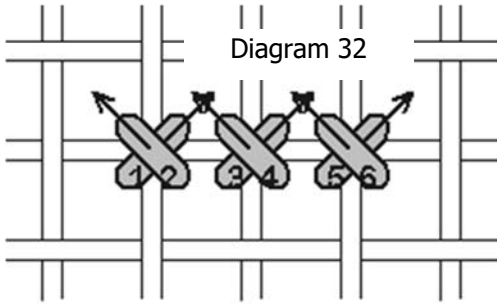
## Upright Cross Stitches

Stitch upright crosses, making sure the final stitch is the same for all of them (can be horizontal or vertical, whichever makes most sense to you, but the same for all of them). Use ThreadworX 71124 Ice Age.



## Small Cross Stitches

The last filling stitch is small cross stitches over a single intersection, using ThreadworX 71124 Ice Age. You may put more small cross stitches if you think they're needed. It's fine to carry the thread from one to the next, since the snowman should be pretty solid by now.

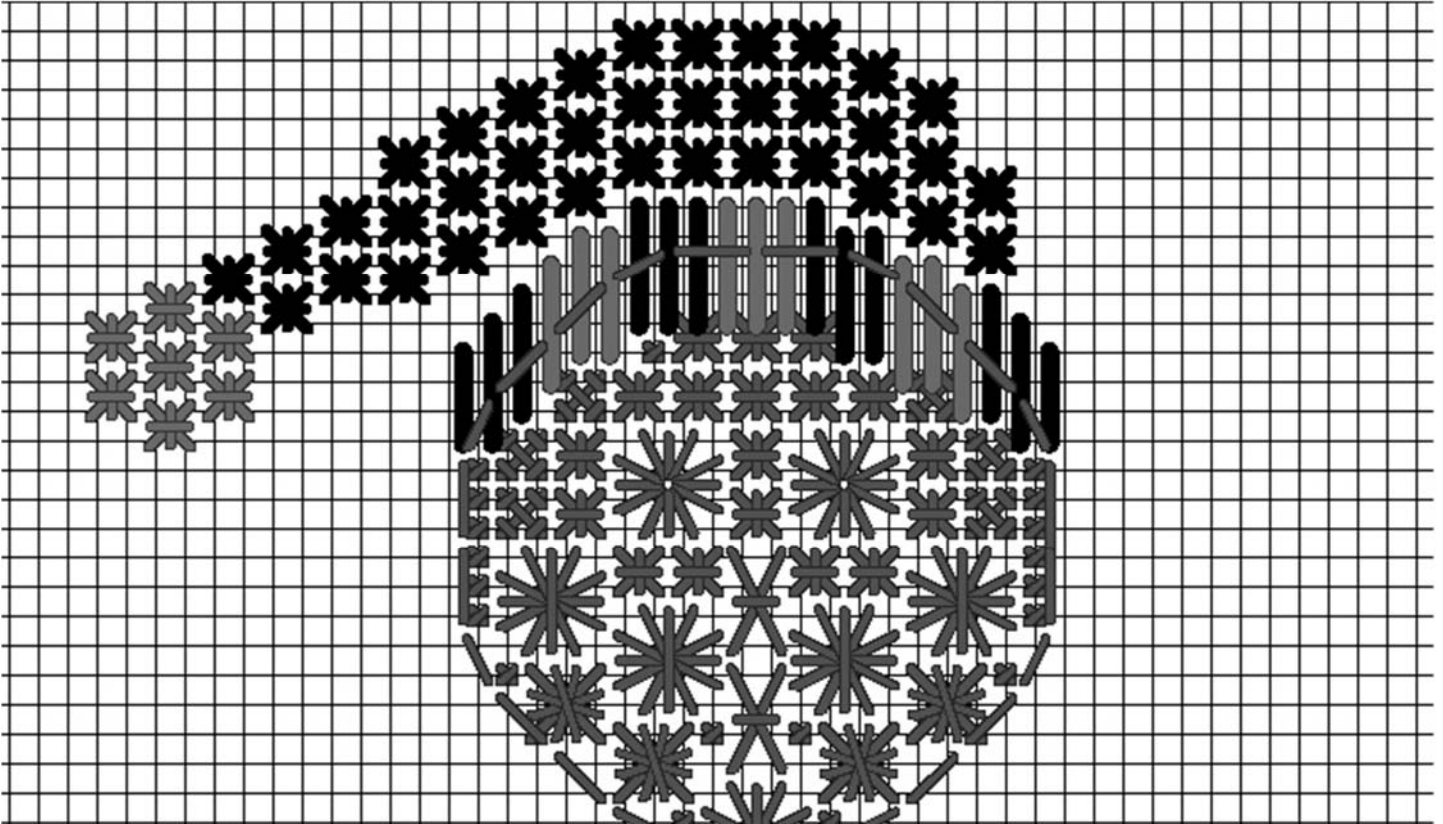




## Snowman Hat and Scarf

It's time to dress up our snowman! I chose pale ice colors, but you may opt for brighter colors if you like. You may use one color, or two or three, but I used two, Presencia 2687 Light Lavender and Presencia 4379 Light Nile Green. I used 6 strands for the satin stitches—separate and recombine, don't use directly from the skein, and 3 strands for the Smyrna crosses. Remember that this is supposed to be bulky, like a knit cap.

Stitch the satin stitches first, using either color first, then the Smyrna crosses.



The satin stitches overlap the other stitches a little, to make it look like the hat is sitting on his head securely. I alternated colors for the hat band, the used one color for the body of the hat and the other color for the pom pom. If you like you can make a pom pom to attach!

If you want to outline the snowman, use any of the threads to do so. If you outline the head, make sure the outline stitches are under the hat band.

After stitching, it's time to attach the snowman's arms and "coal". For the coal, I used hot fix crystals, black size ss16 for the eyes and buttons, and black size ss12 for the nose and mouth.

If you prefer not to use the crystals, use any black sparkly thread you have in your stash, and make French knots. If you want to use the crystals, but don't have the hot fix tool, use the tip of an iron to activate the glue, or just glue them in place using a craft or fabric glue that dries clear.

For the arms, use any of the sparkly threads to stitch the branches in place, or leftover brown or black threads. Make long straight stitches for the long length of the branches, as thick as you'd like, then make the small branches from the longer length. After laying in the long straight stitches, lightly couch over them to make sure they stay in place.

## **Finishing Instructions**

For the flat ornament finish:

Cut 2 pieces of mounting board or stiff cardboard 4" x 7" each.

If you are using a dark canvas, cut a solid piece of construction paper or fabric that matches the canvas color, 6" x 9", and a piece of fabric for the back of the ornament, 6" x 9".

Cover one piece of mounting board with the solid fabric, and the other piece with the ornament backing fabric:

Lay the fabric for the back wrong side up. Lightly spray with spray glue, or use craft glue if you don't have spray glue. Center one piece of mat board on the wrong side of the fabric. Miter in the corners, and fold the fabric edges over, enclosing the edges of the mat board. Set aside to dry.

### **Prepare the ornament front:**

Trim away excess canvas to about 1" from the design all the way around. Place face down, then lay the front mounting board on the ornament, face down (you want the colored side to be under the ornament so the white board doesn't show through). Fold in the corners to miter, reducing the bulk by carefully trimming away, but don't trim too much or cut into the design. Leave enough at the corners to fold over the corner of the mounting board.

Glue the sides of the canvas to the back of the mat board. Let the glue dry before moving to the next step.

### **Put the front and back together:**

Glue the wrong sides of the front and back, then put them together. I use clothes pins to hold the front and back together until it dries, or at least sets. You can also put the ornament face down on a towel, then put something heavy on it to make sure the front and back adhere together.

### **Apply cording:**

Cording finishes the edges of the ornament to give it a nice look, and provide a way to hang the ornament. I used purchased cording from the holiday section of the craft store.

There are different ways to apply the cording, but this is how I did it for this ornament. Cut a length of cording, enough to cover all four sides with about 8" extra, fold it in half to find the center, then start from the bottom center of the ornament. Apply glue thinly to the edges of the ornament and glue the cording in place. I used straight pins to make sure the corners stay in place, pushing them in between the pieces of mounting board; these stay in place for the finished ornament. You can also use pins along the sides if you like.

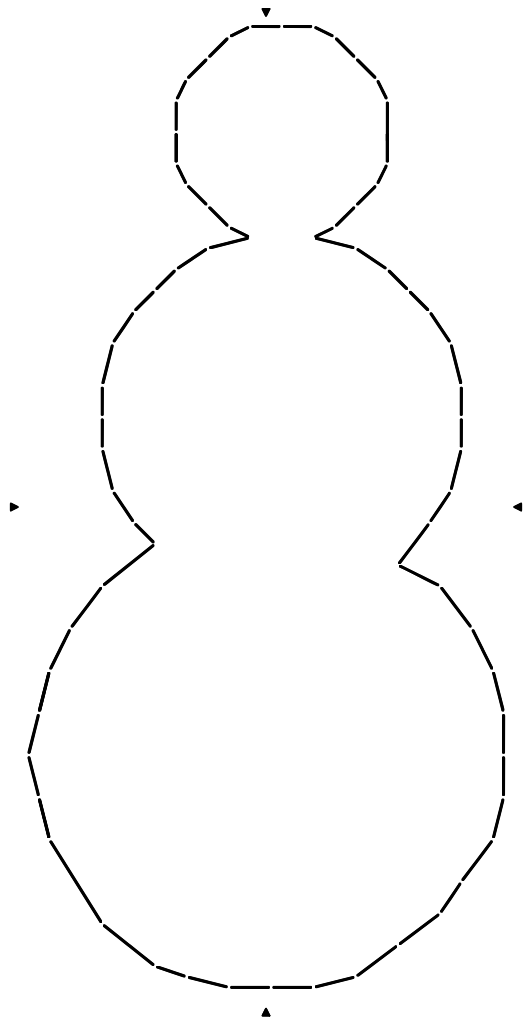
At the top apply cording to the center from each side, using pins to make sure the cord adheres well, then use the excess cording to make a loop hanger by tying a knot.

You can use a different method if you like, and a different finishing method, but this is how I finish all my ornaments.

I hope you enjoy this little snowman ornament! Have fun stitching it, and thanks for your continued support of DebBee's Designs!

Debbie@DebBeesDesigns.com

[www.DebBeesDesigns.com](http://www.DebBeesDesigns.com)



# SPARKLY SNOWMAN ORNAMENT 2023

## Caron Collection

Snow 00 White

## Presencia Cotton Floss

2679 Light Lavender

4379 Lite Nile Green

## Rainbow Gallery

Entice E202 Snow White

Silk Lame' Braid SL02 White

Silk Lame' Braid SL81 Platinum

## ThreadworX #8 Braid

71124 Ice Age

Fire Mountain Hot Fix Crystals

Black ss16 (5)

Black ss12 (6)

### *Other materials needed:*

Zweigart 18 ct. Antique Blue mono canvas, 10" x 8"

1 pair each of 10" and 8" stretcher bars

22 tapestry needle

Laying tool

## About DebBee's Designs

Everyone loves a snowman! I hope you enjoy stitching this sparkly snowman with loads of sparkly threads, finished with a hat, arms and crystals!

This design looks complex, but when broken into steps it goes pretty quickly. The instructions are written to focus on one stitch at a time before proceeding to the next stitch.

If you want to change the colors of the cap, use French knots instead of crystals or otherwise personalize this snowman feel free!

I hope you enjoy this gift to you, to thank you for being supportive of DebBee's Designs. I appreciate you more than you know! Best wishes for the happiest of holidays!

Debbie Rowley  
debbie@DebBeesDesigns.com  
www.DebBeesDesigns.com



[www.facebook.com/DebBeesDesigns](https://www.facebook.com/DebBeesDesigns).

